

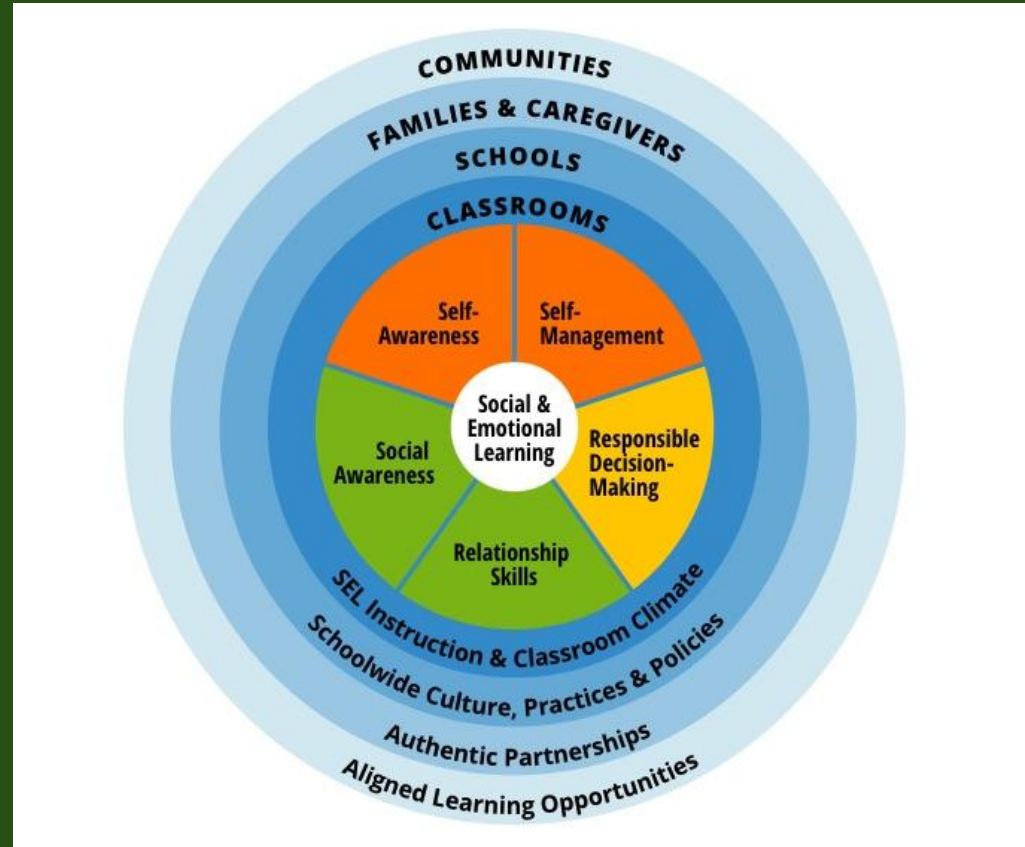
SEL - Social and Emotional Learning

School Committee Update
March 9, 2023

Framework for Social Emotional Learning (SEL)

SEL is the process through which all young people and adults acquire and apply the knowledge, skills, and attitudes to:

- Develop healthy identities
- Manage emotions and achieve personal and collective goals
- Feel and show empathy for others
- Establish and maintain supportive relationships
- Make responsible and caring decisions



SEL/Advisory Teams

ELEMENTARY SEL COMMITTEE/PILOT TEACHERS		MIDDLE SCHOOL ADVISORY LEADS
Amber Crowley Mary Comer Kerry Demone Claire Dorman Tiffany Dunn Stephanie Feuer-Beck Sam Gross Beth Kelly Jill Luskin	Erin Mann Nancy Malatesta Mary McGuire Jessica Miller Yara Nassif Stephanie Traugott Cassie Waldner Sarah Waterman Jeremy Wolfe	Tara Goodwin Joe Lawlor Holly Palmer Debi Peterson Krissy Wambolt

SEL Practices and Resources Currently Under Revision and Replacement

- **Open Circle** - Open Circle was one of the first programs to support the field of SEL and has been the go to curriculum in Westwood for many years. In June 2021, Open Circle discontinued its curriculum and professional development training. Westwood is in the process of selecting a replacement program as we transition away from Open Circle.
- **Same and Different Like Me** - Lessons designed to support disability awareness in K - 5.
 - **Current Grade Level Topics** - Kindergarten - Disability Awareness, Grade 1 - Physical Disabilities, Grade 2 - Sensory Disabilities - Hearing and Seeing, Grade 3 - Cognitive Disabilities, Grade 4 - Specific Learning Disabilities and ADD, Grade 5 - Mental Health and Autism
 - Program is currently being revised based on recommendations from the Wellness Review team so that kids in early grades develop a better awareness and understanding of differences.

SEL Practices and Resources On-Going

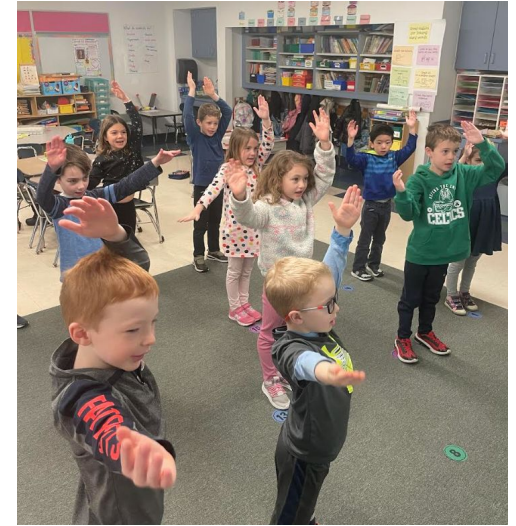
- **Responsive Classroom** - A student-centered, social and emotional learning approach to teaching and discipline. It is comprised of a set of research, and evidence-based practices designed to create safe, joyful, and engaging classrooms and school communities for both students and teachers. RC is an approach to teaching, not an SEL curriculum.
- **School Based Resource and Practices** - Teachers also work with the School Psychologists, Adjustment Counselors, Speech and Language Pathologists, Special Education Staff, ELL teachers, the SEL Coordinator, and other colleagues to develop lessons and access resources as specific issues or situations come up that they would like to address with their class or with individual or small groups of students.
- **School Wide Activities** - morning announcements, class meetings, lunch groups, community/team building, enrichment programs, workshops, field trips (e.g., Learning About Ourselves and Community, Hip Hop Assembly, Tree Tops, Escape Room)



Classroom Happenings

Activities Happening in Morning Meetings, Class Meetings, and Advisories

- Greeting- either greeting each other by name or the teacher greeting each student by name in open circles or as they enter.
- Share - using voice, sticking to topic, getting to know each other
- Activity - have fun, engage, cooperate, self-control
- News/Updates - Shared information, transition to rest of the day



Elementary Update

- **September/October**
 - Formed SEL Leadership Team (voluntary)
 - 18 staff members for across all schools
 - All grades Pre-K - 5 represented
- **November - January**
 - Piloted Everyday Speech in 16 classrooms
 - **Pros**
 - SLPs and School Psychologists currently use intervention resources with individuals and small groups
 - Digital components
 - Lessons align with CASEL competencies
 - Ease of use in terms of training and planning
 - **Challenges**
 - Tier one (universal) lessons brand new and still a work in progress
 - Not a lot of depth to some lessons
 - Repetitive (redundant)
 - Very few districts are using it - difficult to get feedback on results

Elementary Update Con't

- **January/February**
 - Investigated and Selected new SEL pilot
 - Surveyed other districts
 - Reviewed CASEL SEL Program Guide
 - Selected Second Step for Pilot
 - Coordinated with SS to initiate pilot
 - SEL Training K-2
- **March/April**
 - Second Step Pilot
 - Review of Program
 - Recommendation for Next Steps (hopefully adoption of a program)
- **Next Steps**
 - Summer curriculum work
 - Curriculum Adoption - implicit and explicit instructional practices

Thurston Middle School Update

- **December**
 - Faculty Meeting on SEL and Collaborative Study
- **January through June**
 - SEL Collaborative Study Groups PD
 - **Articles/Book Studies**
 - Middle School - A Place to Belong and Become
 - Seeing the Good in Students
 - Culturally Responsive Teaching and the Brain
 - Middle School - The Power of Our Words
 - **Content Groups - Advisory Leaders - Music & SEL - SEL in Math (Math Anxiety)**
- **Feb/March**
 - Meeting with Advisory Leaders
 - Revisiting advisory mission
 - Determining Goals
- **Next Steps**
 - SEL in the content areas
 - Advisory Content - Scope and Sequence

Wrap Up

Q & A

