



Massachusetts School Building Authority

Deborah B. Goldberg
Chairman, State Treasurer

James A. MacDonald
Chief Executive Officer

John K. McCarthy
Executive Director / Deputy CEO

December 20, 2018

Mr. Michael F. Walsh, Chair
Westwood Board of Selectmen
580 High Street
Westwood, MA 02090

Re: Town of Westwood, Paul Hanlon Elementary School

Dear Mr. Walsh:

I would like to thank representatives of the Town of Westwood (the "District") for meeting with Massachusetts School Building Authority (the "MSBA") staff on October 29, 2018 and for the subsequent conference call on December 7, 2018 to review enrollment projections and methodologies for the Paul Hanlon Elementary School project (the "Proposed Project"). As discussed, the next critical step is for the MSBA and the District to agree on a study enrollment for the Paul Hanlon Elementary School.

The Hanlon Elementary School presently is one of five schools serving the District's grade K-5 enrollment, and accordingly, this analysis will be particularly focused on the enrollment projections for those grades. In addition to studying options for the Paul Hanlon Elementary School, the MSBA understands that the District would like its feasibility study to also examine additional alternatives that include the consolidation of the Hanlon and Deerfield Elementary Schools for grades K-5 as well as consolidation of the Hanlon and Sheehan Elementary Schools for grades K-5. The MSBA understands that the District would also like to relocate its entire pre-kindergarten enrollment, currently housed at the high school, to the Hanlon Elementary School. Please note, however, as discussed at the meeting on October 29, 2018, the MSBA does not project pre-K enrollment in these figures, and the determination of allowable space for pre-K programming will be determined during the next phase of the MSBA's process at the time of the review of the District's proposed educational space program for the proposed project.

The table below illustrates the District's K-12 enrollment during the most recent ten-year period, including enrollment for the 2018-2019 school year as reported by the District to the Department of Elementary and Secondary Education ("DESE").

Year	K-5	6-8	9-12	Total
2009	1,501	686	857	1,501
2010	1,485	741	873	1,485



Year	K-5	6-8	9-12	Total
2011	1,486	750	922	1,486
2012	1,420	793	906	1,420
2013	1,434	783	932	1,434
2014	1,391	798	971	1,391
2015	1,353	780	975	1,353
2016	1,326	795	999	1,326
2017	1,281	793	999	1,281
2018	1,286	745	1,012	1,286

The total grade K-5 enrollment in Westwood as reported by the District for the current school year is 1,286 students, which reflects a decrease of 215 students (-14%) from the grade K-5 enrollment reported in 2009-2010, which was the maximum grade K-5 enrollment reported in the preceding ten years. Additionally, the 2018-2019 grade K-5 enrollment reflects a decrease of approximately 110 students (-8%) from the average grade K-5 enrollment reported during the preceding ten-year period.

The MSBA understands that the District is proposing a design enrollment to accommodate approximately 650 students in grades K-5 at the Hanlon Elementary School. The enrollment in grade K-5 reported to DESE for the 2017-2018 school year at the Hanlon Elementary School was 220 students.

With respect to future enrollments, the MSBA's base enrollment forecast indicates Westwood's grade K-5 enrollment will increase slightly for the next 2-3 years then increase more robustly through the 2027-2028 school year. The average grade K-5 enrollment forecast for the projected period through the 2027-2028 school year is 1,470 students.

As a result of a sensitivity analysis performed by the MSBA on this base enrollment projection and further discussion with the District, the following adjustments have been made to the base enrollment projection:

- Out-of-District Enrollment
 - In order to adjust for fluctuations to the out-of-district enrollment patterns of the District's residents over time, the MSBA has made an additional adjustment to the base enrollment projection.
 - In order to make this adjustment, the MSBA adjusted the grade to grade survival ratios for K-5 by a total of 3.3% throughout a four year period in the projection.
 - This adjustment added 40 students to the projected averages for grades K-5 as compared to the base enrollment projection.

- Development
 - Based on the discussions between the District and the MSBA, and the anticipated development information provided by the District, the MSBA enrollment model has been adjusted to use the five-year 75th percentile cohort survival rate for 2019

- and 2020 rather than the five-year average cohort survival rate which is utilized throughout the base enrollment forecast.
- This adjustment added 10 students to the projected averages for grades K-5 as compared to the base enrollment projection.

In order to recommend a design enrollment for an appropriately sized project for the Hanlon Elementary School, the MSBA performed a capacity analysis of the District's grade K-5 schools. Utilizing the 2016 School Survey data and the District's class size guidelines, the capacity analysis indicates the following:

		Grades			
		K-3	4-5		
Students per CR		20	21		
Deerfield	# Classrooms	7	5	12 classrooms	
	Capacity	140	105	245 students	
Downey	# Classrooms	9	4	13 classrooms	
	Capacity	180	84	264 students	
Martha Jones	# Classrooms	9	7	16 classrooms	
	Capacity	180	147	327 students	
William E Sheehan	# Classrooms	11	7	18 classrooms	
	Capacity	220	147	367 students	
Total Capacity				1,203 students	

As a result of the analysis on the base enrollment forecast, the historical enrollment trends of the District, the adjustments described above, and the analysis of capacity, the MSBA recommends study enrollments for the Proposed Project as follows:

- Hanlon Elementary School (no consolidation): 315 students
- Consolidation of the Hanlon and Deerfield Elementary Schools: 560 students
- Consolidation of the Hanlon and Sheehan Elementary Schools: 685 students

If the consolidation of the elementary schools is determined to be the preferred solution, as part of the Preferred Schematic Report, the District will be required to establish the proposed future use or disposition of any existing spaces vacated or otherwise reprogrammed as a result of the Proposed Project, submit additional information regarding its proposed redistricting strategy including how it will be implemented, and demonstrate that the School Committee and necessary District officials support the proposed redistricting. The MSBA will require a written plan from

Page 4
December 19, 2018
Paul Hanlon Elementary School Enrollment Letter

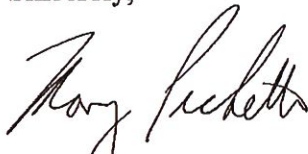
the District describing the process for determining local support for potential redistricting and/or consolidation. Upon the MSBA's approval of the District's Preferred Solution, a design enrollment certification that is specific to the enrollment number and grade reconfiguration associated with the approved Preferred Solution will be forwarded to the District.

Please note that the MSBA's recommendations for multiple study enrollments does not represent an affirmation by the MSBA for approval and/or funding of any of these options and are intended only to provide a framework to inform the Feasibility Study to be conducted as a means of determining the most cost effective and educationally sound solution to be agreed upon by the District and the MSBA. The MSBA's study enrollment recommendations assume full utilization of all school facilities that remain on-line. Accordingly, as part of the Feasibility Study, the District will be required to document the enrollment capacity of each existing facility anticipated to remain in service and how the spaces within each existing facility are anticipated to be used once the Proposed Project opens.

The MSBA believes that this study enrollment recommendation will position the District to efficiently meet space capacity needs throughout future enrollment variations. Please sign and return the attached certification within 21 calendar days to confirm agreement on this study enrollment. If the District feels that this study enrollment does not meet the needs of the District, please respond to this letter via e-mail to Brian Lynch and propose three meeting/conference call times for which the District can be available to discuss enrollment.

If you have any questions regarding this matter, please do not hesitate to contact me or Brian Lynch (Brian.Lynch@massschoolbuildings.org) at 617-720-4466.

Sincerely,



Mary Pichetti
Director of Capital Planning

Cc: Legislative Delegation
Michael Jaillet, Westwood Town Administrator
Charles Donahue, Chair, Westwood School Committee
Emily J. Parks, Superintendent, Westwood Public Schools
File: 10.2 Letters (Region 4)

MSBA Enrollment Projection – Westwood

Historic Enrollment Data (DESE)

YEAR	PK	K	1	2	3	4	5	6	7	8	9	10	11	12	K-12
1993-94	33	181	193	179	184	133	142	135	135	119	109	134	109	122	1,875
1994-95	60	192	188	195	182	185	149	146	134	137	114	111	134	115	2,320
1995-96	66	198	200	191	196	190	185	156	142	132	131	118	110	137	2,086
1996-97	62	206	208	204	196	200	193	192	151	149	132	130	119	111	2,191
1997-98	57	204	211	217	206	200	197	200	176	154	147	133	135	119	2,299
1998-99	58	220	211	220	217	210	207	201	196	181	154	149	130	136	2,432
1999-00	37	224	216	209	214	213	210	203	186	192	168	160	144	131	2,470
2000-01	0	223	223	218	210	220	213	215	208	176	170	170	163	144	2,553
2001-02	14	191	225	224	220	215	219	216	207	202	173	172	159	162	2,585
2002-03	29	228	209	227	224	222	218	220	219	207	193	176	167	156	2,666
2003-04	38	211	237	209	229	224	226	221	212	217	206	194	173	164	2,723
2004-05	36	237	214	243	210	231	225	233	213	215	214	201	189	169	2,794
2005-06	58	237	243	214	251	216	233	232	227	203	212	206	198	185	2,857
2006-07	59	246	245	252	221	257	227	242	228	228	201	212	204	201	2,964
2007-08	55	218	250	246	253	223	261	221	233	229	207	199	213	200	2,953
2008-09	49	266	234	255	248	259	221	260	217	226	222	204	195	210	3,017
2009-10	56	233	263	229	259	255	262	224	250	212	225	224	214	194	3,044
2010-11	49	217	243	268	232	265	260	261	223	257	211	227	223	212	3,099
2011-12	46	225	226	250	274	243	268	263	262	225	257	218	222	225	3,158
2012-13	47	184	235	230	253	274	244	276	260	257	210	257	215	224	3,119
2013-14	47	201	207	249	240	264	273	253	273	257	254	211	256	211	3,149
2014-15	44	206	213	209	252	248	263	272	255	271	247	257	214	253	3,160
2015-16	43	186	217	219	219	262	250	267	262	251	260	245	253	217	3,108
2016-17	42	177	207	233	223	222	264	273	262	260	237	260	248	254	3,120
2017-18	46	201	189	212	238	219	222	271	261	261	253	236	260	250	3,073
2018-19	42	206	209	194	223	233	221	233	258	254	258	249	241	264	3,043

K-5	6-8	9-12
1,012	389	474
1,091	417	474
1,160	430	496
1,207	492	492
1,235	530	534
1,285	578	569
1,286	581	603
1,307	599	647
1,294	625	666
1,328	646	692
1,336	650	737
1,360	661	773
1,394	662	801
1,448	698	818
1,451	683	819
1,483	703	831
1,501	686	857
1,485	741	873
1,486	750	922
1,420	793	906
1,434	783	932
1,391	798	971
1,353	780	975
1,326	795	999
1,281	793	999
1,286	745	1,012

MSBA Enrollment Projection – Westwood

Historic Birth Data (MA Department of Public Health)

Maternal Age	1989	1990	1991	1992	1993	1994	1995	1996	1997	1998	1999	2000	2001	2002	2003	2004	2005	2006	2007	2008	2009	2010	2011	2012	2013	2014	2015	2016
10-14 Yrs	0	0	0	0	0	0	0	0	0	0	0	0	0	0	0	0	0	0	0	0	0	0	0	0	0	0	0	0
15-19 Yrs	0	0	0	0	0	0	0	0	0	0	0	0	0	0	0	0	0	0	0	0	0	0	0	0	0	0	0	0
20-24 Yrs	0	0	7	0	0	0	0	0	0	0	5	0	0	0	0	0	0	0	6	0	0	0	0	0	0	0	0	0
25-29 Yrs	23	36	30	30	37	22	25	36	19	19	22	21	23	11	20	10	9	15	11	8	12	6	10	10	9	14	15	15
30-34 Yrs	68	67	70	74	66	84	84	68	104	90	88	79	74	82	81	71	59	59	54	48	38	40	44	55	51	44	49	66
35-39 Yrs	45	30	35	30	44	41	41	58	50	56	71	82	66	62	65	60	59	71	59	48	54	38	41	34	41	42	44	35
40-44 Yrs	0	0	0	5	7	5	8	11	0	8	14	8	11	16	13	12	7	12	13	12	6	5	14	5	10	0	9	0
Total Births	146	137	145	144	159	155	163	177	179	176	202	193	181	175	179	156	136	160	144	120	114	94	113	105	111	115	117	129

Female Population Data

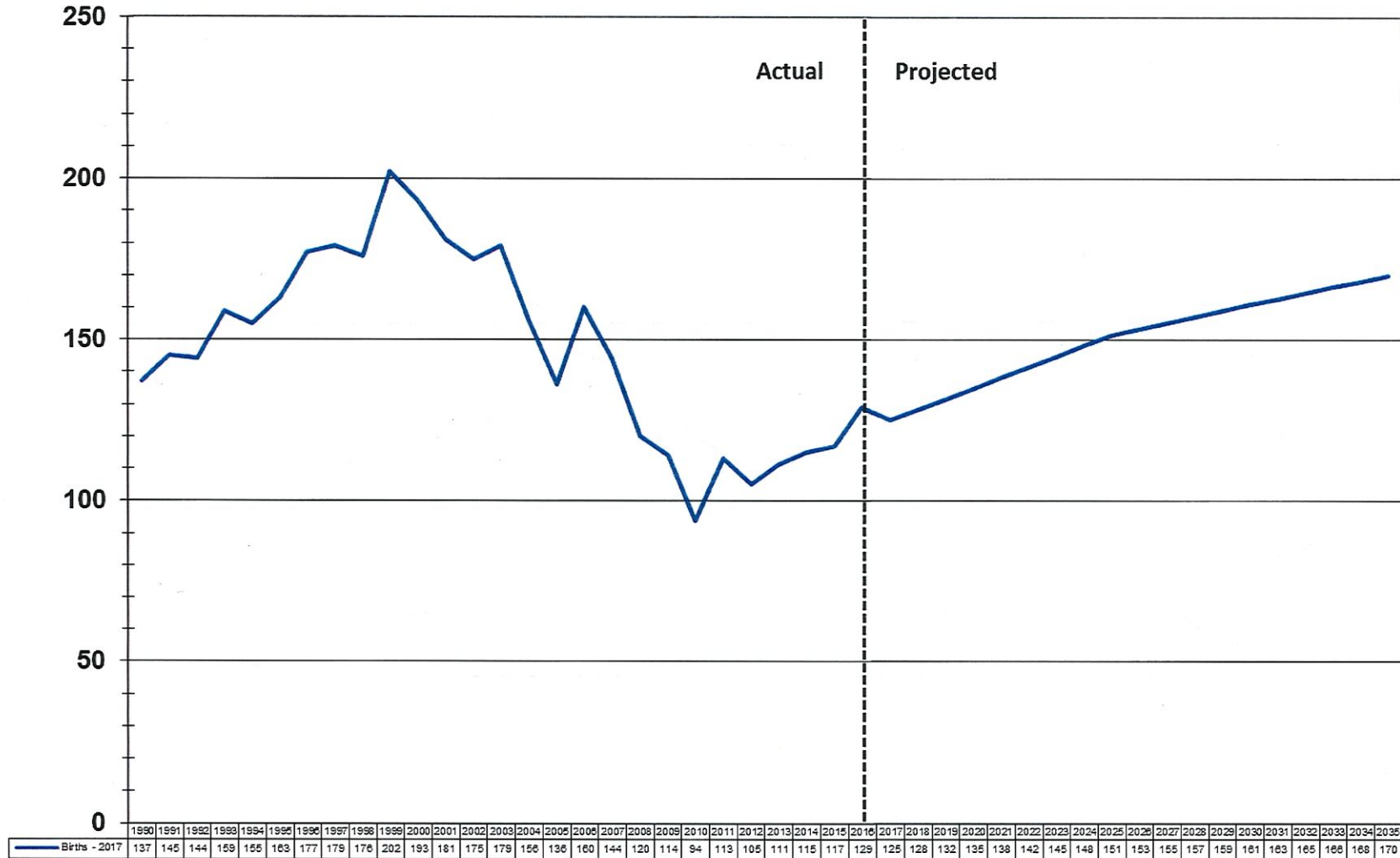
Maternal Age	US Census Data			U Mass Donohue Institute					2013-2015 Avg Fertility Rate
	1990	2000	2010	2015	2020	2025	2030	2035	
10-14 Yrs	342	533	695	782	595	441	526	590	0.00%
15-19 Yrs	390	346	485	520	565	431	327	383	0.00%
20-24 Yrs	412	150	230	266	269	295	225	177	0.00%
25-29 Yrs	360	212	164	236	224	240	264	204	6.92%
30-34 Yrs	441	414	203	229	293	300	321	357	24.79%
35-39 Yrs	478	627	426	314	330	430	445	475	13.55%
40-44 Yrs	504	658	666	566	401	422	551	573	0.53%
Total Females	6,532	7,403	7,655	7,843	7,710	7,675	7,818	8,042	1.54%

Birth Projections

Maternal Age	2017	2018	2019	2020	2021	2022	2023	2024	2025	2026	2027	2028	2029	2030	2031	2032	2033	2034	2035
10-14 Yrs	0	0	0	0	0	0	0	0	0	0	0	0	0	0	0	0	0	0	0
15-19 Yrs	0	0	0	0	0	0	0	0	0	0	0	0	0	0	0	0	0	0	0
20-24 Yrs	0	0	0	0	0	0	0	0	0	0	0	0	0	0	0	0	0	0	0
25-29 Yrs	16	16	16	16	16	16	16	16	17	17	17	18	18	18	17	17	16	15	14
30-34 Yrs	63	66	69	73	73	73	74	74	74	75	76	77	79	80	81	83	85	87	88
35-39 Yrs	43	44	44	45	47	50	53	56	58	59	59	59	60	60	61	62	63	64	64
40-44 Yrs	3	2	2	2	2	2	2	2	2	2	3	3	3	3	3	3	3	3	3
Totals	125	128	132	135	138	142	145	148	151	153	155	157	159	161	163	165	166	168	170

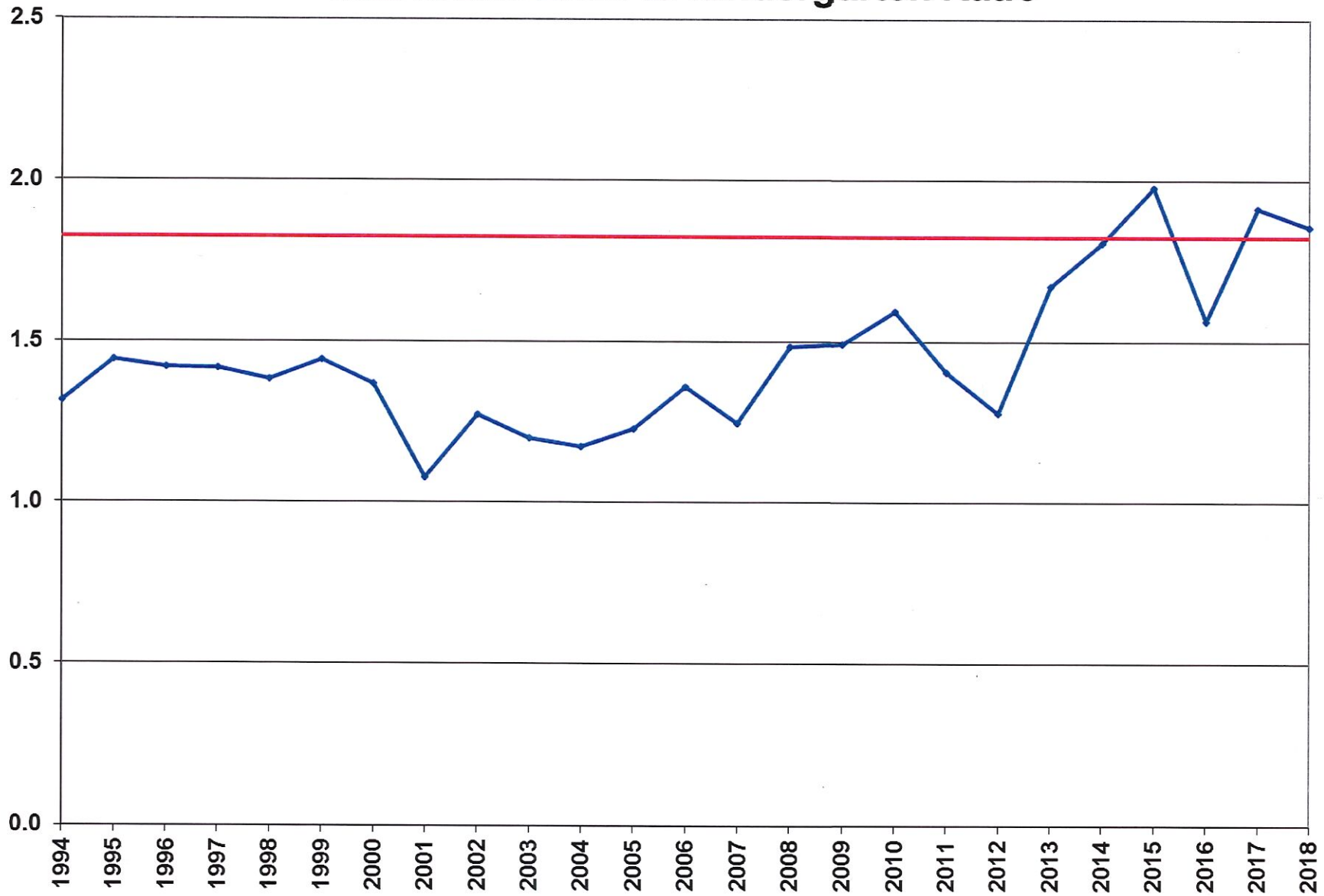
MSBA Enrollment Projection – Westwood

Westwood Births



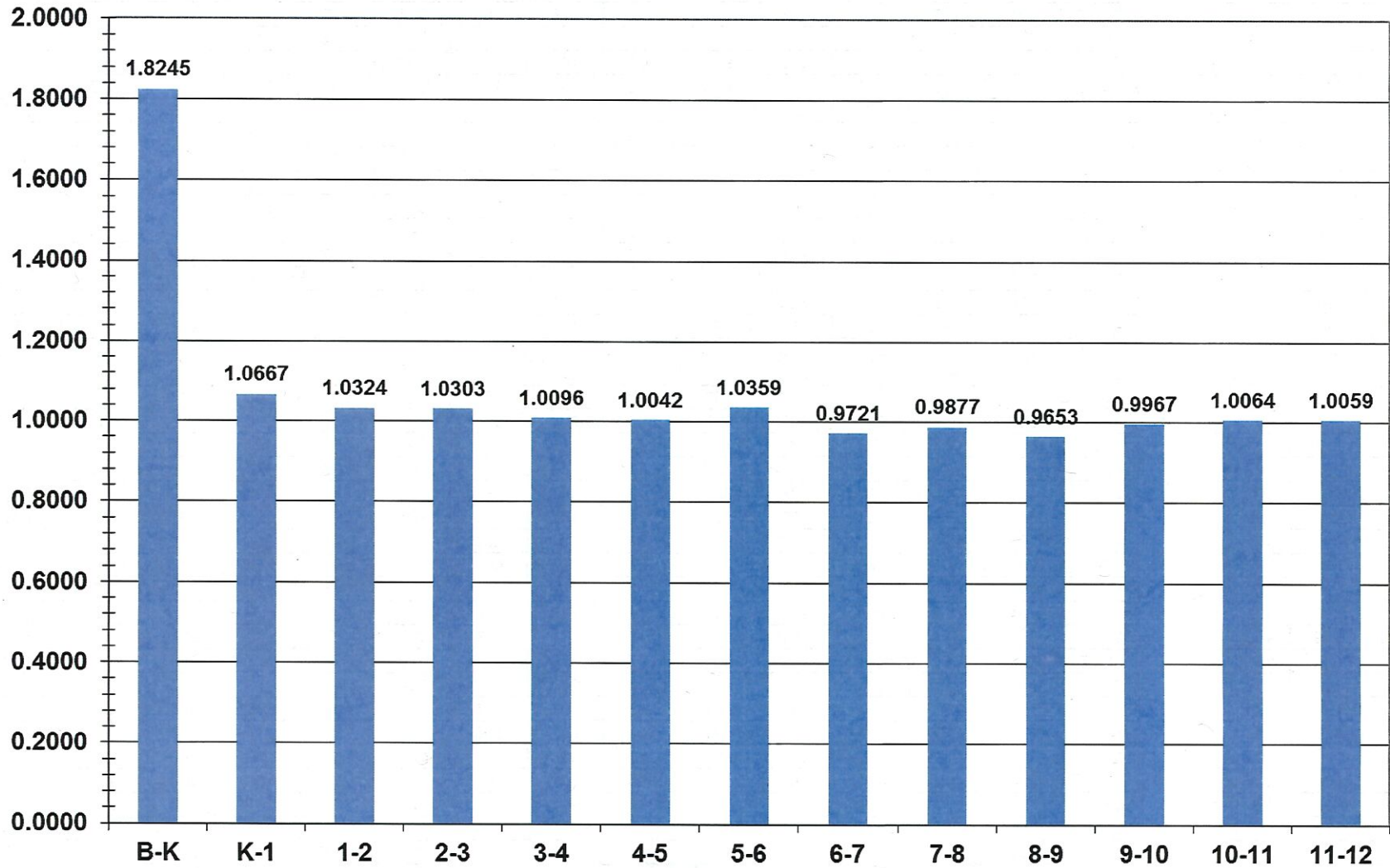
MSBA Enrollment Projection – Westwood

Westwood Birth to Kindergarten Ratio



MSBA Enrollment Projection – Westwood

Westwood Grade-to-Grade Ratios - 5 Yr Average



MSBA Enrollment Projection – Westwood

Base Enrollment Projections

YEAR	K	1	2	3	4	5	6	7	8	9	10	11	12	K-12
1993	181	193	179	184	133	142	135	135	119	109	134	109	122	1,875
1994	192	188	195	182	185	149	146	134	137	114	111	134	115	1,982
1995	198	200	191	196	190	185	156	142	132	131	118	110	137	2,086
1996	206	208	204	196	200	193	192	151	149	132	130	119	111	2,191
1997	204	211	217	206	200	197	200	176	154	147	133	135	119	2,299
1998	220	211	220	217	210	207	201	196	181	154	149	130	136	2,432
1999	224	216	209	214	213	210	203	186	192	168	160	144	131	2,470
2000	223	223	218	210	220	213	215	208	176	170	170	163	144	2,553
2001	191	225	224	220	215	219	216	207	202	173	172	159	162	2,585
2002	228	209	227	224	222	218	220	219	207	193	176	167	156	2,666
2003	211	237	209	229	224	226	221	212	217	206	194	173	164	2,723
2004	237	214	243	210	231	225	233	213	215	214	201	189	169	2,794
2005	237	243	214	251	216	233	232	227	203	212	206	198	185	2,857
2006	246	245	252	221	257	227	242	228	228	201	212	204	201	2,964
2007	218	250	246	253	223	261	221	233	229	207	199	213	200	2,953
2008	266	234	255	248	259	221	260	217	226	222	204	195	210	3,017
2009	233	263	229	259	255	262	224	250	212	225	224	214	194	3,044
2010	217	243	268	232	265	260	261	223	257	211	227	223	212	3,099
2011	225	226	250	274	243	268	263	262	225	257	218	222	225	3,158
2012	184	235	230	253	274	244	276	260	257	210	257	215	224	3,119
2013	201	207	249	240	264	273	253	273	257	254	211	256	211	3,149
2014	206	213	209	252	248	263	272	255	271	247	257	214	253	3,160
2015	186	217	219	219	262	250	267	262	251	260	245	253	217	3,108
2016	177	207	233	223	222	264	273	262	260	237	260	248	254	3,120
2017	201	189	212	238	219	222	271	261	261	253	236	260	250	3,073
2018	206	209	194	223	233	221	233	258	254	258	249	241	264	3,043
2019	210	220	216	200	225	234	229	226	255	245	257	251	242	3,010
2020	213	224	227	222	202	226	242	223	224	246	244	259	252	3,004
2021	235	228	231	234	224	203	234	236	220	216	245	246	260	3,012
2022	228	251	235	238	236	225	210	228	233	212	215	247	247	3,006
2023	234	244	259	242	240	237	233	204	225	225	211	217	248	3,020
2024	240	250	251	267	245	241	245	227	202	217	224	213	218	3,040
2025	246	256	258	259	270	246	250	239	224	195	216	225	214	3,098
2026	252	263	265	266	262	271	254	243	236	216	194	218	227	3,166
2027	258	269	271	273	268	263	280	247	240	228	216	195	219	3,227
2028	264	276	278	279	275	270	272	273	244	232	227	217	196	3,303

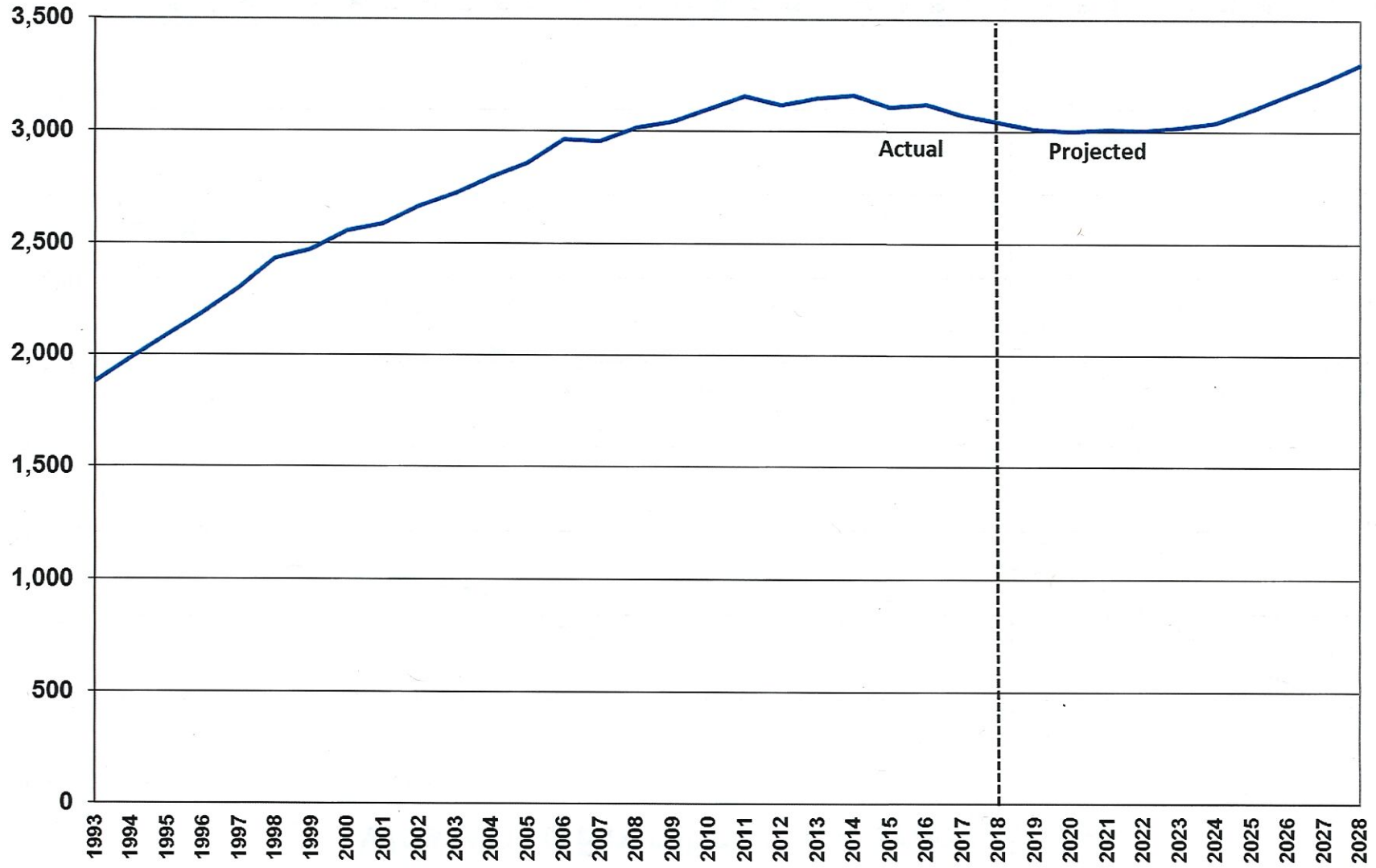
K-5	6-8	9-12
1,012	389	474
1,091	417	474
1,160	430	496
1,207	492	492
1,235	530	534
1,285	578	569
1,286	581	603
1,307	599	647
1,294	625	666
1,328	646	692
1,336	650	737
1,360	661	773
1,394	662	801
1,448	698	818
1,451	683	819
1,483	703	831
1,501	686	857
1,485	741	873
1,486	750	922
1,420	793	906
1,434	783	932
1,391	798	971
1,353	780	975
1,326	795	999
1,281	793	999
1,286	745	1,012
1,304	710	995
1,314	689	1,001
1,355	690	967
1,414	670	922
1,457	662	901
1,495	674	872
1,535	713	850
1,578	733	855
1,602	768	857
1,642	789	872

10 yr avg	204	221	229	241	249	253	259	257	251	241	238	235	230	3,107
5 yr avg	195	207	213	231	237	244	263	260	259	251	249	243	248	3,101
2 yr avg	204	199	203	231	226	222	252	260	258	256	243	251	257	3,058
5 yr proj	224	233	234	227	226	225	230	223	231	229	235	244	250	3,010
10 yr proj	238	248	249	248	245	241	245	234	230	223	225	229	232	3,089

1,396	766	945
1,327	782	991
1,284	769	1,006
1,369	684	957
1,470	710	909

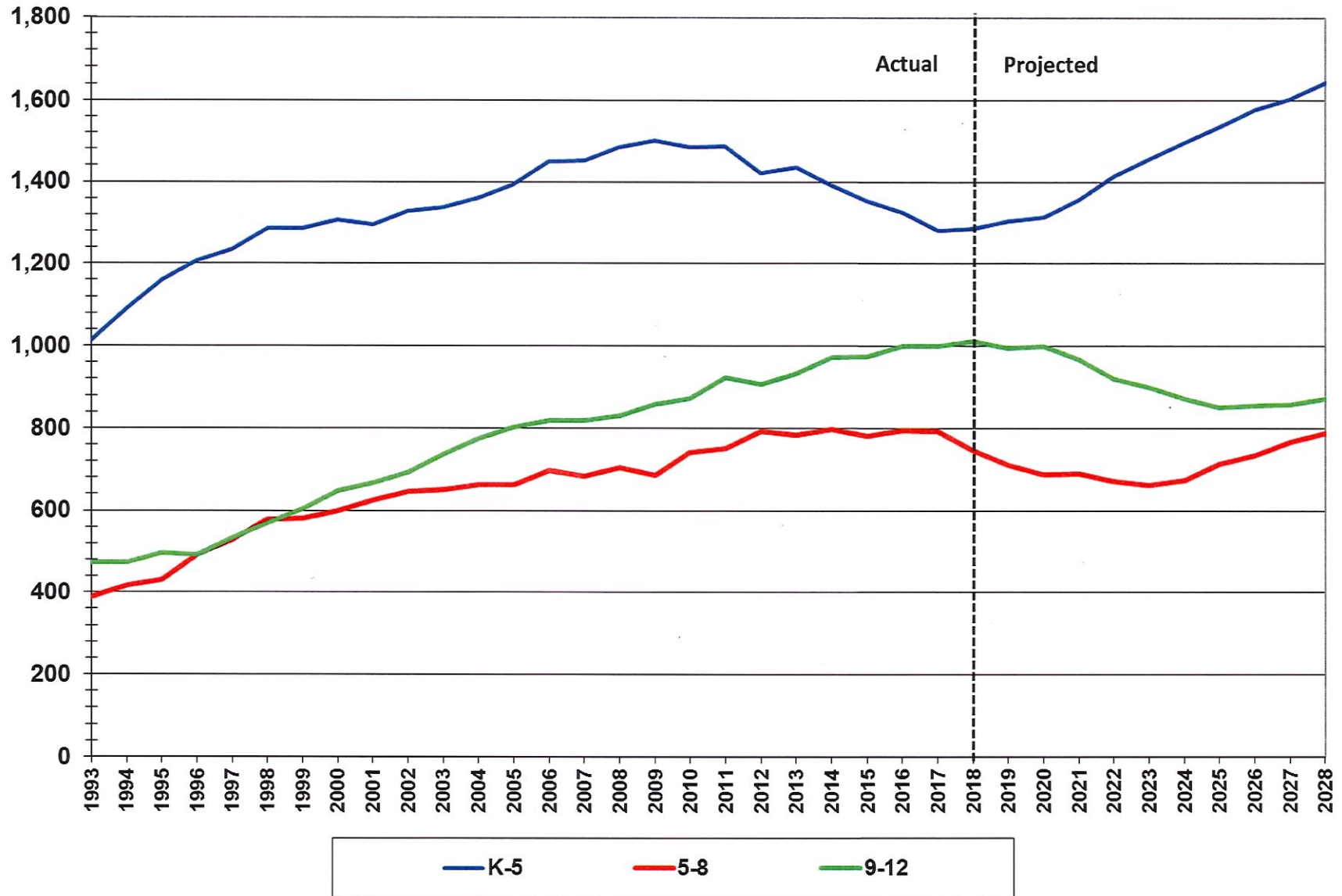
MSBA Enrollment Projection – Westwood

Westwood Total Enrollment



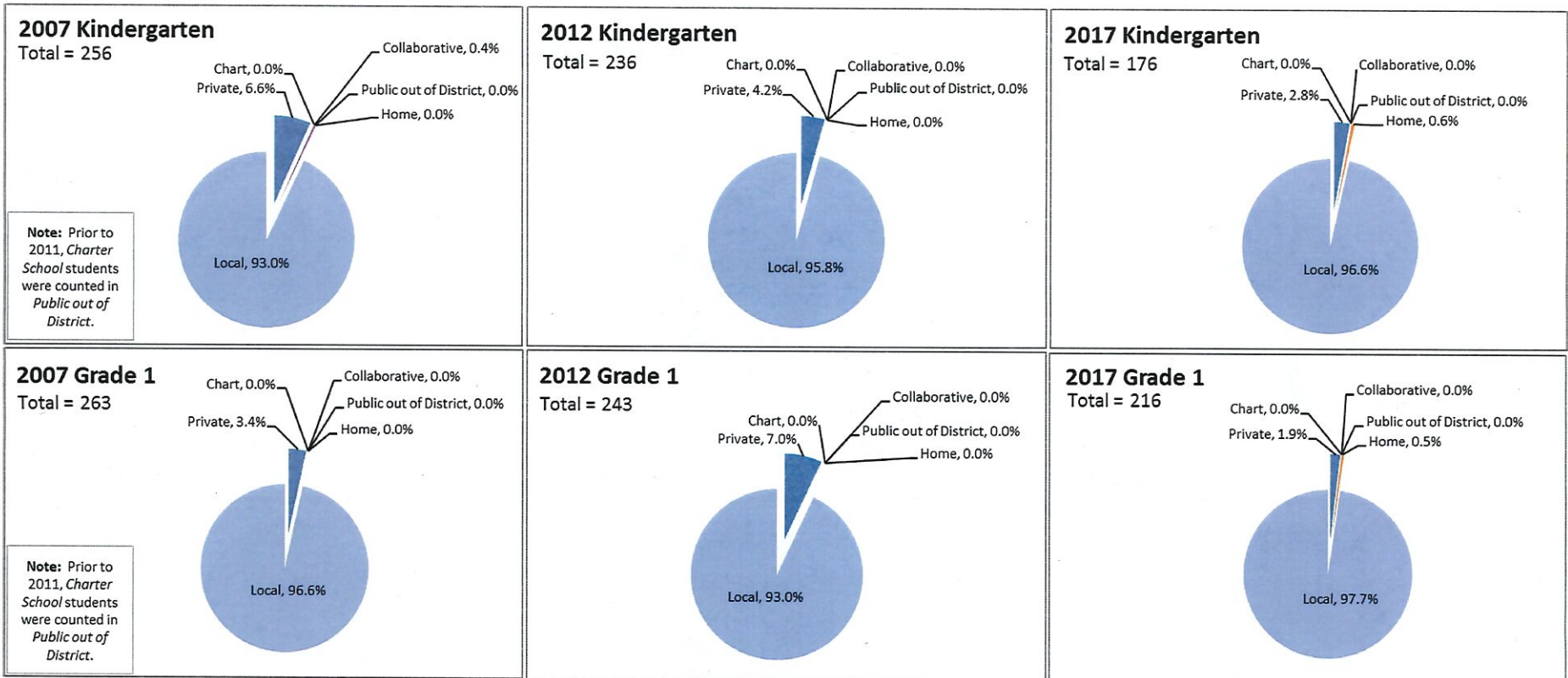
MSBA Enrollment Projection – Westwood

Westwood Enrollment by Grade Group



MSBA Enrollment Projection – Westwood

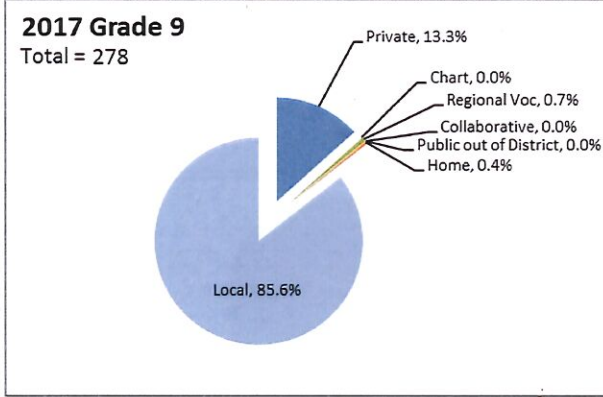
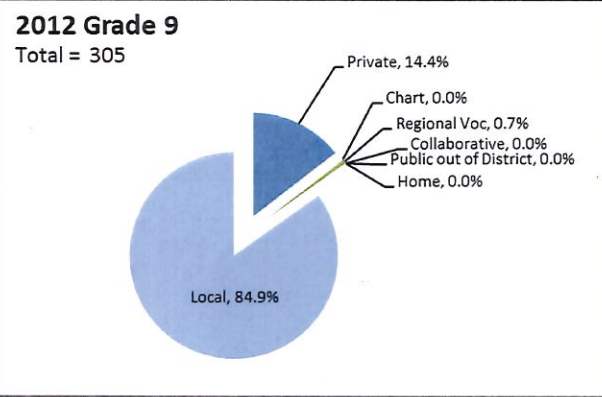
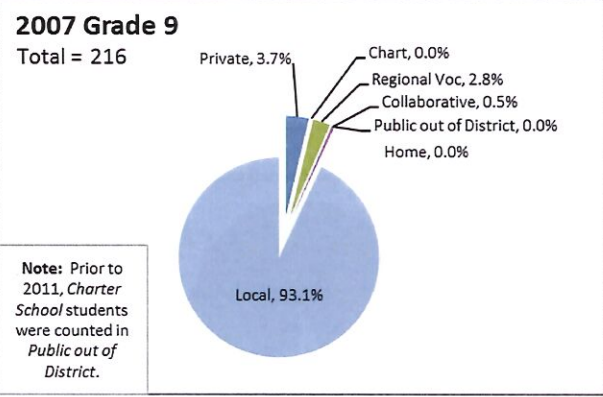
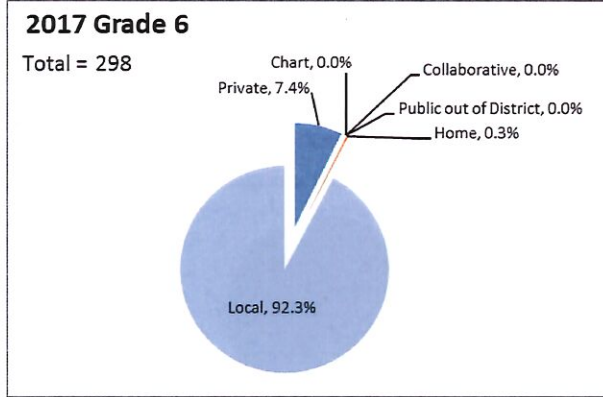
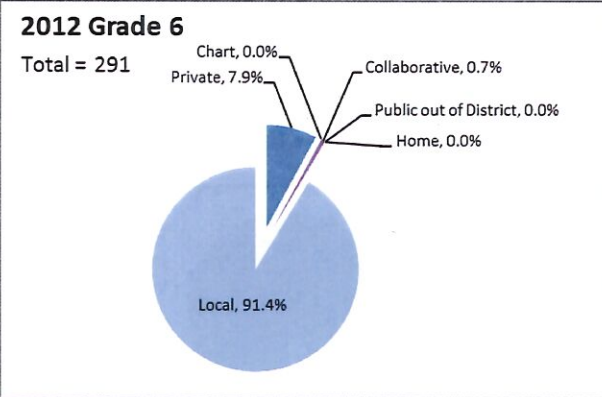
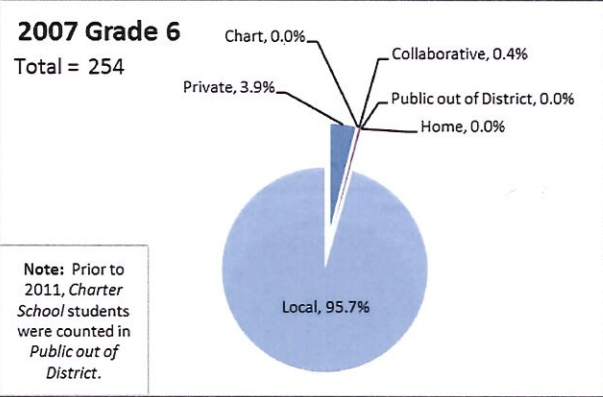
The following charts show the School Attending Children Profiles (indicating where all school-aged children that reside in the district attend school) at the typical transition grades for elementary school, middle school, and high school.



School Attending Children Profiles Grades K and 1

These profiles show the enrollment of all full-time students whose parents or legal guardians are residents of the city or town.

MSBA Enrollment Projection – Westwood



School Attending Children Profiles

Grades 6 and 9

These profiles show the enrollment of all full-time students whose parents or legal guardians are residents of the city or town.