

Westwood Public Schools
**Hanlon Elementary School
Building Project**

School Building Committee

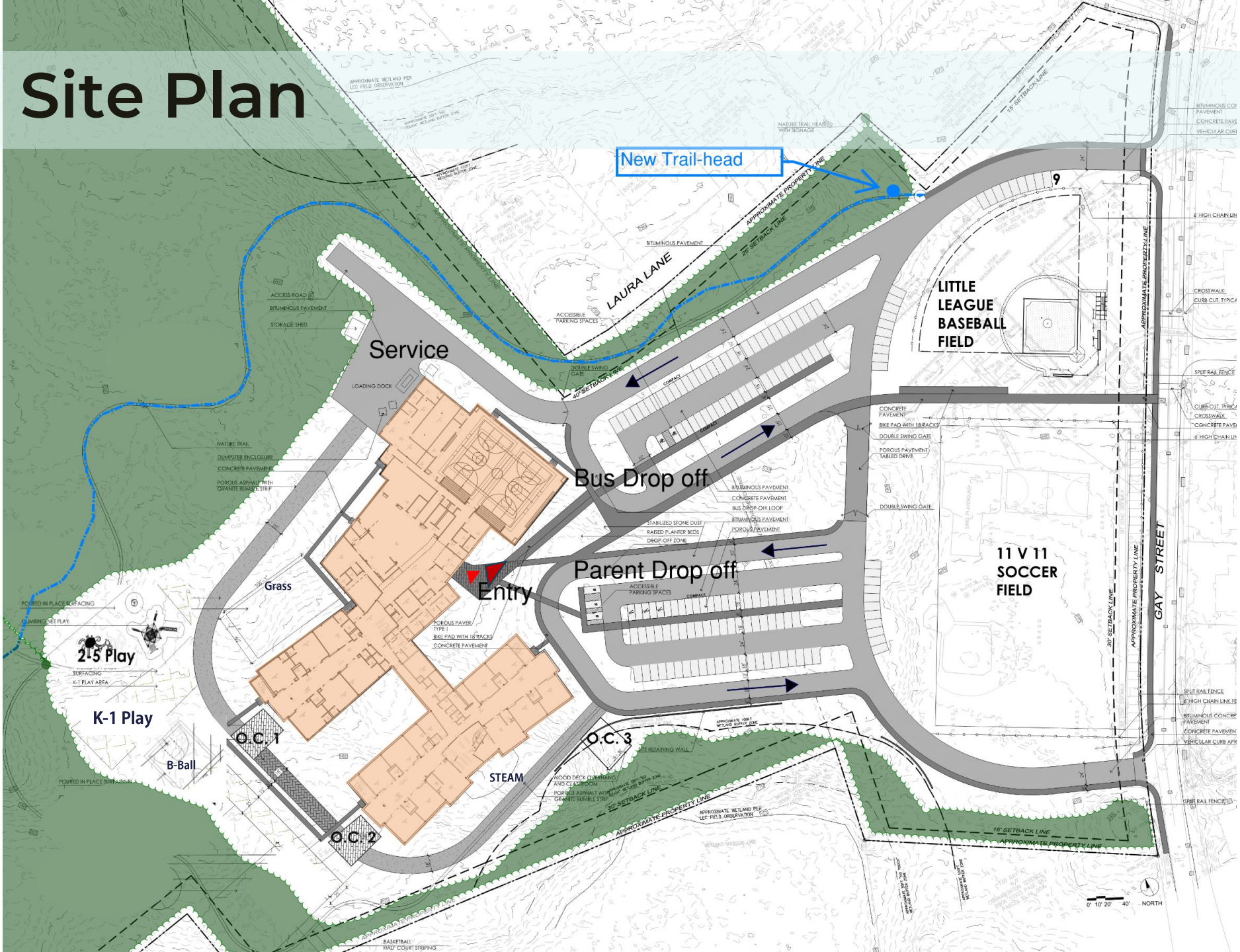
10.02.2020



Agenda

- **Site Plan Update**
- **Floor Plan Update**
- **Intro to Exterior Imagery and A&D feedback**
- **Sustainability Subcommittee Recommendation**

Site Plan



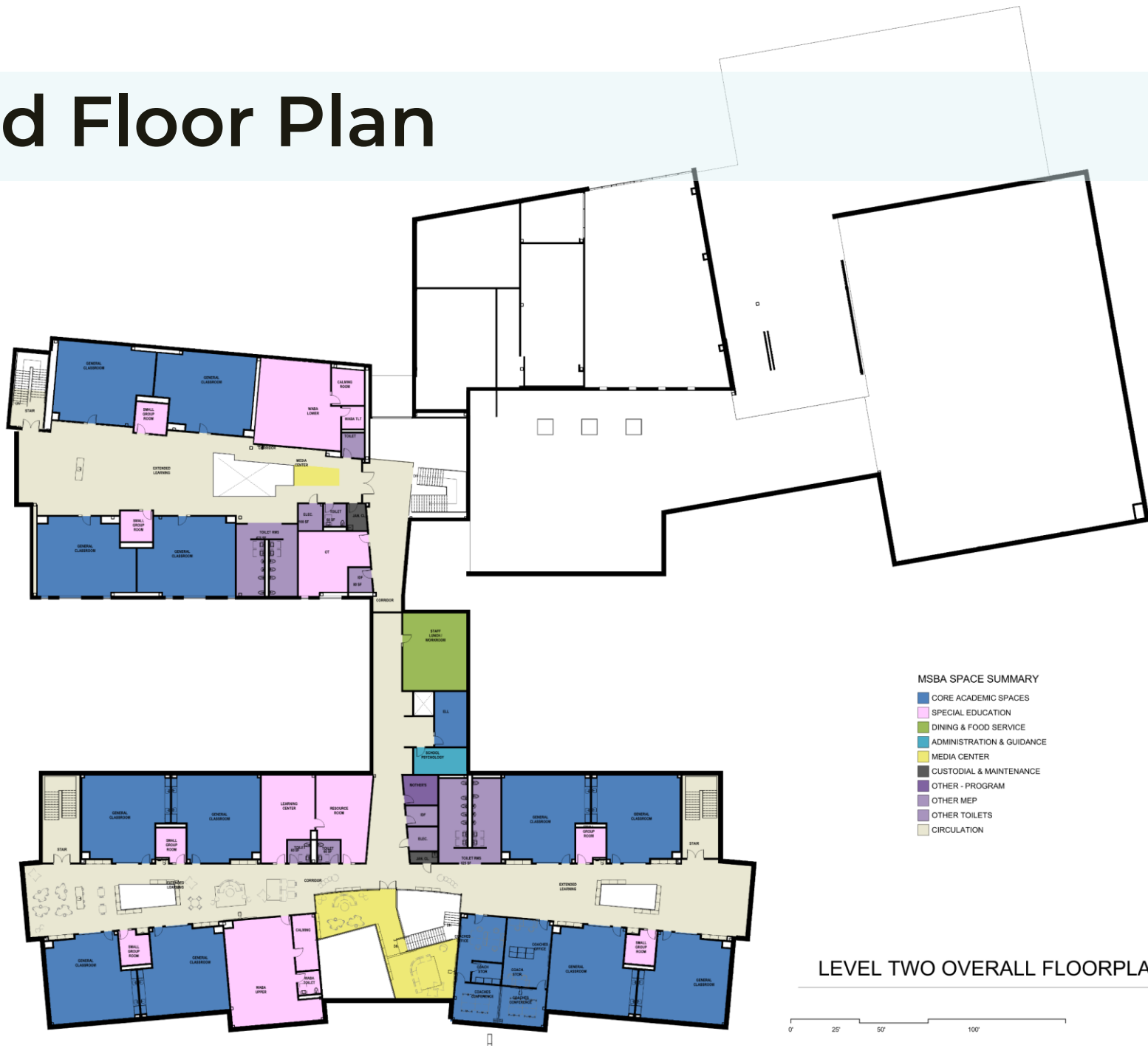
First Floor Plan



Cafeteria



Second Floor Plan



LEVEL TWO OVERALL FLOORPLAN

Existing Site Color Palette



DMC 3799
VERY DARK
PEWTER GRAY

DMC 3847
DARK
TEAL GREEN

DMC 3815
DARK
CELADON GREEN

DMC 435
VERY
LIGHT BROWN

DMC 977
LIGHT
GOLDEN BROWN

DMC 738
VERY
LIGHT TAN

Stitch Palettes



Exterior Materials Palette



Dark Ironspot



Sandstone Rock



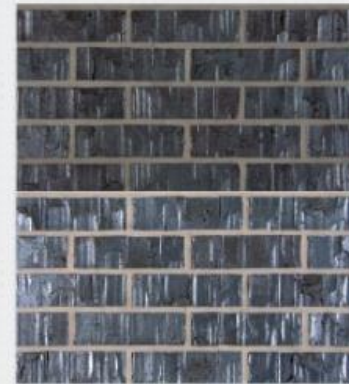
Rustik



Pale



Grey Blend



Manganese Ironspot



Natural Rock



Nux



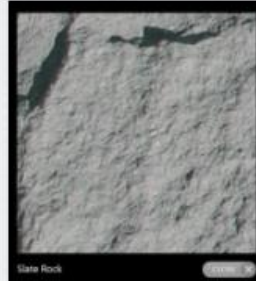
Light Brown



Medium Ironspot #77



Manganese Brown



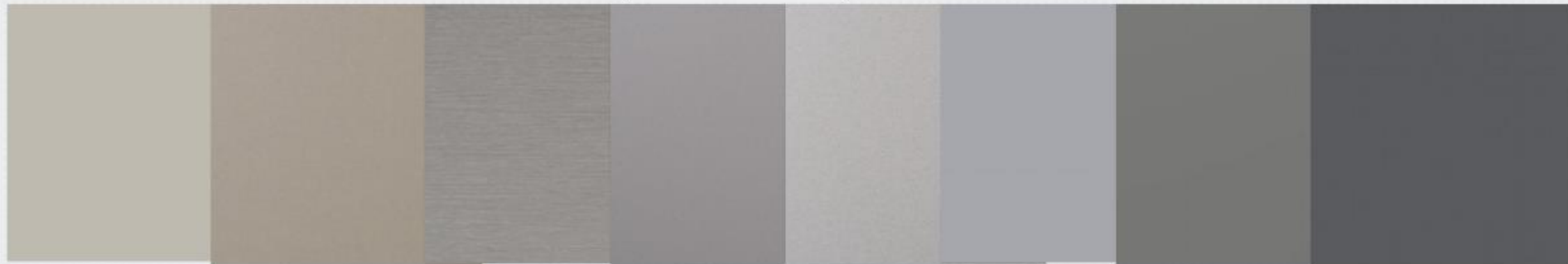
Slate Rock



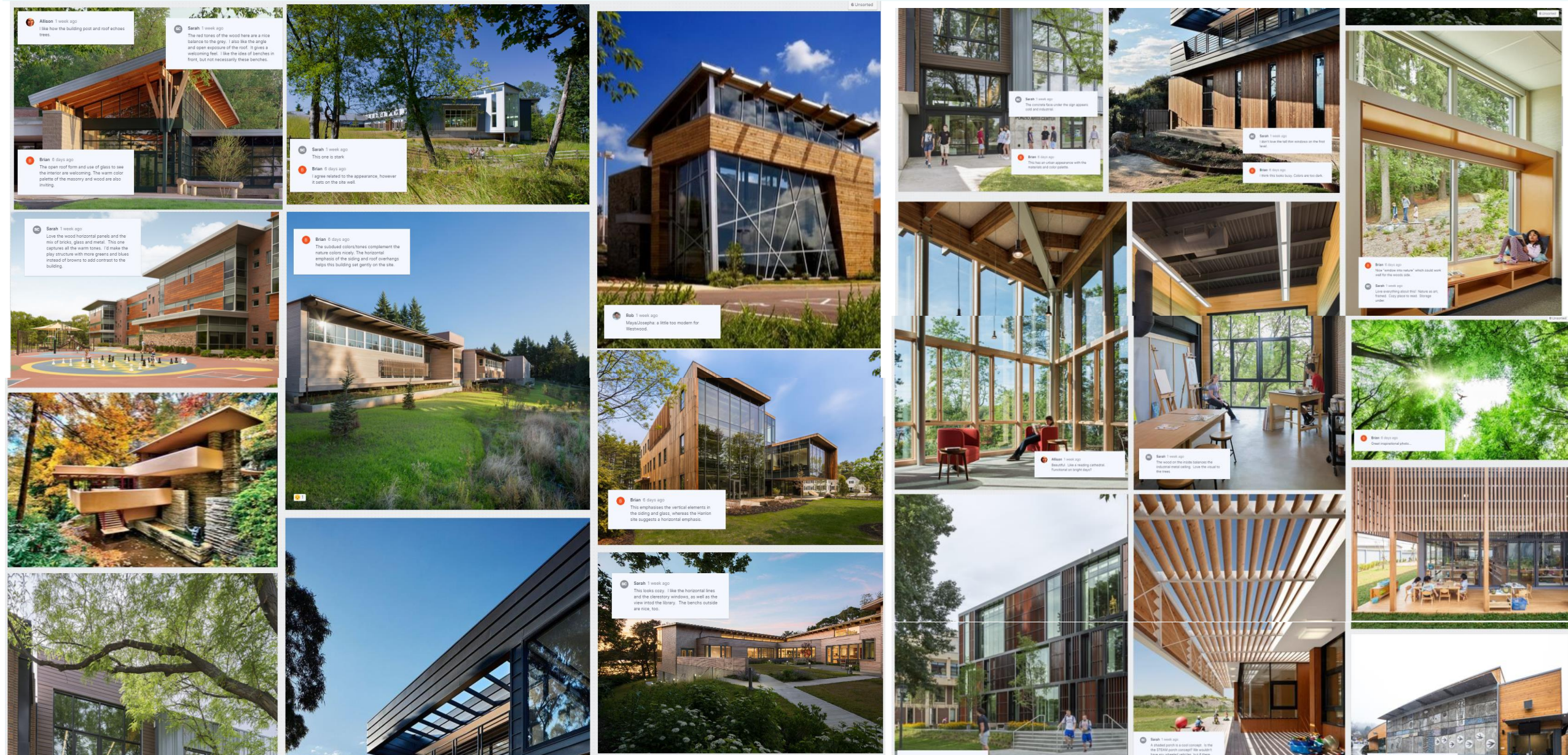
Deep Brown



Dark Brown



Exterior Inspiration Board



Tier 2 vs. Tier 3 – Heating/Cooling Systems

Tier 2: Geothermal Source Heat Pump System

Approximately 80 Wells

EUI: 20.9

\$138K Annual Electrical Costs

\$3.8 M capital costs

39.8% above baseline energy model

Tier 3: Geothermal Source Heat Pump System with supplemental electric boiler

Approximately 70 Wells

EUI: 23.1

\$153k Annual Electrical Costs

\$3.7 M capital costs

33.5% above baseline energy model

Sustainability Subcommittee Recommends Tier 2

- Lower EUI, more energy efficient
- Lower annual operating costs
- Electric boiler does not provide emergency back-up

Next Steps

October:

Community Presentation

November:

Submit Schematic Design Package for Cost Estimates

December:

Receive cost estimates

SBC vote on MSBA submission

Submission to MSBA