

## Agenda

### Shared Spaces - Floor Pattern

- Cafeteria
- ELA – 'B' Wing
- ELA – 'A' Wing – East + West

### Classroom – Floor Pattern + Accent Colors

- 'B' Wing
- 'A' Wing West
- 'A' Wing East

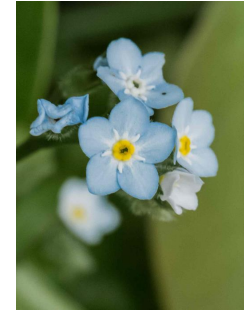
### Desk Design

- Administration
- Media Center

### Railing Design

- Media Center

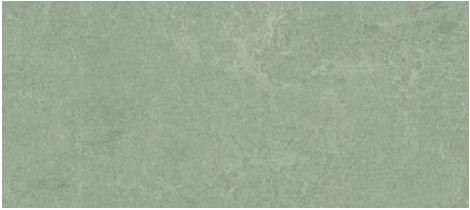
# Westwood: Hanlon-Deerfield Elementary School Inspiration





# Westwood: Hanlon-Deerfield Elementary School

## Overall – Trunk and Branches

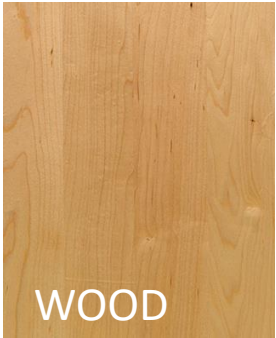




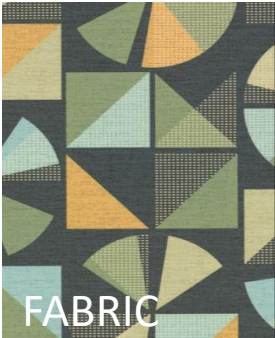
Westwood: Hanlon-Deerfield Elementary School  
CAFETERIA



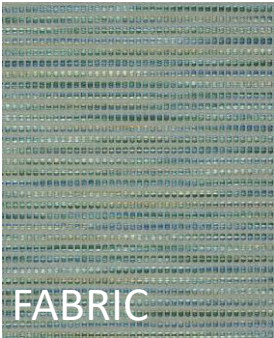
FLOORING



WOOD



FABRIC



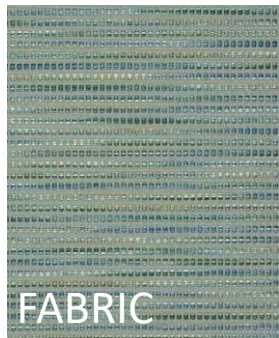
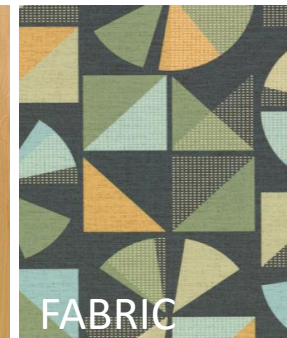
FABRIC

# Westwood: Hanlon-Deerfield Elementary School

## B WING - ELA



FLOORING





# Westwood: Hanlon-Deerfield Elementary School

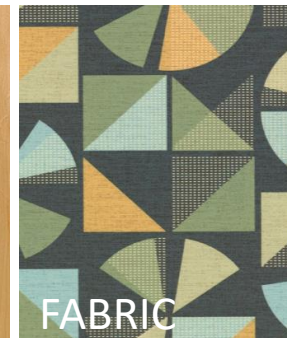
## A WING – ELA WEST



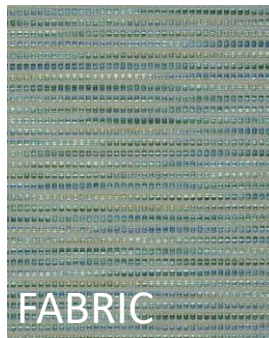
FLOORING



WOOD



FABRIC



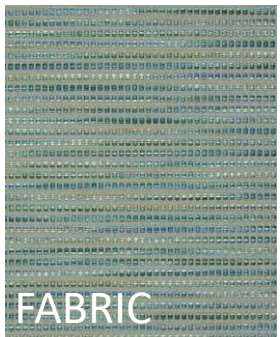
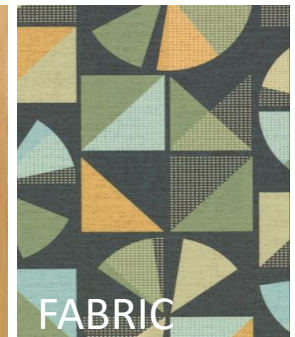
FABRIC

# Westwood: Hanlon-Deerfield Elementary School

## A WING – ELA EAST



FLOORING





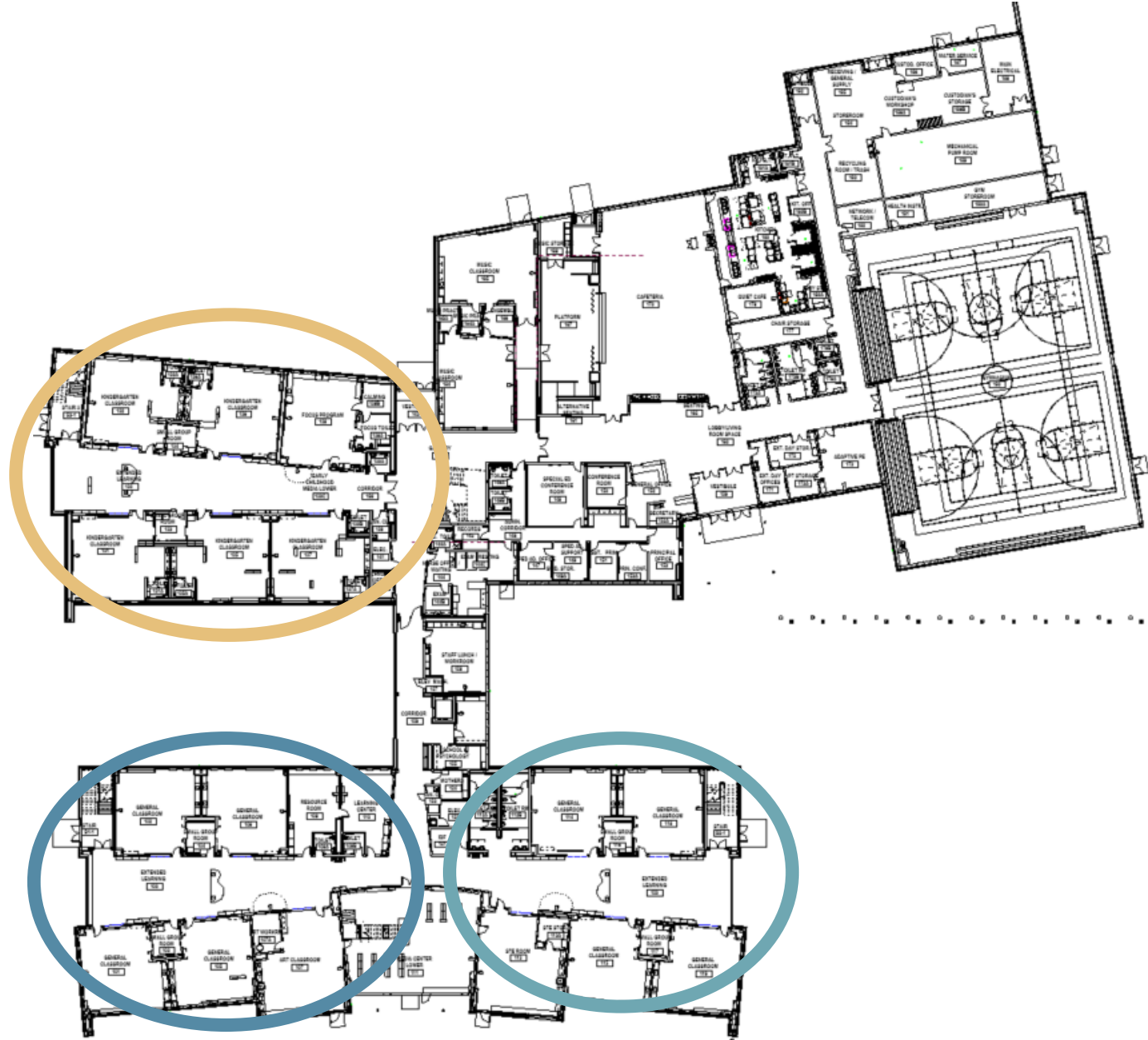
# Westwood: Hanlon-Deerfield Elementary School

## OVERALL 1<sup>ST</sup> FLOOR PLAN

B WING

A WING - WEST

A WING - EAST

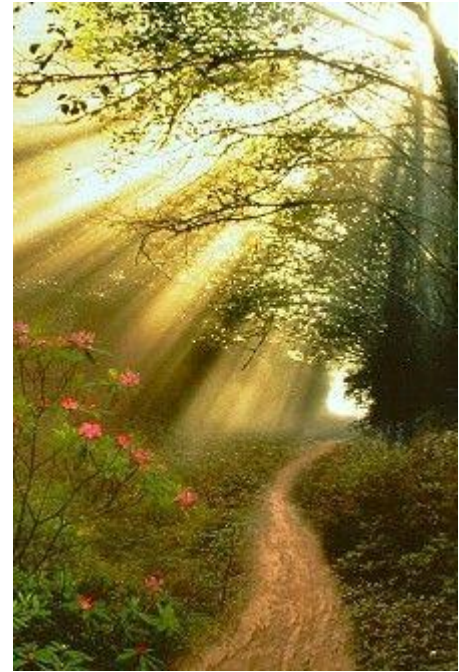
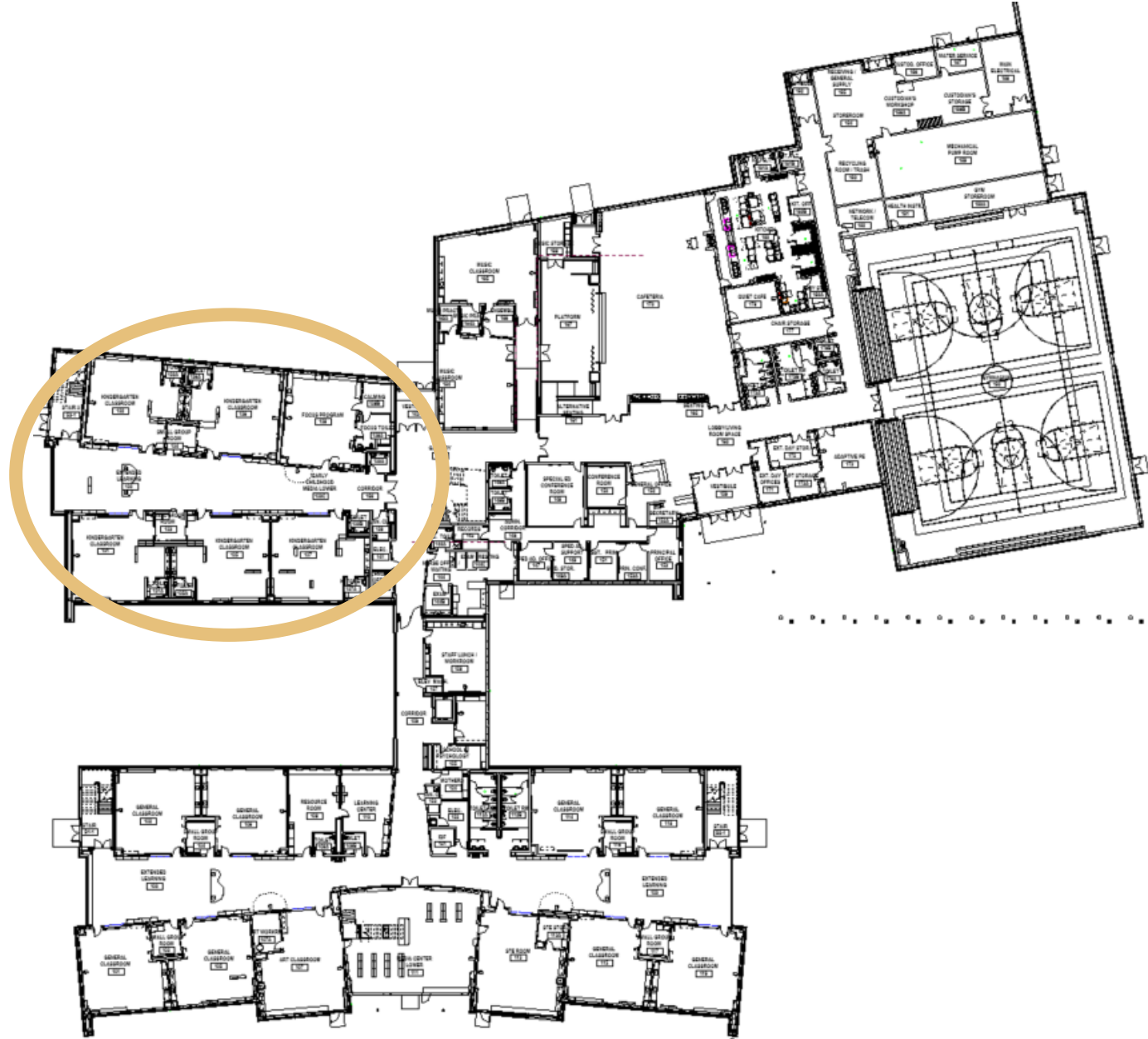




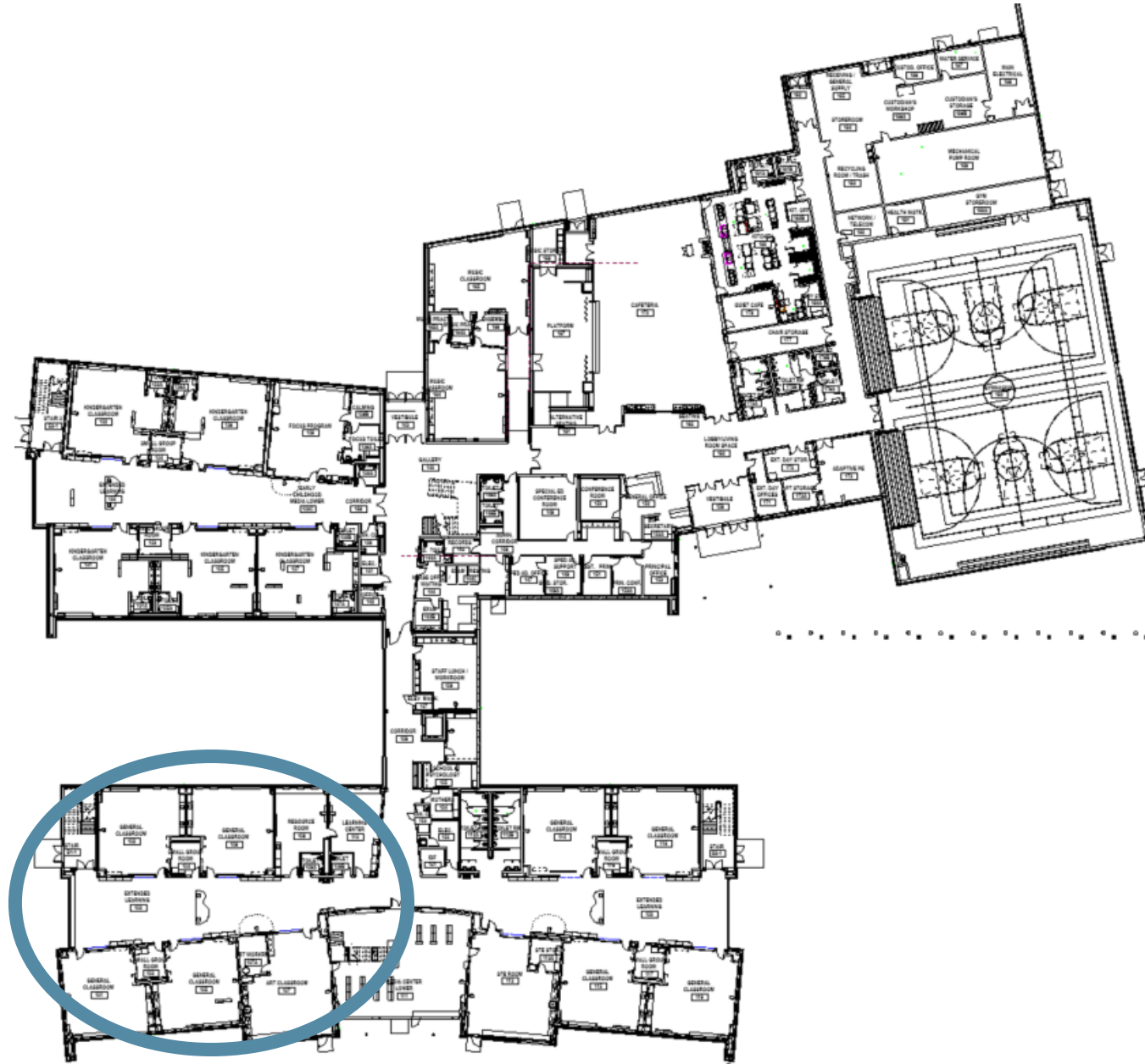
# Westwood: Hanlon-Deerfield Elementary School

## OVERALL 1<sup>ST</sup> FLOOR PLAN

B WING



A WING - WEST



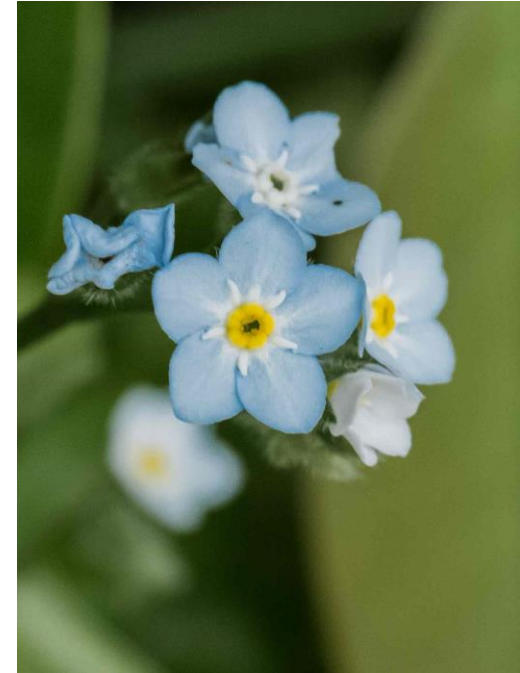
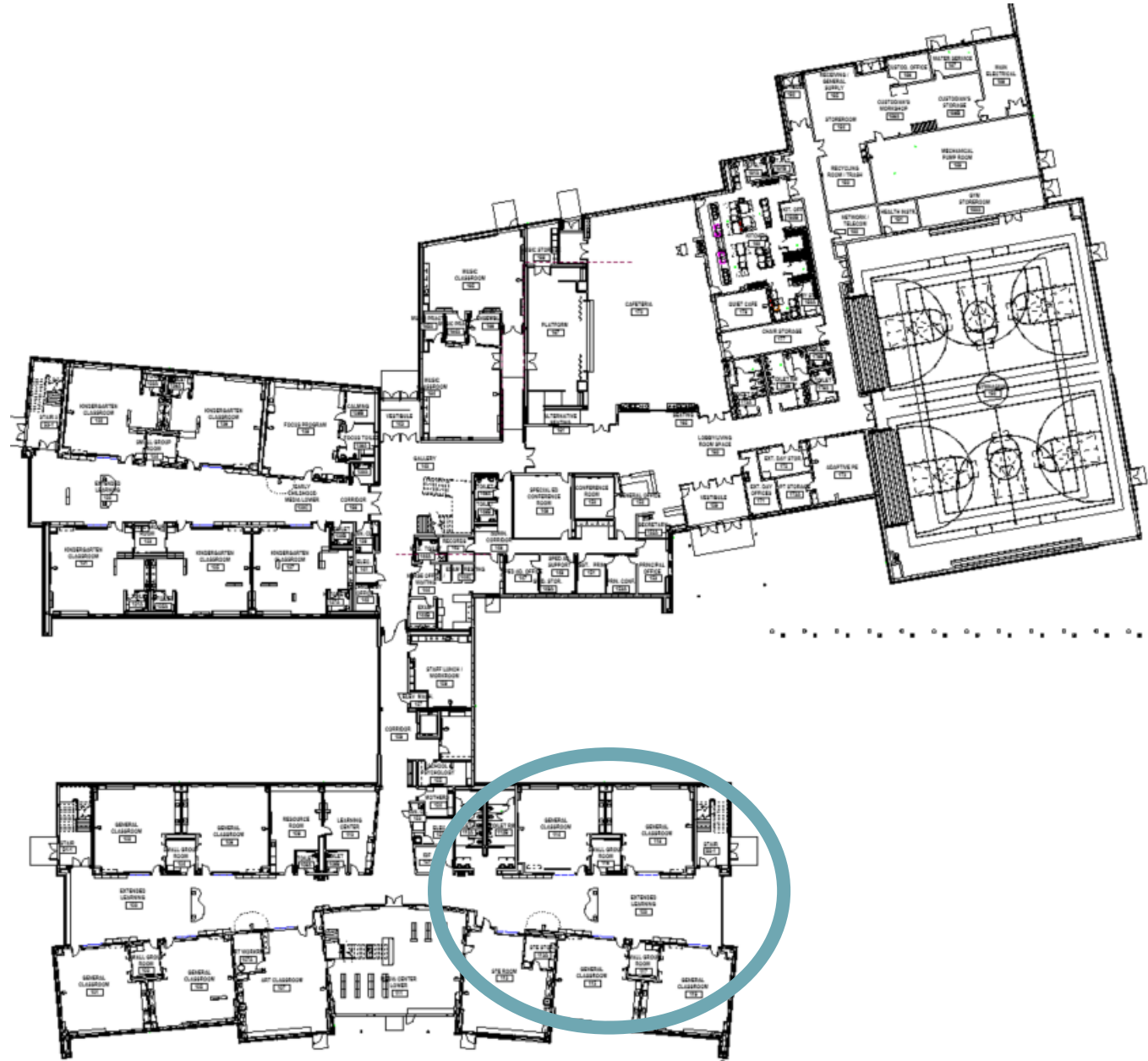


# Westwood: Hanlon-Deerfield Elementary School

## OVERALL 1<sup>ST</sup> FLOOR PLAN



A WING - EAST



# Westwood: Hanlon-Deerfield Elementary School

## OVERALL – B WING (Kindergarten + 1<sup>st</sup> Grade)

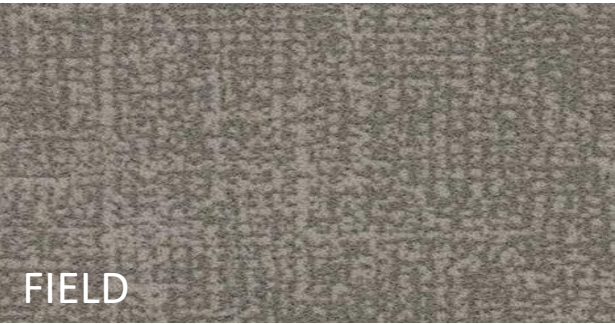
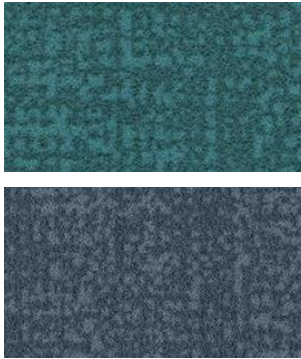
ACCENT WALL





# Westwood: Hanlon-Deerfield Elementary School

## B WING – TYPICAL CLASSROOM (Kindergarten + 1<sup>st</sup> Grade)



WINDOW SEAT

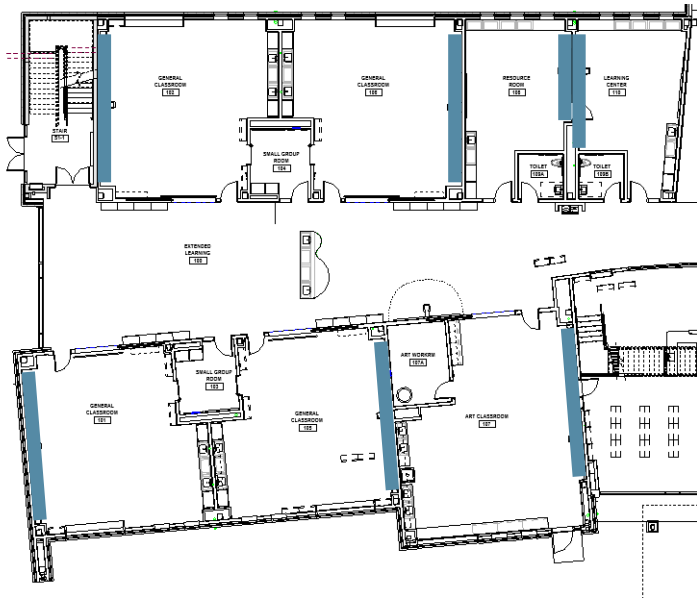


SINGLE USE BATHROOM

# Westwood: Hanlon-Deerfield Elementary School

## OVERALL – A WING WEST (2<sup>nd</sup> + 3<sup>rd</sup> Grade)

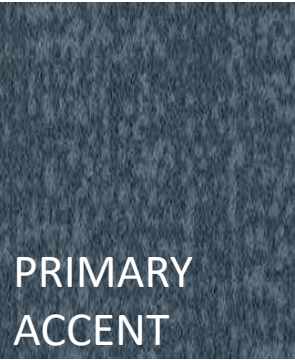
ACCENT WALL



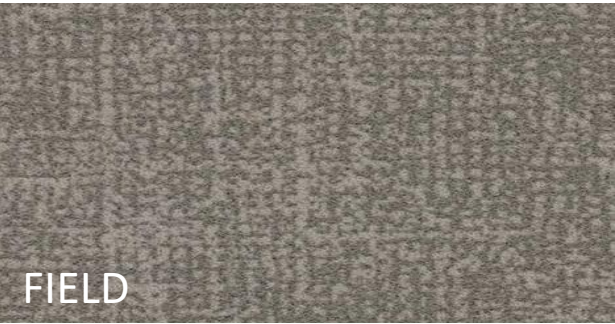
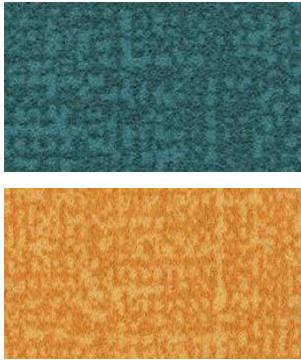


# Westwood: Hanlon-Deerfield Elementary School

## TYPICAL CLASSROOM – A WING WEST (2<sup>nd</sup> + 3<sup>rd</sup> Grade)



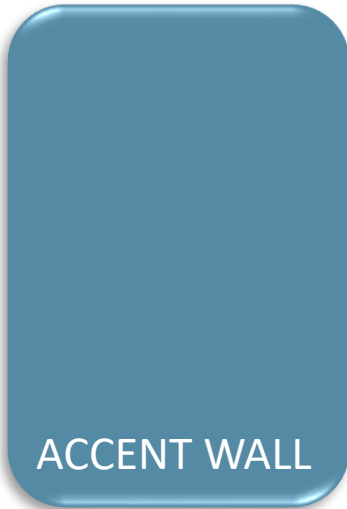
PRIMARY  
ACCENT



FIELD



WINDOW SEAT



ACCENT WALL



## Westwood: Hanlon-Deerfield Elementary School OVERALL – A WING EAST (4<sup>th</sup> + 5<sup>th</sup> Grade)

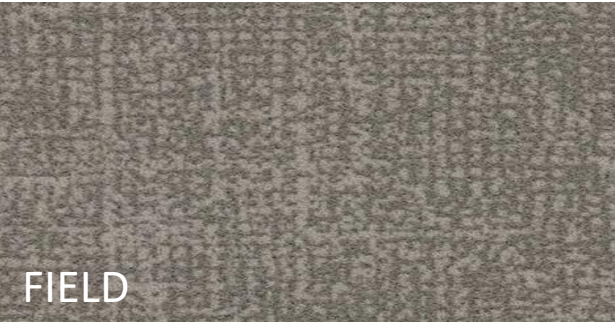
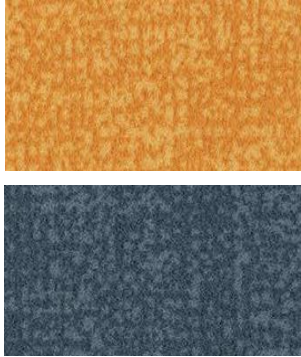
## Westwood: Hanlon-Deerfield Elementary School OVERALL – A WING EAST (4<sup>th</sup> + 5<sup>th</sup> Grade)





# Westwood: Hanlon-Deerfield Elementary School

## TYPICAL CLASSROOM – A WING EAST (4<sup>th</sup> + 5<sup>th</sup> Grade)

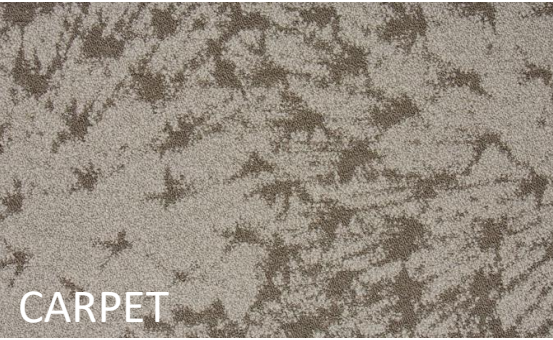


WINDOW SEAT

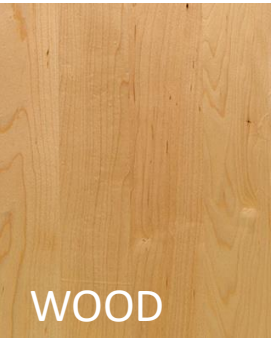


# Westwood: Hanlon-Deerfield Elementary School

## Administration Desk



CARPET



WOOD



CORIAN



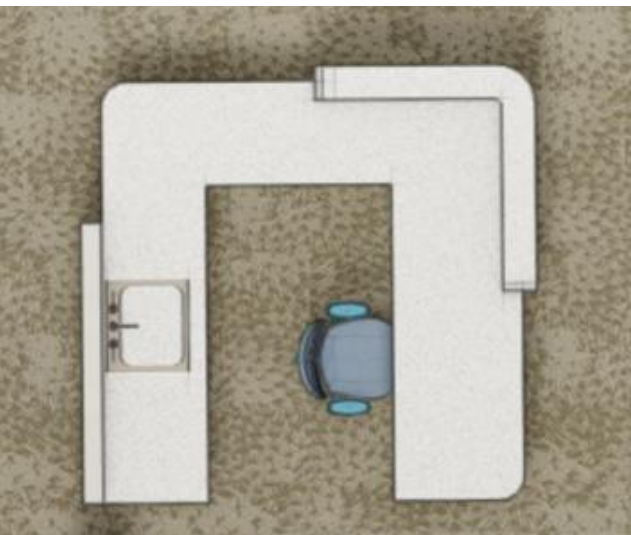
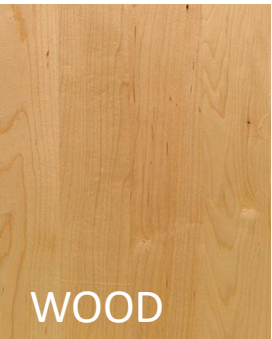
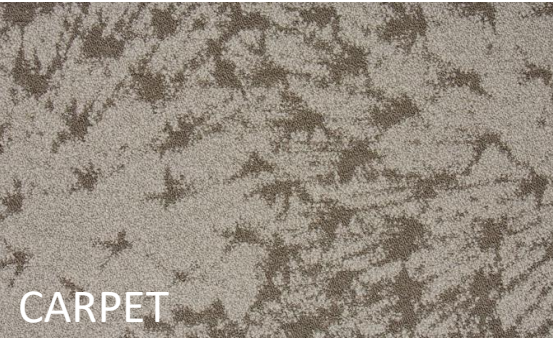
WALK-OFF  
CPT TILE





# Westwood: Hanlon-Deerfield Elementary School

## Circulation Desk





# Westwood: Hanlon-Deerfield Elementary School

## Railing System at Media Center

