

Westwood: Hanlon-Deerfield Elementary School

January 19th, 2022

Agenda

Updates

- Grade Level Colors
- Media Center Circulation Desk + Sink area
- Media Center Railing

Bathrooms

- Signage
- Colors/Design

Wayfinding Strategy

- A + B Wing
- Signage

Gallery Space



Westwood: Hanlon-Deerfield Elementary School Inspiration



Westwood: Hanlon-Deerfield Elementary School Overall – Trunk and Branches



Westwood: Hanlon-Deerfield Elementary School

OVERALL 1ST FLOOR PLAN

B WING

A WING - WEST

A WING - EAST



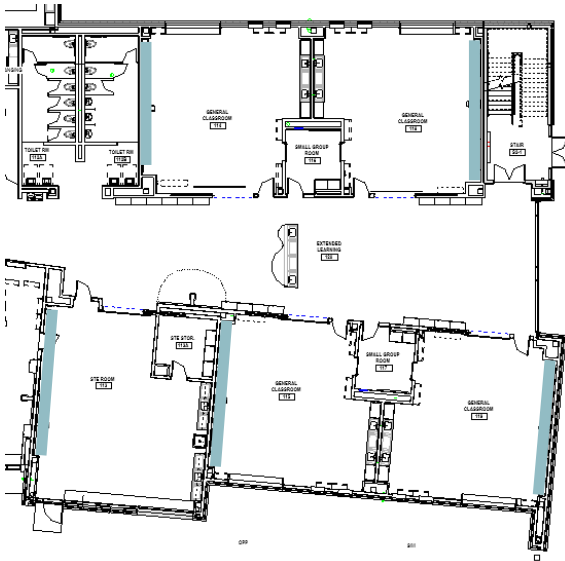
Westwood: Hanlon-Deerfield Elementary School OVERALL – B WING (Kindergarten + 1st Grade)

ACCENT WALL



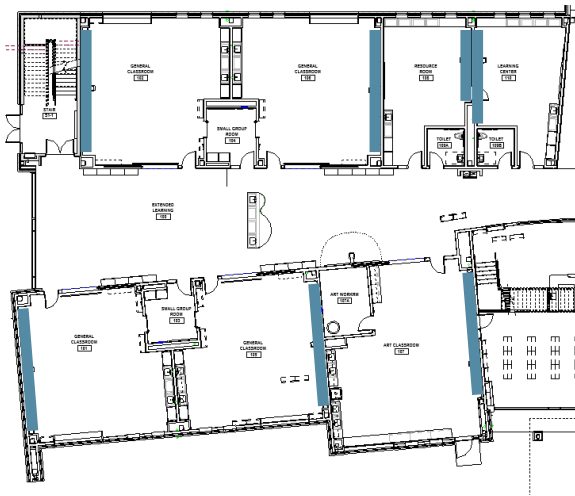
OVERALL – A WING WEST (2nd + 3rd Grade)

ACCENT WALL

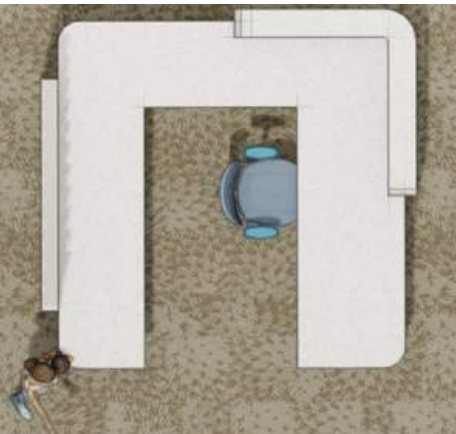
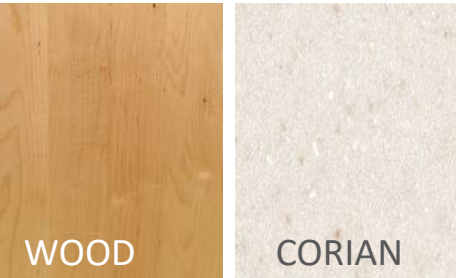
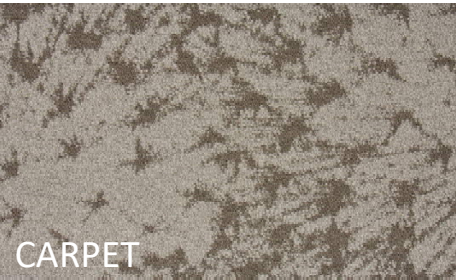


Westwood: Hanlon-Deerfield Elementary School OVERALL – A WING EAST (4th + 5th Grade)

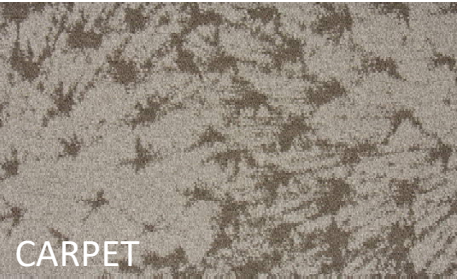
ACCENT WALL



Westwood: Hanlon-Deerfield Elementary School Circulation Desk



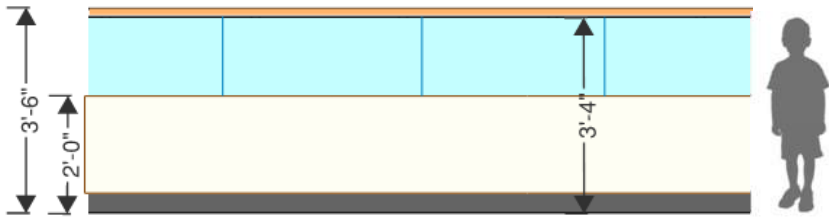
Westwood: Hanlon-Deerfield Elementary School
Sink Location



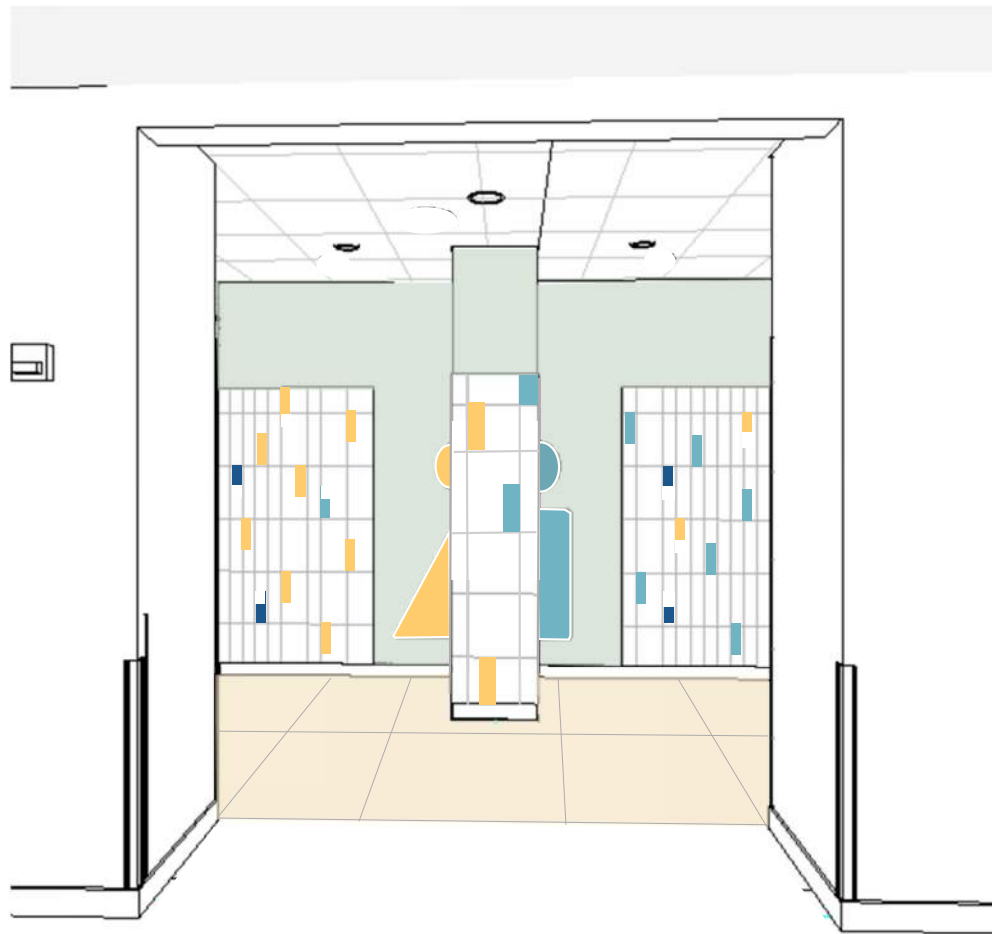
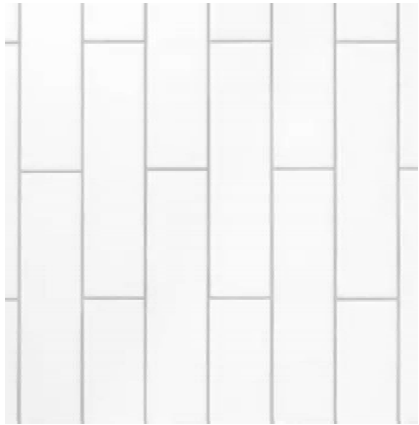
Westwood: Hanlon-Deerfield Elementary School Railing System at Media Center



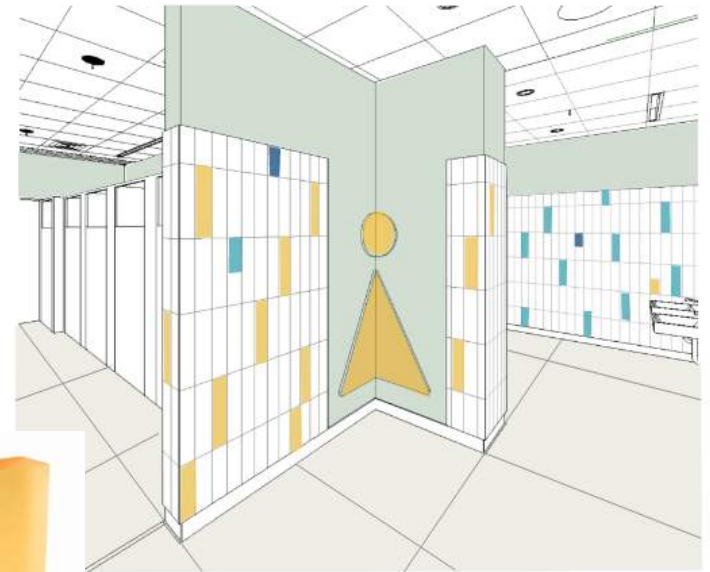
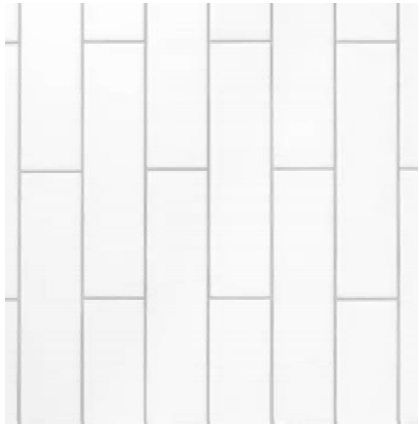
Westwood: Hanlon-Deerfield Elementary School Railing System at Media Center – Alternate Option



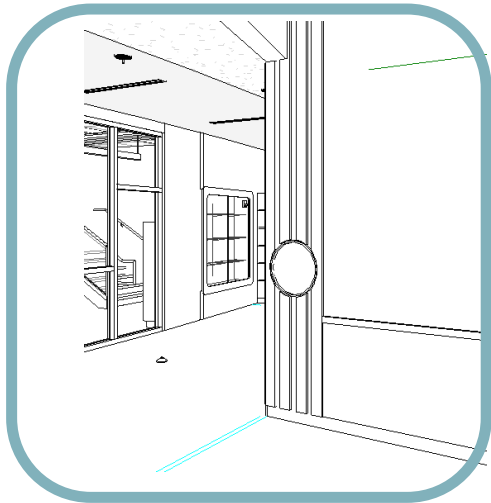
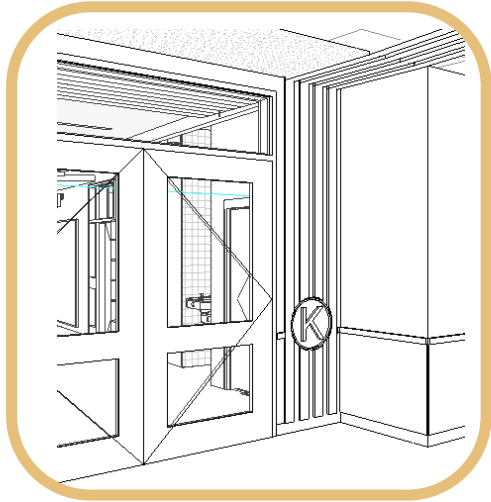
Westwood: Hanlon-Deerfield Elementary School Bathroom - Typical



Westwood: Hanlon-Deerfield Elementary School Bathroom - Typical

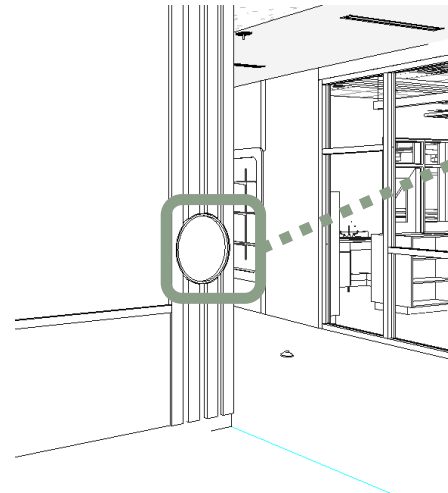
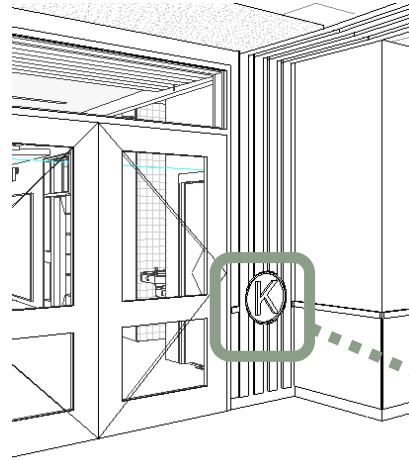
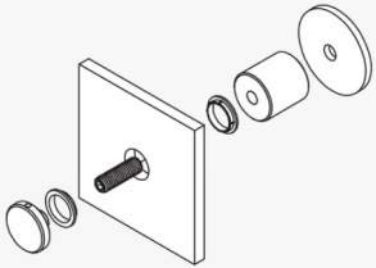


Westwood: Hanlon-Deerfield Elementary School Wayfinding



Westwood: Hanlon-Deerfield Elementary School Wayfinding

Point Support
Standard 1" Cap Style



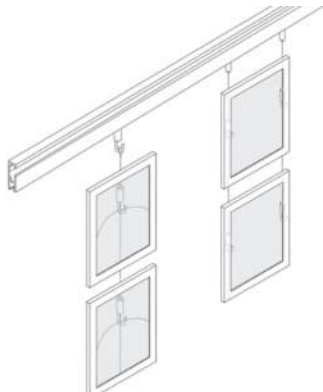
Westwood: Hanlon-Deerfield Elementary School Gallery Space

FLOOR

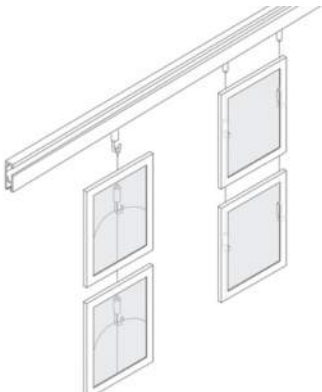
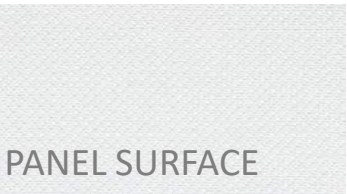
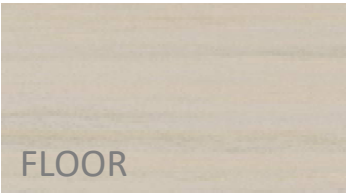
TACK
SURFACE

WOOD TRIM

PANEL SURFACE



Westwood: Hanlon-Deerfield Elementary School
Gallery Space





Thank You