



Hanlon – Deerfield Elementary School Project
School Building Committee Meeting
4 March 2022



Topics for Review

1. Playground: review and confirm base bid or alternate
2. Shading Element (east side)
3. Order of Alternates
4. Schedule: Look Ahead

Meeting Objective:

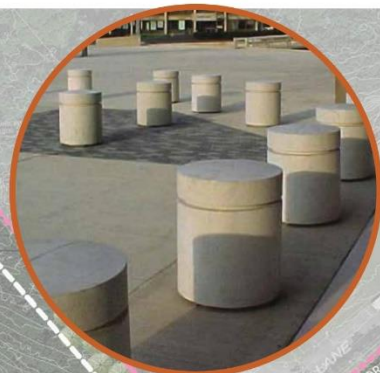
Confirm List of Alternates and Determine Order



Westwood Hanlon Elementary School



CHIRP BIRDHOUSE 'DENARI'



PRECAST CONCRETE BOLLARD



LANDSCAPE FORM 'TRAPECIO' BENCH



LANDSCAPE FORM 'TRAPECIO' BENCH



MADRAX 'GENESIS' BIKE RACK



LANDSCAPE FORMS 'RING' BIKE RACK



RAINGARDEN INTERPRETIVE SIGNAGE



LANDSCAPE FORMS 'FGP' LITTER RECEPTACLE

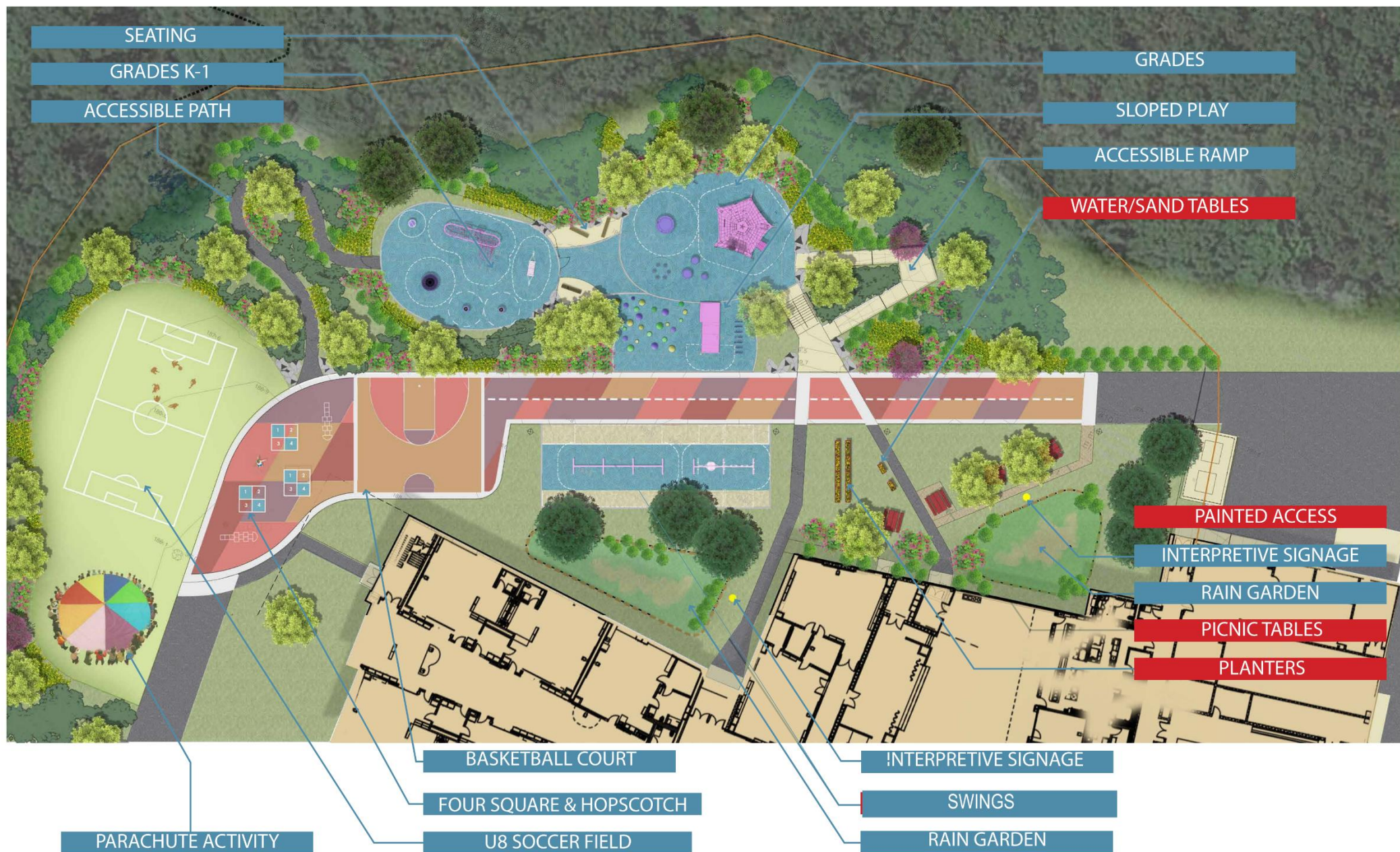


LANDSCAPE FORMS 'HARVEST' TABLE

THE **5** ELEMENTS OF PLAY



PlayCore's Elements of Inclusive Play, 2015
<http://www.inclusiveplaygrounds.org/me2/playability>





HAMMOCK

EMPEROR CHIMES

SCREAM TALK TUBES

SUPER NOVA



WHIRLWIND TALL SPINNER



UNIVERSAL CAROUSEL



GORIC DISH



SENSORY DOME



EMBANKMENT SLIDE



EUROFLEX HALF BALLS



EUROFLEX HALF BALLS



WHALE DRUMS



CLIMBING HOOPS



SUPER NOVA



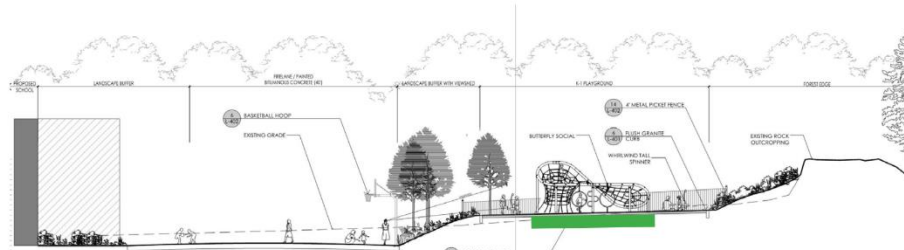
EMPEROR CHIMES



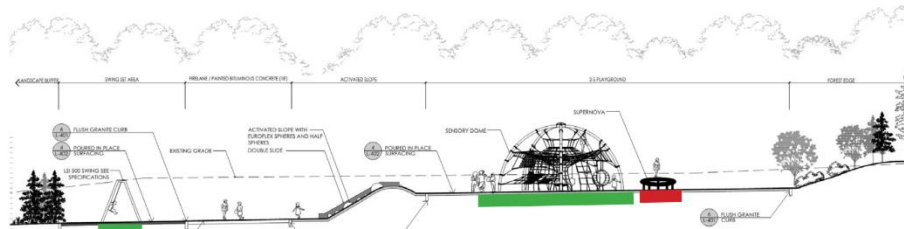
GORIC DISH



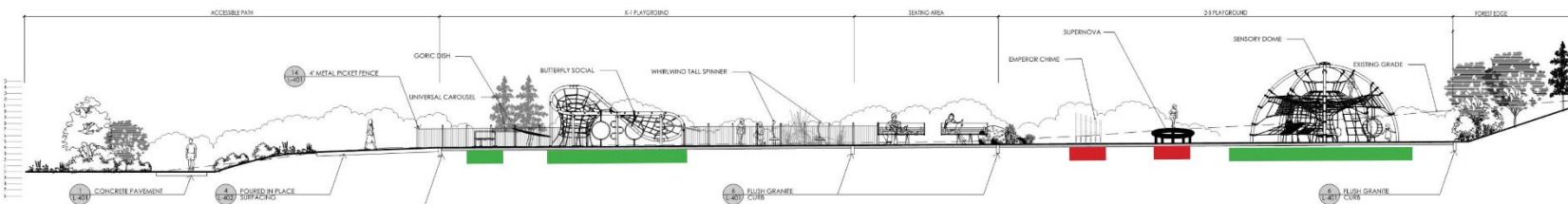
SENSORY DOME



SECTION THROUGH K-1 PLAY AREA - NORTH/SOUTH



SECTION THROUGH 2-5 PLAY AREA - NORTH/SOUTH



LONGITUDINAL SECTION THROUGH ENTIRE PLAYGROUND - EAST/WEST



KOMPAN SWINGS



BUTTERFLY SOCIAL



UNIVERSAL CAROUSEL



Westwood Hanlon Elementary School

all other play





3. Current Appearance: East End of Classroom Wing Shown



3. Potential Appearance after Value Management: East End of Classroom Wing Shown





3. Current Appearance: East End of Classroom Wing Shown



3. Potential Appearance after Value Management: East End of Classroom Wing

Construction Cost Management

RECAP from 2/11/22: Option: Convert base bid items to new alternates.

SCOPE to convert to alternates	Estimated Cost Reduction*
Landscape boulders and site furnishings: raised gardens, sand/water tables, benches, picnic tables, etc.	\$ (102,332)
Playground equipment TBD**	TBD
Chain link fencing around field	\$ (65,000)
Subtotal	\$ (167,332)

Previously identified alternates (above \$70.3M base bid)

Add UV to HVAC	\$ 93,235
Add Phase 2 Landscape plantings	\$ 245,456
Subtotal	\$ 338,691

** D&W presenting updated playground information

Construction Cost Management

Bid Alternates:

List of approved alternates	Estimated Cost
Add UV to HVAC	\$ 93,235
Chain link fencing around field	\$ 65,000
Landscape boulders and site furnishings: raised gardens, sand/water tables, benches, picnic tables, etc.	\$ 102,332
Add Phase 2 Landscape plantings	\$ 245,456
Other potential alternates	Estimated Cost
Playground equipment TBD**	TBD

** D&W presenting updated playground information

2022: 7 Month Look-Ahead

January	February	March	April	May	June	July
<ul style="list-style-type: none">• 1/21 (SBC): Review 60% CD Cost Estimates	<ul style="list-style-type: none">• 2/11 (SBC): Review value engineering and Alternate options and values• 2/28: Submit for 90% CD Cost Estimate	<ul style="list-style-type: none">• 3/4 (SBC): Determine order of Alternates• 3/18: Receive 90% CD Cost Estimate Results	<ul style="list-style-type: none">• 4/1 (SBC): Determine Construction Cost Management Strategy• Authorize 90% CD Submission to MSBA	<ul style="list-style-type: none">• 5/13 (PBC/SBC) Authorize 100% CD submission to MSBA and Out to Bid• 5/18: Submit Bid Set	<ul style="list-style-type: none">• 6/10 (PBC/SBC)	<ul style="list-style-type: none">• Bid Opening; PBC awards the contract

Questions, Comments, Reactions

