



Hanlon – Deerfield Elementary School Project

School Building Committee Meeting

21 January 2022



Topics for Review

Project Update

- a. Cost Estimate
- b. Interior Design
- c. Permitting

Cost Estimates:
60% Construction Documents (CD)

Current Project Construction Budget: \$70,380,680

Estimator:	Cost Estimate:	Difference to Budget:
Miyakoda	\$70,358,748	(\$21,932)
PMC	\$70,362,256	(\$18,424)



Construction Cost Management

Construction Budget: \$70.362M

Current:

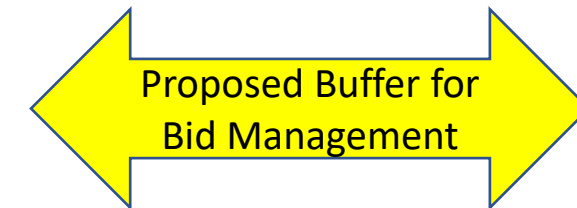


Proposed:



Options to Create Buffer:

- Convert Base Bid elements to Alternates
- Value engineer current Base Bid
- Decrease contingency and/or soft costs (i.e FFE)

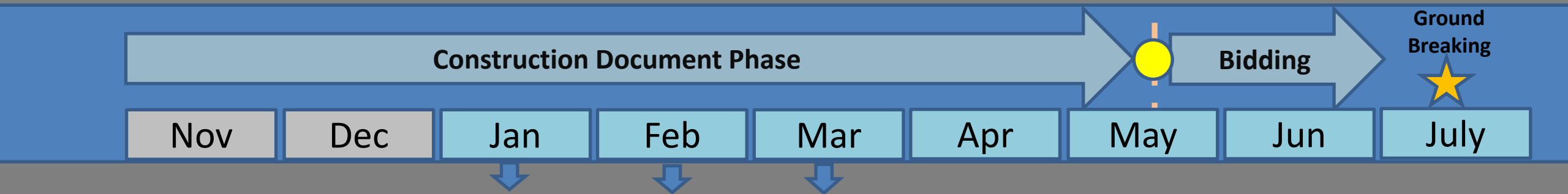


2022: 7 Month Look-Ahead

January	February	March	April	May	June	July
<ul style="list-style-type: none"> • 1/21 (SBC): Review 60% CD Cost Estimates 	<ul style="list-style-type: none"> • 2/11 (SBC): Review value engineering and Alternate options and values • 2/28: Submit for 90% CD Cost Estimate 	<ul style="list-style-type: none"> • 3/4 (SBC): Determine order of Alternates • 3/18: Receive 90% CD Cost Estimate Results • 3/25: (TBD) <i>SBC Meeting to authorize submission to MSBA?</i> 	<ul style="list-style-type: none"> • 4/1 (SBC): Determine Construction Cost Management Strategy • PBC approves Bid Set Documents 	<ul style="list-style-type: none"> • 5/13 (SBC) • 5/18: Submit Bid Set 	<ul style="list-style-type: none"> • 6/10 (SBC) 	<ul style="list-style-type: none"> • Bid Opening; PBC accepts Alternates



Construction Document Phase: Work Plan



Three Month Look Ahead

January

Jan 12: Receive 60% cost estimates
Jan 12: Conservation Committee
Cont. Hearing
Jan 24: Submit 60% CD to MSBA
Jan 25-27: User Group Mtgs Rnd 3
Room Data Sheet Review
and sign off

February

Feb 15: Receive MSBA response.
Feb 16-30: D+W response to MSBA
Feb 1-28: Finalize GC + Sub
Prequal Documents

March

Mar 1-31: GC + Sub Prequal
Mar 28: Submit 90% CD to MSBA

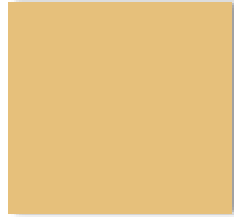
Interior Design Update

Aesthetics and Design Subcommittee Review

- Inspiration
- Color Scheme + Organization
- Wayfinding
- Admin Lobby and Media Center updates
- Bathrooms
- Gallery

Westwood: Hanlon-Deerfield Elementary School

INSPIRATION



Westwood: Hanlon-Deerfield Elementary School

OVERALL TRUNK and BRANCHES

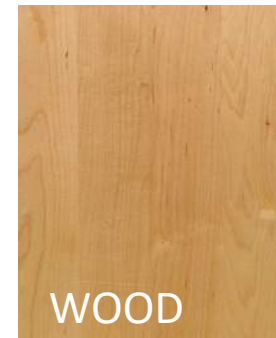
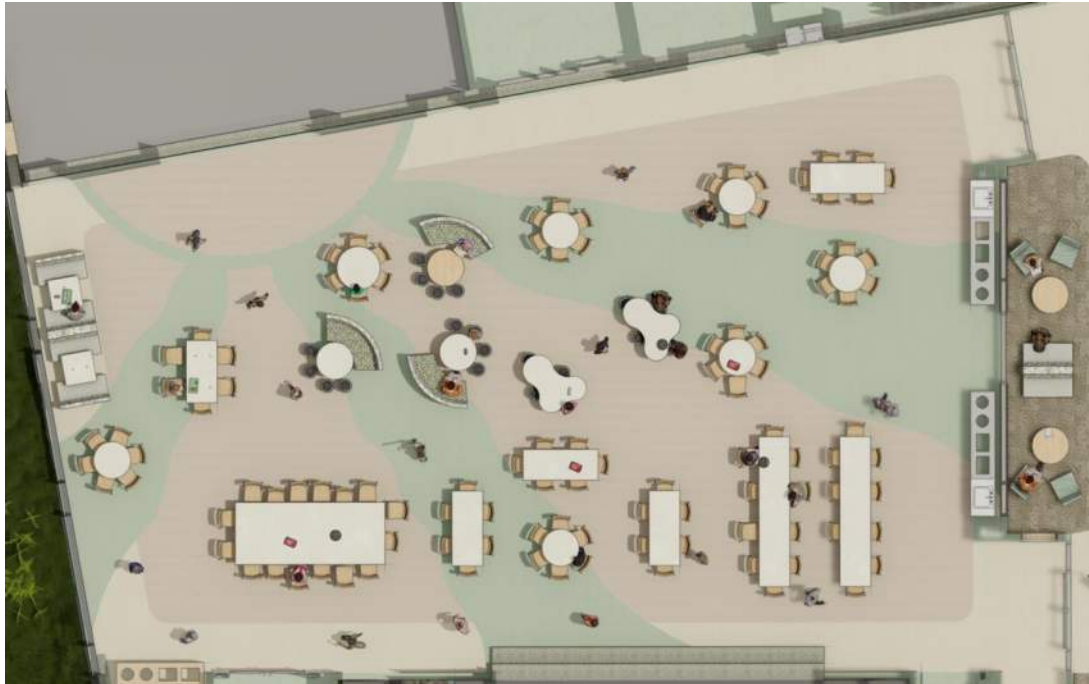


Westwood: Hanlon-Deerfield Elementary School

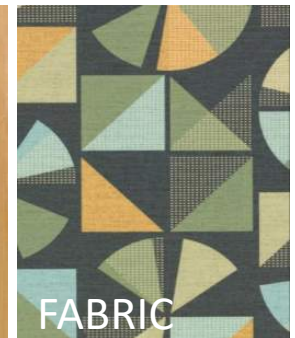
CAFETERIA



FLOORING



WOOD



FABRIC



FABRIC

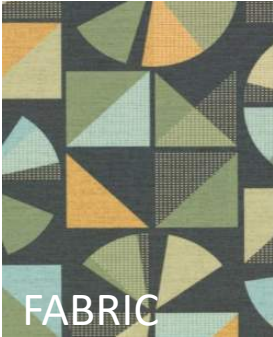
Westwood: Hanlon-Deerfield Elementary School
EXTENDED LEARNING AREAS



FLOORING



WOOD



FABRIC



FABRIC

OVERALL 1ST FLOOR PLAN

B WING

A WING - WEST

A WING - EAST



Westwood: Hanlon-Deerfield Elementary School

OVERALL – B WING (Kindergarten + 1st Grade)

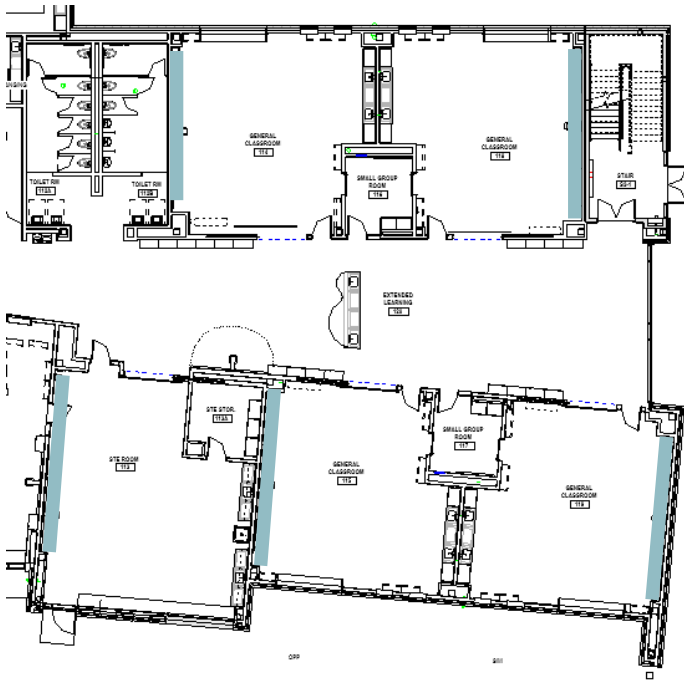
ACCENT WALL



Westwood: Hanlon-Deerfield Elementary School

OVERALL – A WING WEST (2nd + 3rd Grade)

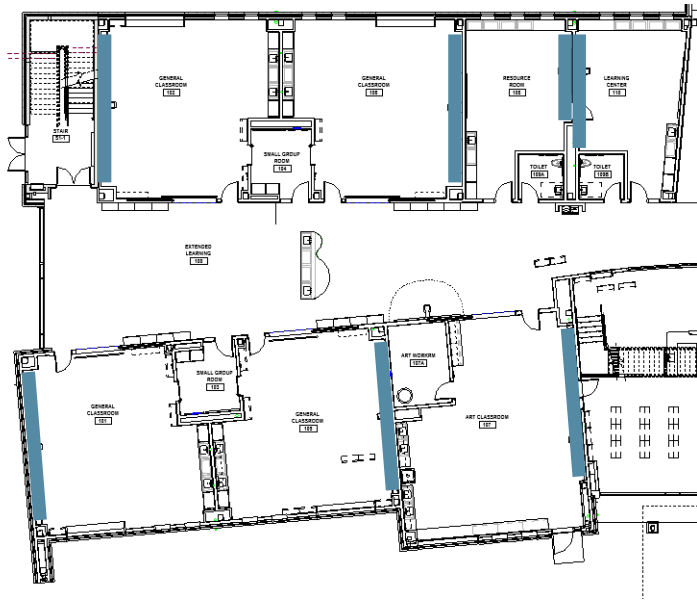
ACCENT WALL

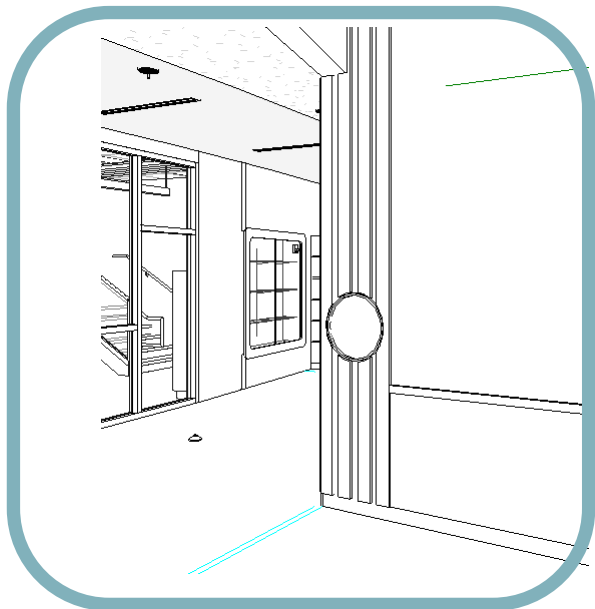
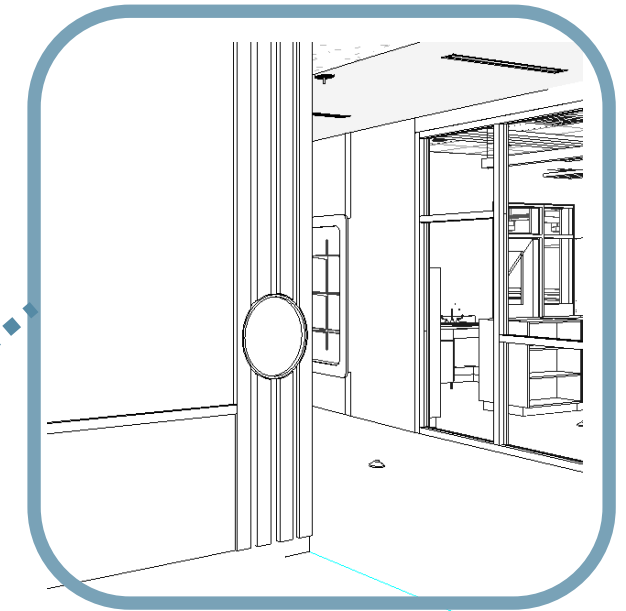
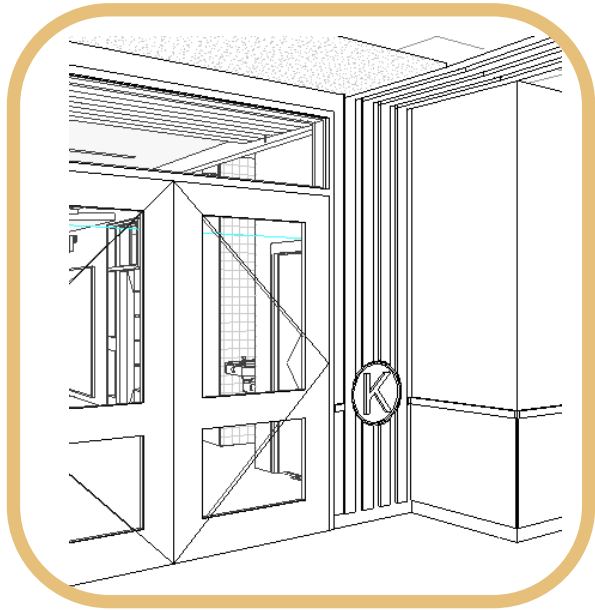


Westwood: Hanlon-Deerfield Elementary School

OVERALL – A WING EAST (4th + 5th Grade)

ACCENT WALL

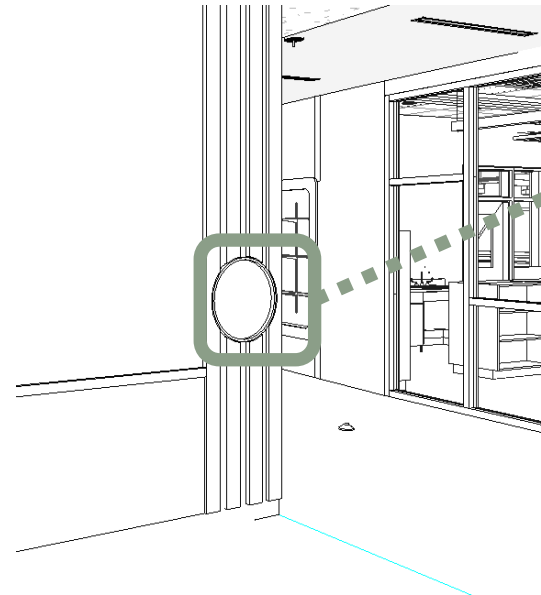
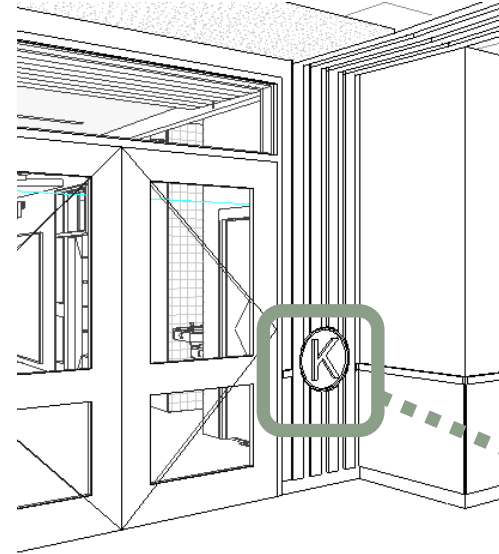
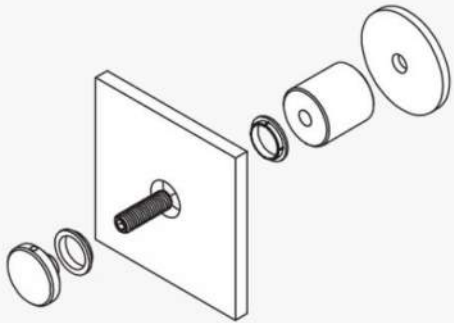




WAYFINDING

Point Support

Standard 1" Cap Style





SINGLE USE BATHROOM

ADMINISTRATION DESK



CARPET



WOOD



CORIAN

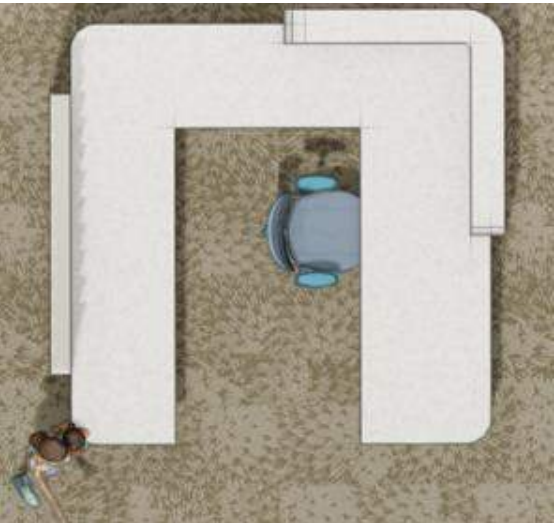
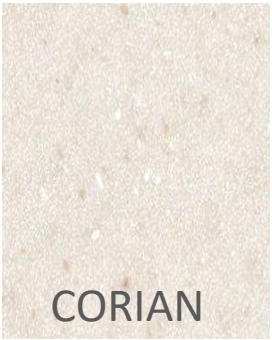
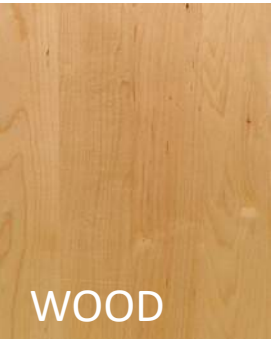


WALK-OFF
CPT TILE

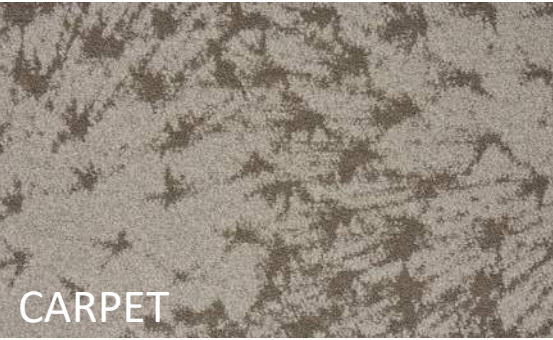


Westwood: Hanlon-Deerfield Elementary School

CIRCULATION DESK



SINK LOCATION

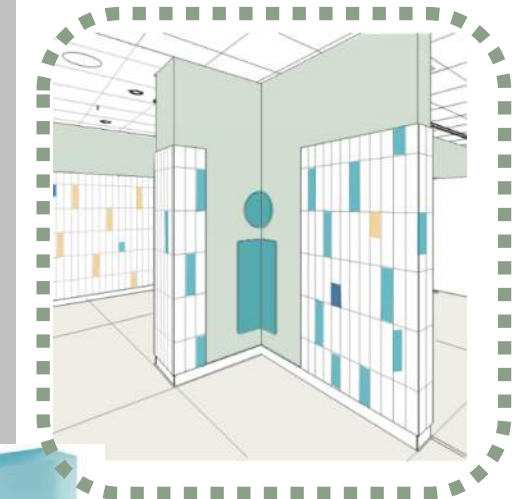
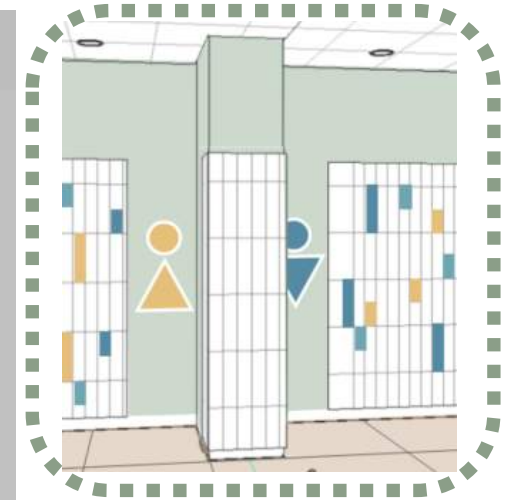
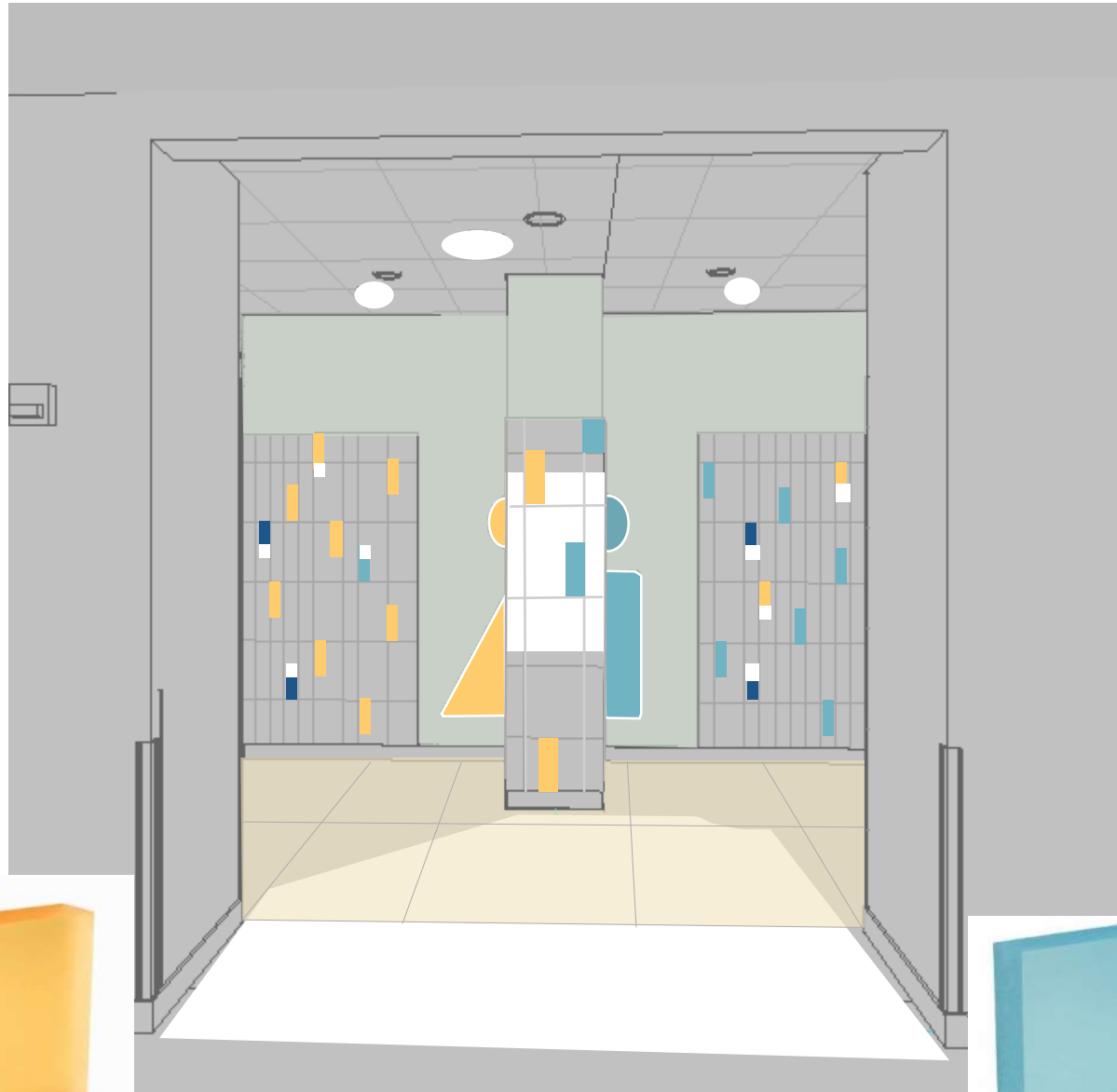
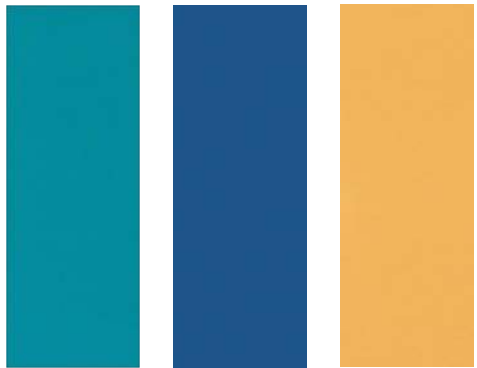
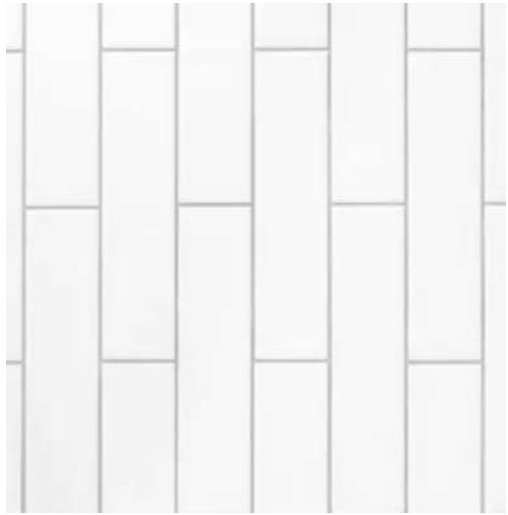


Westwood: Hanlon-Deerfield Elementary School

RAILING SYSTEM AT MEDIA CENTER

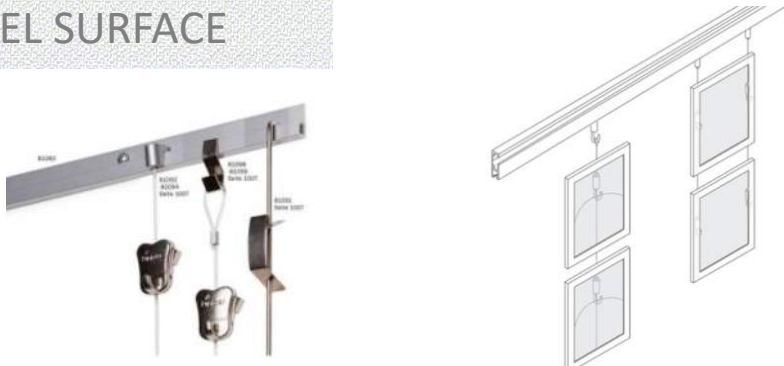


MULTI-STALL TOILET ROOMS

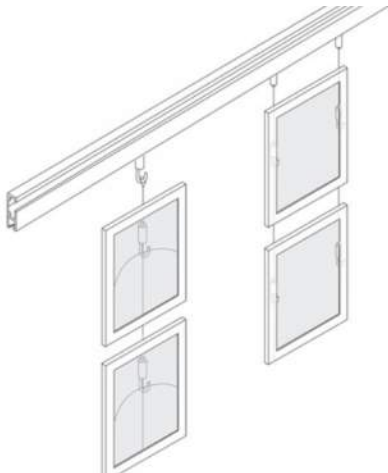


Westwood: Hanlon-Deerfield Elementary School

GALLERY SPACE



GALLERY SPACE



Aesthetics + Design Subcommittee Summary



Recommend accepting D+W proposed finishes, color scheme, organization, and wayfinding, as well as the glass railing at the library mezzanine, as presented, with exceptions noted below:

- a. At multi-stall toilet rooms: D+W will return with alternate pattern for wall tiles and alternate solution for boy/girl designation. Will provide examples from other schools.
- b. School district will advise on tackable height at gallery.

Permitting Update

Planning Board and Conservation Commission

- Received Approval from Planning Board and Conservation Commission
 - a. Three Planning Board Hearings
 - b. Two Conservation Commission Hearings

PREVIOUS SITE PLAN



Site Plan

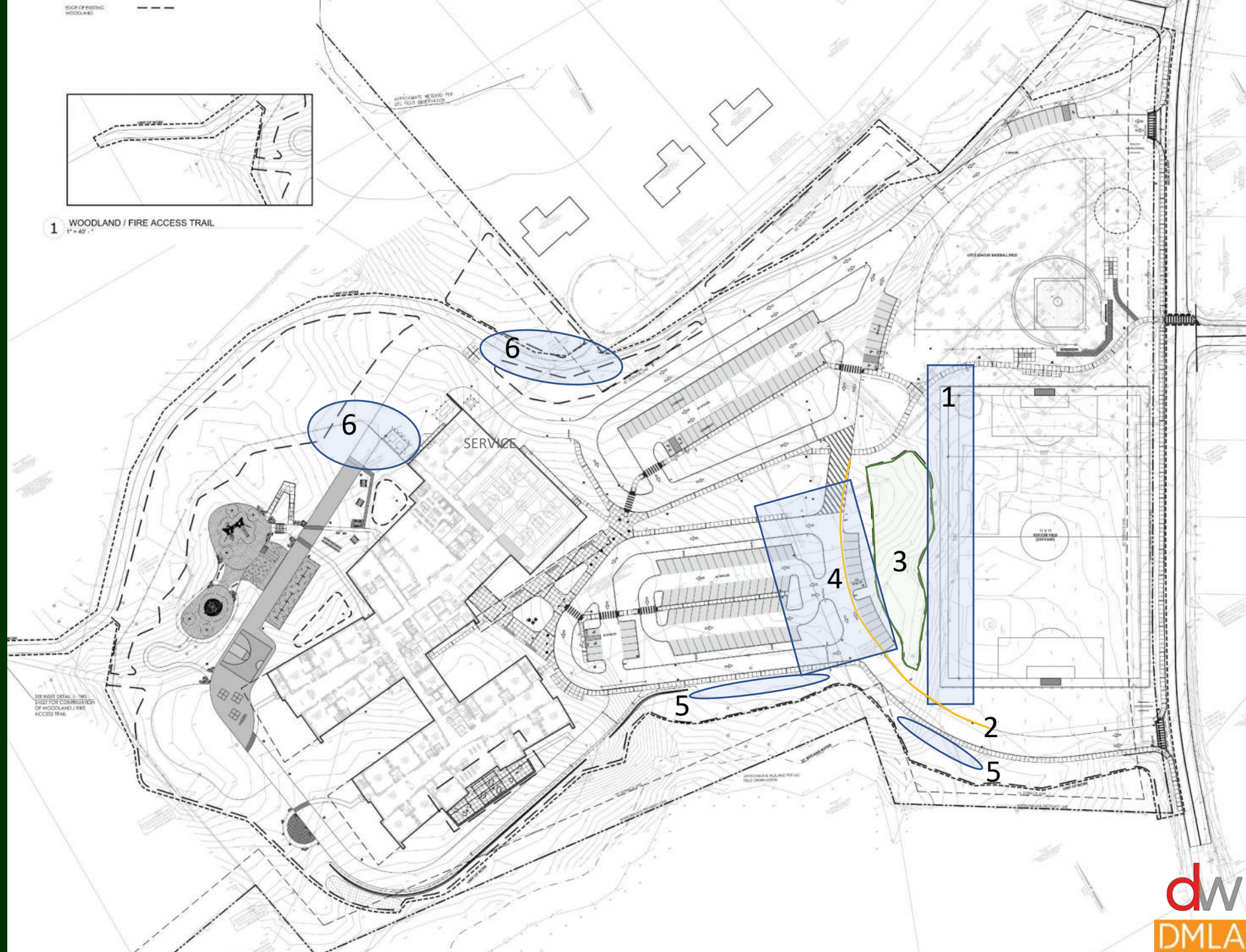
113,141 sf building, 18.5 acres +/-

LANDSCAPING UPDATES

1. Multi-Use Playfield widened from 210' to 225' (5 yds wider)
2. Southern entry road extended to accommodate soccer
3. Larger group of existing trees to remain
4. Slight modification to parking
5. Eliminated retaining wall along southern drive
6. Revised fencing and landscaping at service area

Site Plan

113,141 sf building, 18.5 acres +/-

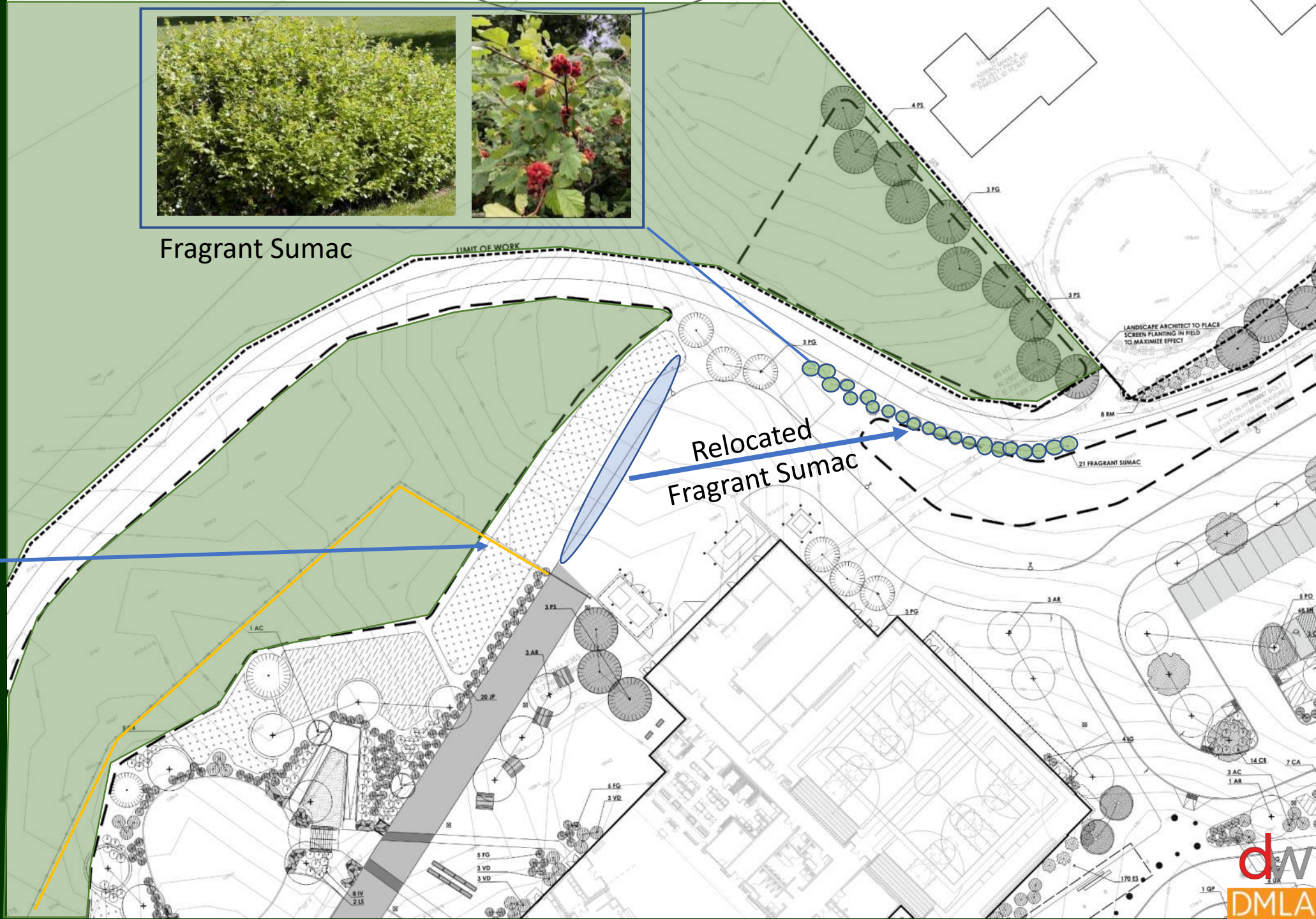


LANDSCAPING UPDATES

- Relocated Landscape to provide natural boundary for fire access trail
- Adjusted fencing to align with gate at fire access road



Fragrant Sumac



Grading Plan

Southeast Corner

Grading Plan
Southeast Corner

35' WETLAND BUFFER

LIMIT OF WORK

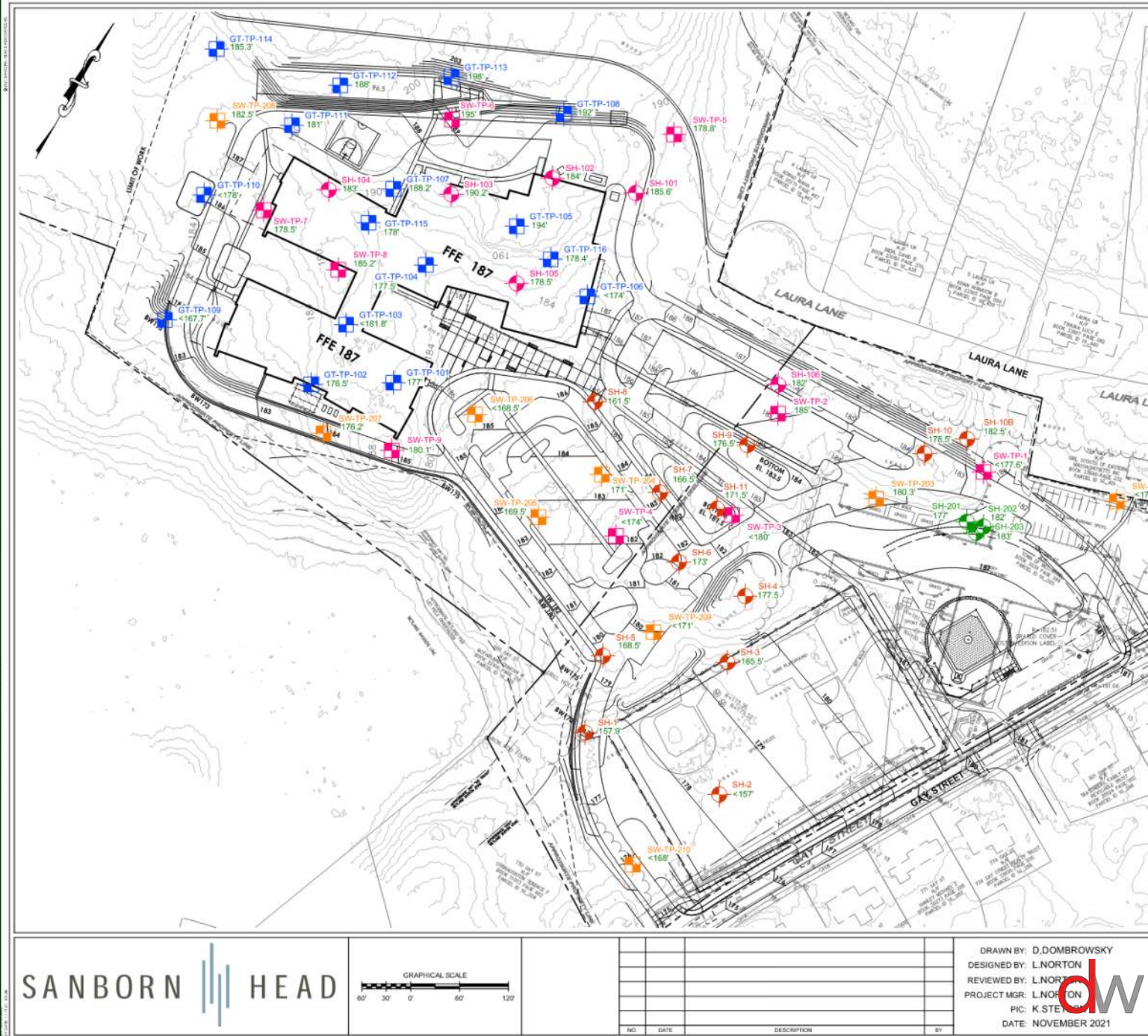
dw
DMLA

ANR PLAN

Proposed delineation for Care Custody and Control boundary for ANR Plan to be prepared.
Green shaded area indicates Westwood Public School District

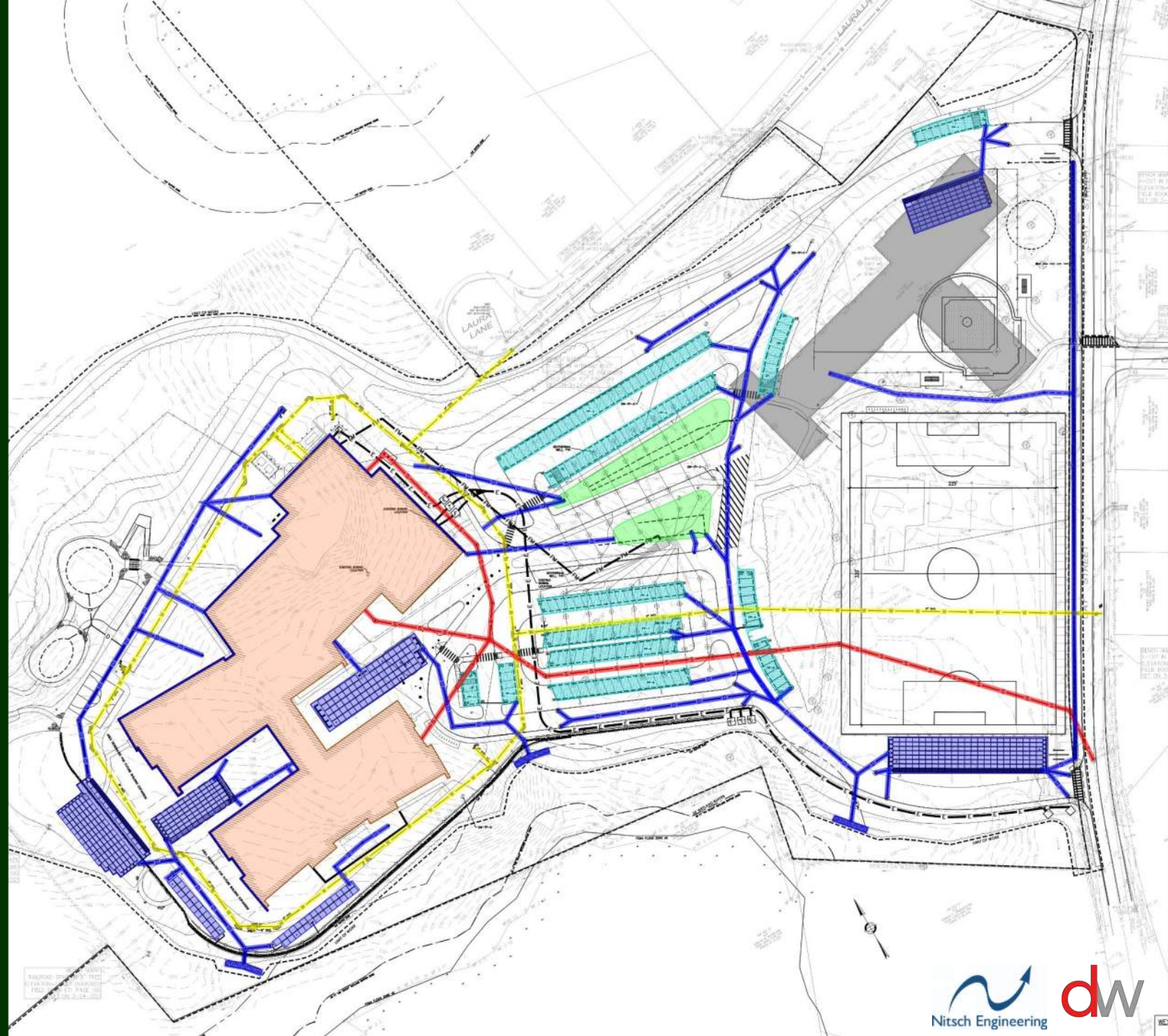


- Additional Test pits completed



STORMWATER UPDATE SUMMARY

- Additional Test pits completed
- Relocated stormwater galleries from north of building to west side
- Updated stormwater calculations and report accordingly
- Updated HydroCAD model
- Revised plans to address items noted in BETA review comments and Landscape revisions
- Provided Dewatering Specifications



Questions, Comments, Reactions

