

Westwood Public Schools
Hanlon Elementary School
Building Project
Community Forum
10.13.2020

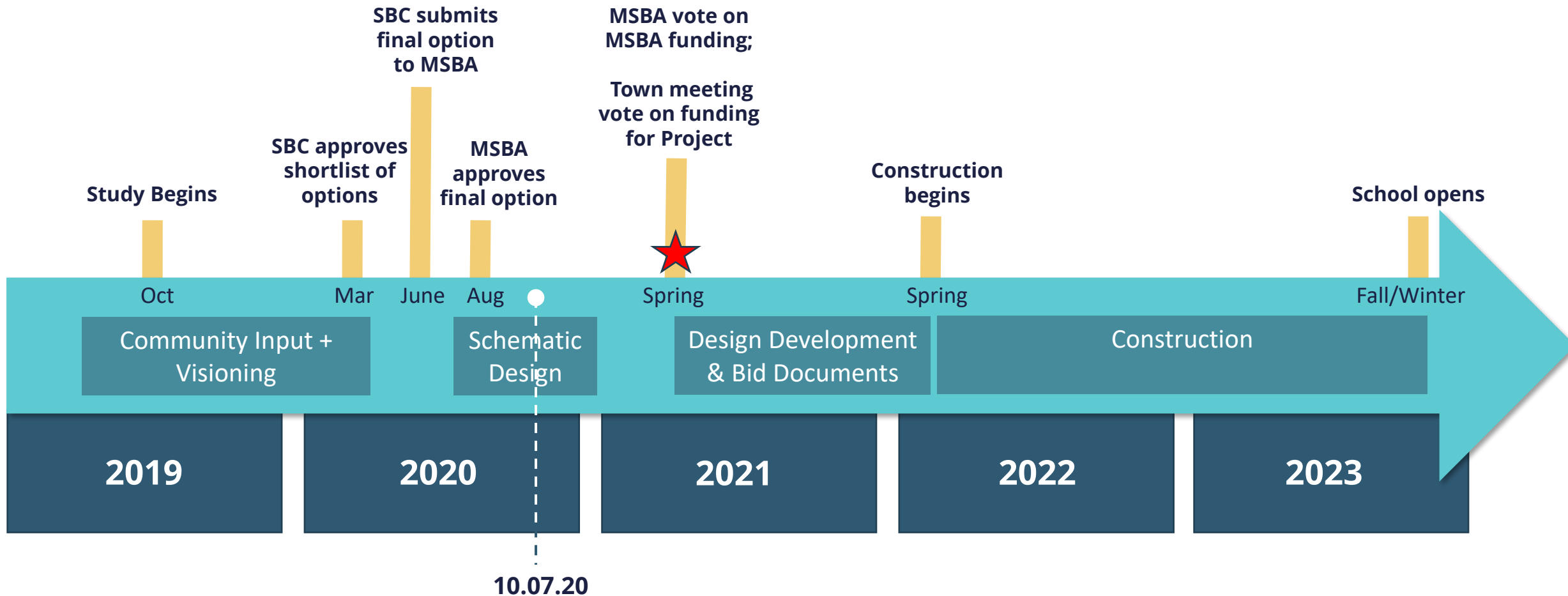


Agenda

- **Project Overview**
- **Community Context and Design Approach**
- **Site Plan and Floor Plans**
- **Sustainability**
- **Exterior Model (in progress)**
- **Next Steps**
- **Public Participation and Q&A**

School Building Project

Process Update / Overview



Existing Conditions

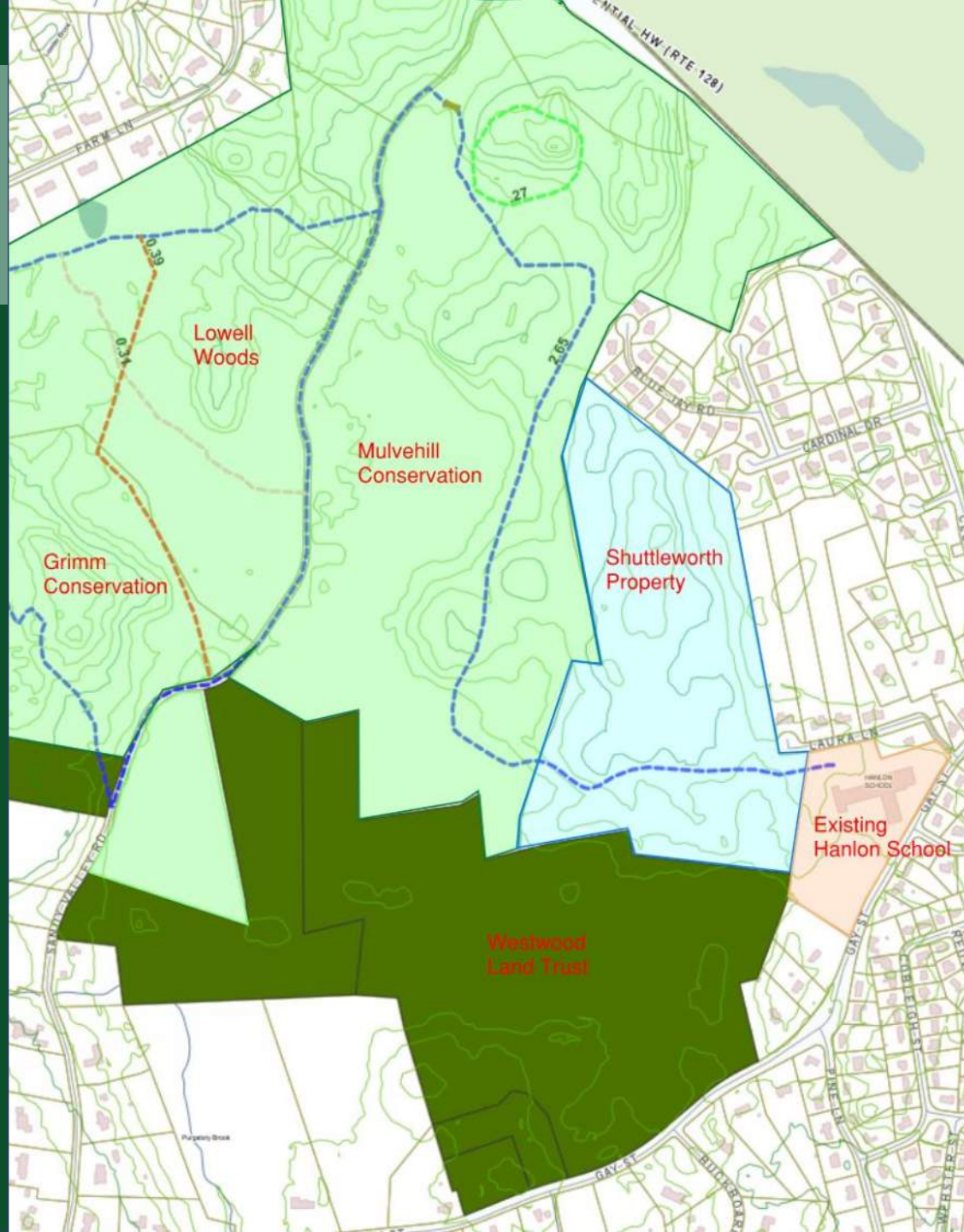
Hanlon Elementary School - Site



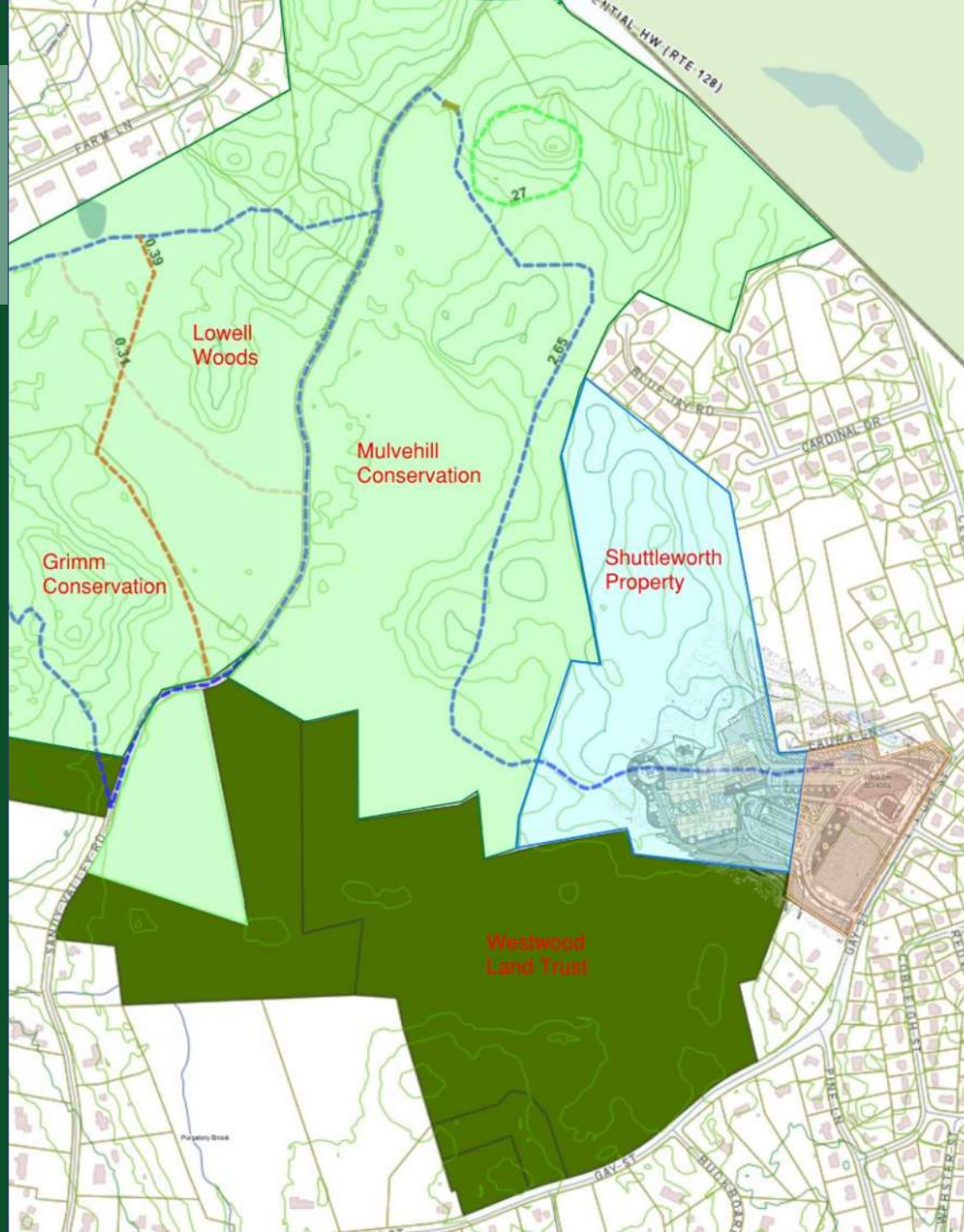
Considerations:

- No parent drop off loop
- Bus loop is very short
- Cars backing out into traffic on Gay St
- Room for expansion: 37.5 acres of land to the west of school

Community Context



Community Context



Design Approach



*A school in
the woods,
through the
eyes of a
child*



Site Plan



Site – Inspirational Imagery



Education as Playful Learning Outdoor Learning Areas



Stump/Gathering Area

- 3 Outdoor learning areas
- Mix of group gathering + cave spaces
- Different content focus (e.g. weather) at each area
- Chalk board/display

Learning Walk

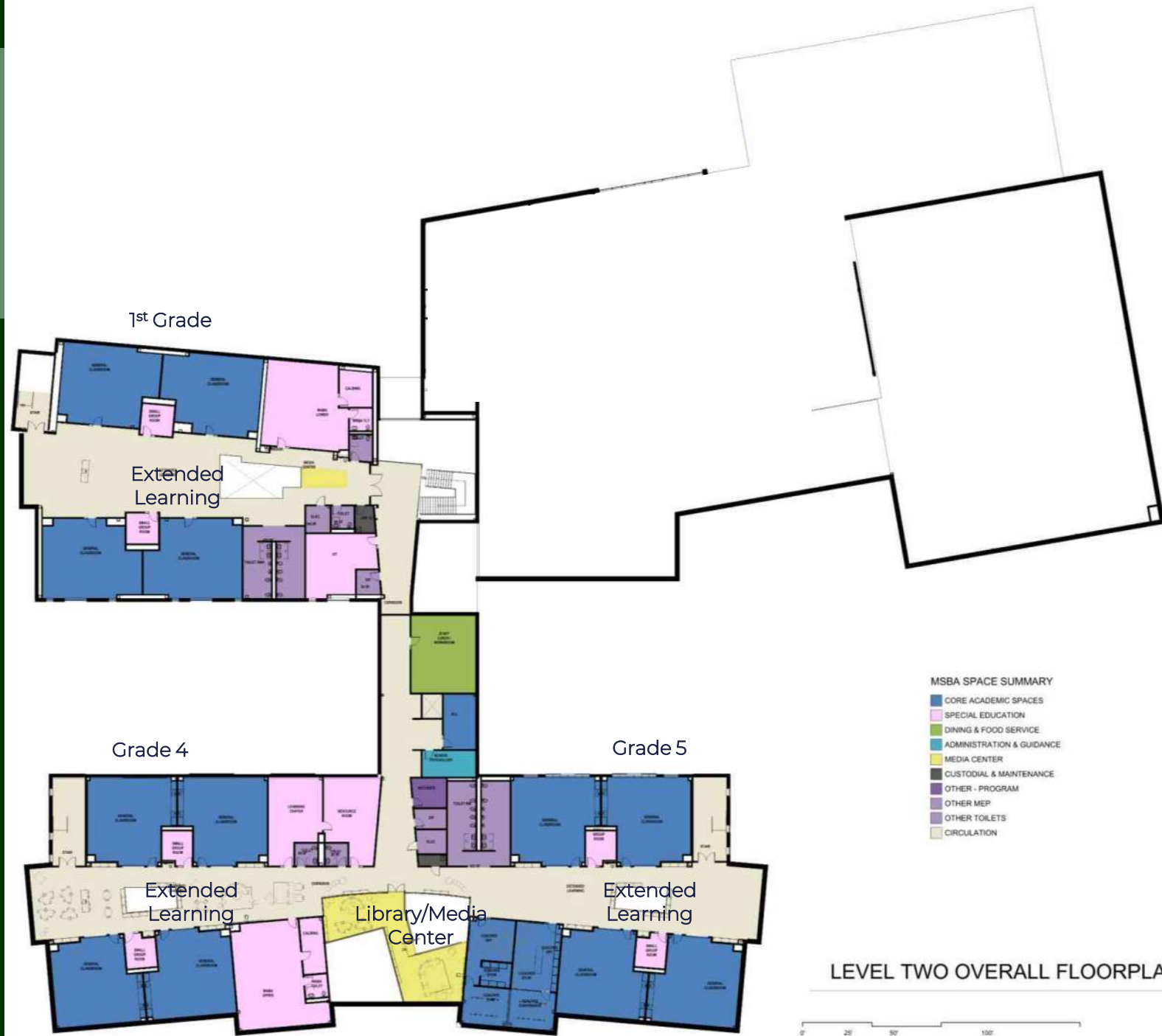
- Sensory discovery (smells, sights, etc.)
- Connects outdoor learning
- Signage to support curriculum



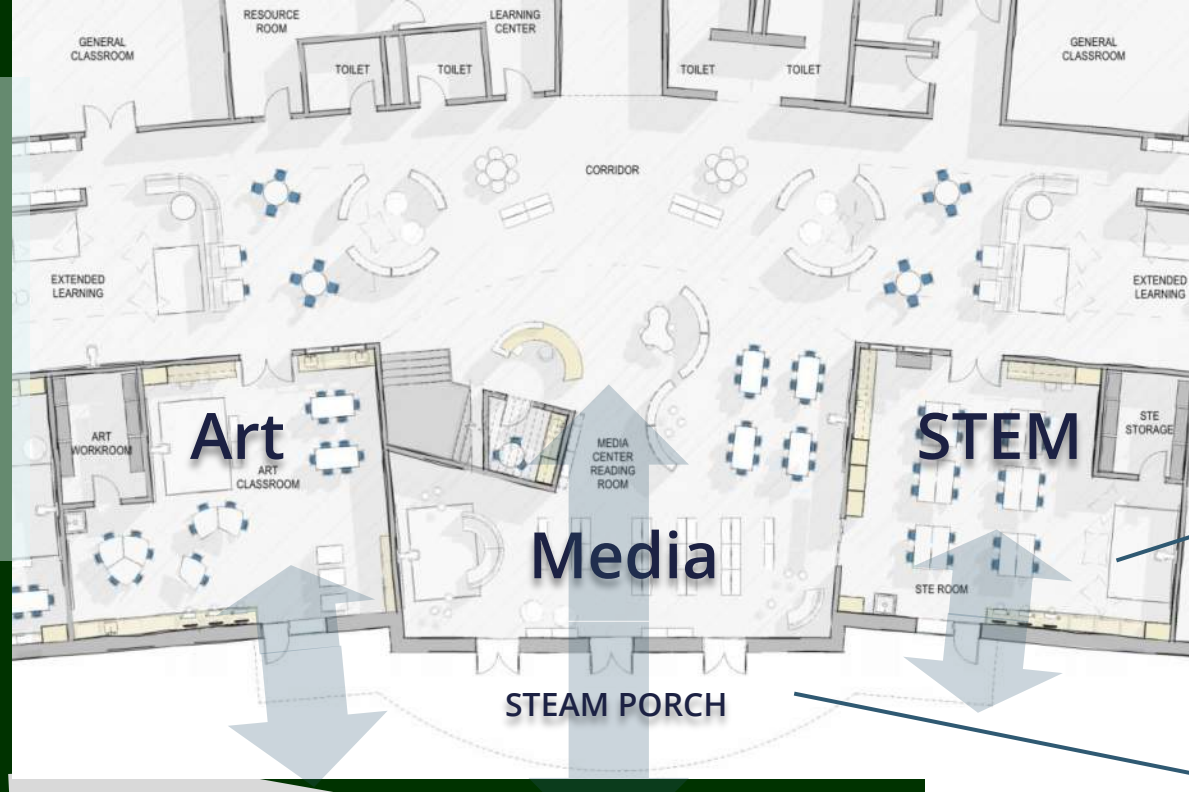
First Floor Plan



Second Floor Plan



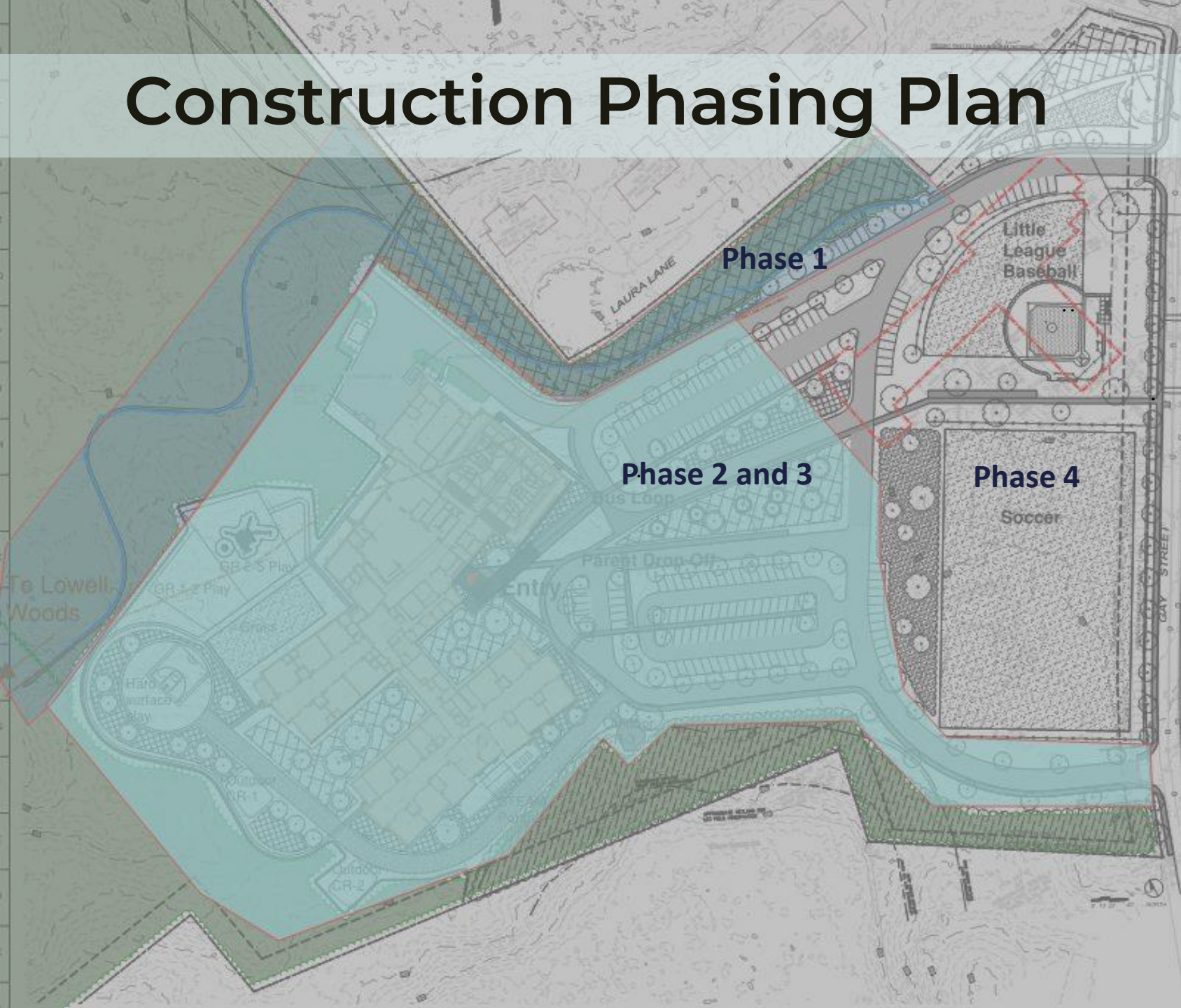
Media Center / STEAM Porch



Wooded Areas



Construction Phasing Plan



Phase 1: spring 2022

Construct fencing- separation from existing school

Construct new trail

Phase 2: spring 2022-fall 2023

Construct new school

Phase 3: fall/winter 2023

Move students into new building

Phase 4: fall/winter 2023

Demolish existing school

Complete remaining fields, landscaping and roads

Existing school remains in continuous operation throughout construction

Sustainability

Net Zero Energy Ready

Fossil Fuel Free

(using geothermal wells for heating and cooling)

High Performance Ventilation System – meeting
COVID response guidelines

Super-insulated thermal envelope

Targeting LEED Silver v. 4

Exterior Materials Palette



Dark Ironspot



Sandstone Rock



Rustik



Pale



Grey Blend



Manganese Ironspot



Natural Rock



Nux



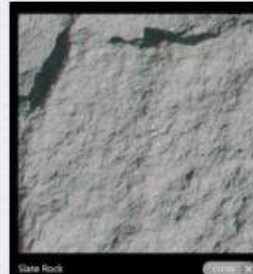
Light Brown



Medium Ironspot 477



Manganese Brown



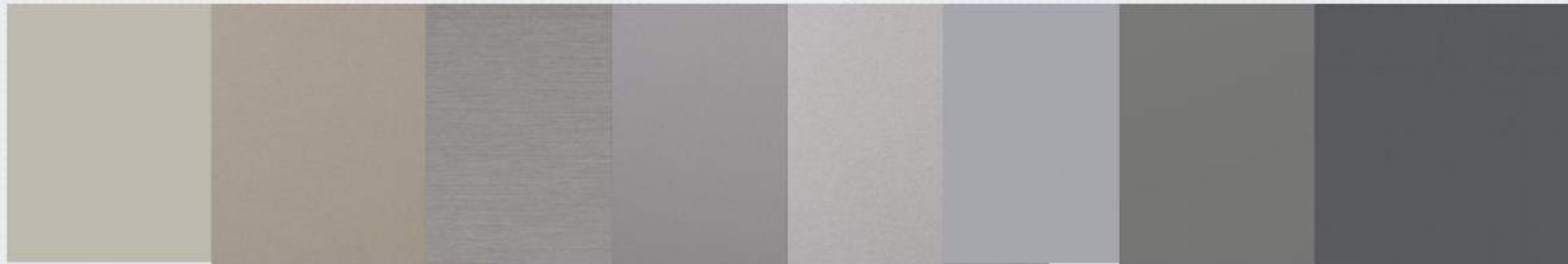
Slate Rock



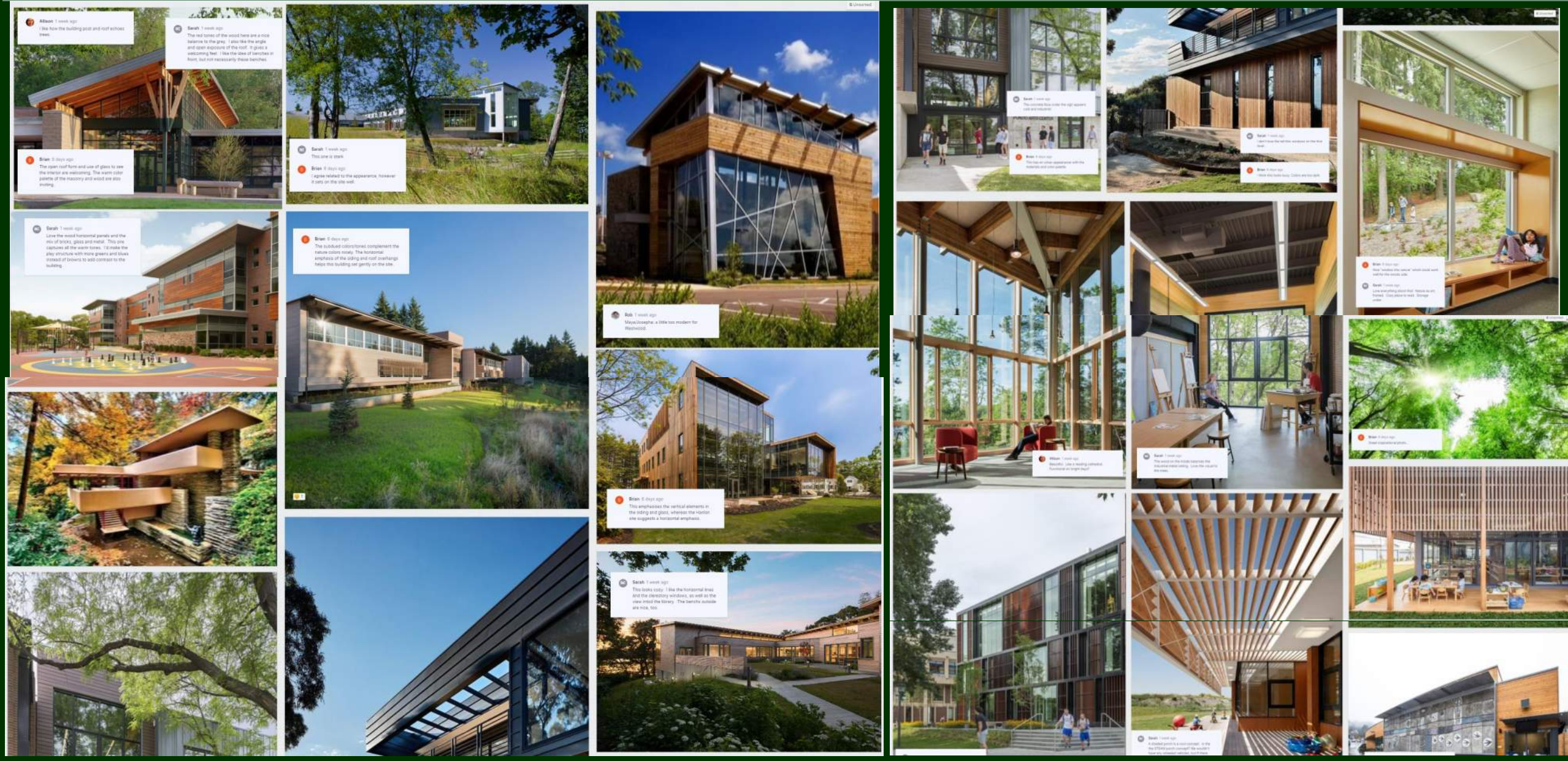
Deep Brown



Dark Brown



Exterior Inspiration Board



3D Model – work in progress



3D Model – work in progress



View from Gay Street at southern entrance

3D Model – work in progress



View from middle of site by Gay Street

3D Model – work in progress



View from Gay Street at northern entrance

3D Model – work in progress



View looking west toward entrance canopy

3D Model – work in progress



View looking northwest from parking

3D Model – work in progress



View of entrance

3D Model – work in progress



View of entrance and gym

3D Model – work in progress



View of southern classroom wing

3D Model – work in progress



View of STEAM porch at southern wing

3D Model – work in progress



View of integrated shading on southern elevation

3D Model – work in progress



Next Steps

October:

Community Presentation

November:

Submit Schematic Design Package for Cost Estimates

December:

Receive cost estimates

SBC vote on Submission to MSBA

Spring 2021:

Town Meeting – Ballot Vote

Public Participation

We want your input on the
design of your new school

www.tinyurl.com/oct13forum

Questions Comments

