

Bullying Prevention Update

Westwood School Committee Meeting
March 10, 2022

Overview

Recent History: Impact of [MGL c.71, § 37O](#)

Technical Response and...

Current Curriculum and Programs

New and Not-So-New Challenges

Next Steps for WPS

MADESE Focus on Prevention

Defines bullying and cyberbullying

Expands school *responsibility* for intervention

Outlines procedures for *responding* to reports

Creates requirement for a District *prevention* plan

- Restorative Practices
- Community Partnerships and Learning Opportunities

It is All Connected...

Technical Response (letters/investigation/documentation)

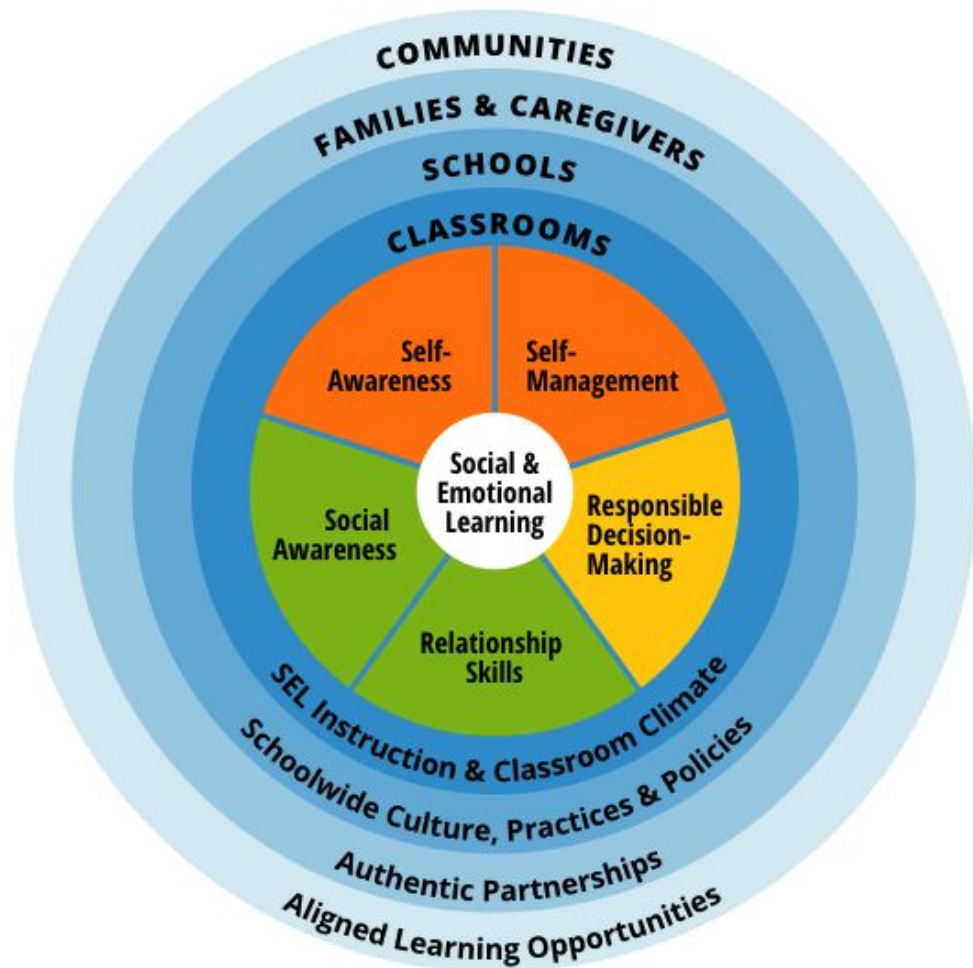
Healthy and Supported School Community

Curriculum

Formal - Pre-K - 12 content/context

Informal - school climate and culture building

Goal: More Prevention Means Less Reactive Response



Current Curriculum and Programs: K - 5

Curriculum:

- Anti-Bullying Lessons in Morning Meeting
- SEL Across the Curriculum
- Same & Different

Programs:

- Body Safety Theatre

CLEAR & Acceptable Use Policy



Current Curriculum and Programs: 6 - 8

- Advisory
 - Developmental Design/Responsive Classroom
 - 20 Minutes Daily
- Bullying Prevention Theater
 - Westwood Youth and Families Partnership
- Anti-Defamation League
 - Peer Leaders
- Recess
- Clear and Acceptable Use Training

Activity - October 18th

We tend to use these words interchangeably, but they actually have different, distinct meanings.

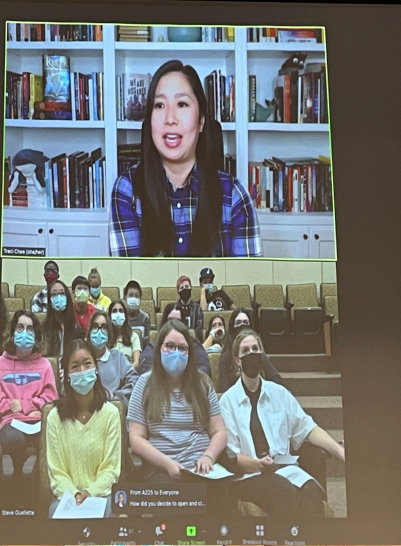
BULLYING	MEAN
RUDE	DRAMA

1. Divide class into 4 groups.
2. Each group has a different word to define on a Mega Post-It Note.
3. Make a brainstorm list, working definition, and examples.
4. Share your ideas.



Current Curriculum and Programs: WHS

- Curriculum:
 - 9th & 10th Grade Seminar
 - 9th & 10th Grade Wellness
 - “Signs of Suicide” Suicide Prevention (9th, 12th)
 - 9-12 Content Area Instruction
- Programs:
 - Westwood Ambassadors and Freshman Orientation
 - S-Block Programs
 - Class meetings
 - WHS StressLess
 - Schoolwide assemblies
 - One School, One Book



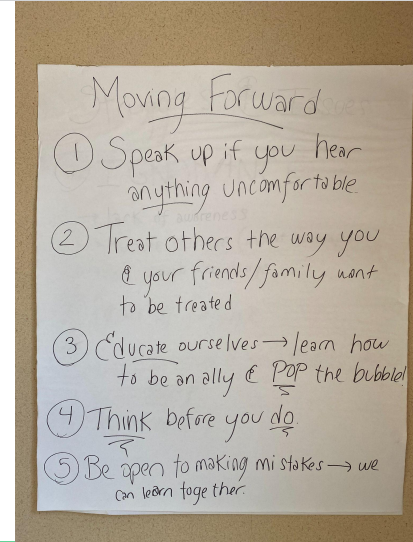
SOS Signs of Suicide teaches STUDENTS TO ACT

SOS is an evidence-based suicide prevention program that educates students about the relationship between suicide and depression, and teaches them how to get help for themselves or a friend. SOS uses the ACT message to equip teens with knowledge and encourage help-seeking so students get the support they need before they reach a potential crisis.

Acknowledge that you are seeing signs of depression or suicide in yourself or a friend.

Care: Let your friend know you care about them.

Tell a trusted adult – take your friend with you or go alone if you need to.



Developmental Work

Developing Social and Emotional Skills

Understanding yourself
Interacting with others
Relationship Building
Responsible Decision Making

Pandemic impacts

Social isolation - limited time to develop critical skill
Long term stress/fatigue
Parental anxiety

Social media

More dominant mode of interaction
Not a good tool for navigating conflict





The Work Ahead

Importance of SEL

Connection to DEI work

Professional Development for teachers

Support for parents

