

Superintendent's Report  
**Westwood School Committee**  
*September 14, 2023*



# — Superintendent's Report

**01** Introduction of Student Services Director and Thurston MS Dean

**02** Summer Programming and School Opening

**03** School Start Times Update

**04** Entry Plan Update

Erin Banty

Thurston MS  
Dean



# School Opening

\_\_\_\_\_ Fall 2023





# New WPS Educators

Welcome & Orientation 2023: Hale Education, technology training, goal setting, etc.

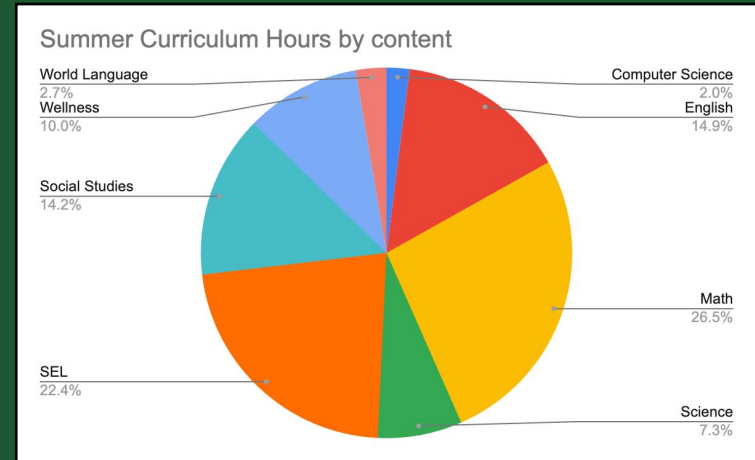


*"I really enjoyed meeting and learning from the other educators. Our activities at Hale made me feel a greater sense of community."*

# Summer Curriculum Work Highlights

22 projects, 79 educators, 599 hours:

- High school electives (math, ELA)
- Wellness mapping
- Social studies new course sequence
- Math new TMS program
- New units, data analysis in Science
- SEL new PreK – 5 program resources
- Grammar program TMS ELA
- Gearing up for World Lang review
- AI













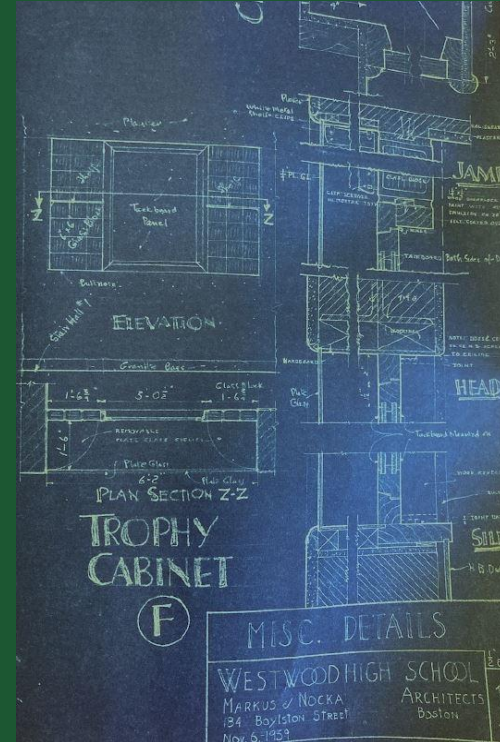




# Capital Projects Update Summer 2023



# Architectural & Engineering Plans



# HVAC Feed Tank (Sheehan)





# Rooftop HVAC Units (TMS)



# Library Furniture & Carpeting (HS)



# Safety: Fire Panels (MJ, Downey) & Blue Lights (TMS)





# Voice over IP Phones (Downey)



# Auditorium Lighting – Stage (HS)



70 Stage Lights Replaced  
with LED (dim / color)

House Lights and Wiring  
(50% done in-house and  
others in Summer 2024)

Dimming System (Summer  
2024)

170/400K spent down



# Network Upgrade: 5 (+1) Buildings

---



Wireless Access Points Installed

Network switches delayed

Installation schedule being developed to minimize disruption

# 2023–2024 Strategic Priorities

---

Objectives	2023-2024 Priorities
<b>1. Meaningful Learning Experiences</b>	<p>1.1 Provide students frequent opportunities for input, choice, leadership and engagement with real-world challenges.</p> <p>1.2 Continue the use of ongoing assessment data and looking at student work to target instruction to what each student needs.</p> <p>1.3 Provide opportunities to develop social emotional skills with a greater focus on cultural competency and perspective-taking.</p> <p>1.4 Investigate the impact of artificial intelligence on the work of students and teachers, and provide policy and/or instructional recommendations about its educational use.</p>
<b>2. Coherent, Connected Curriculum</b>	<p>2.1 Revise and map math curriculum and course pathways PreK-12 in accordance with the review recommendations.</p> <p>2.2 Implement recommendations from the Wellness Review.</p> <p>2.3 Complete the Library and Digital Literacy/Computer Science curriculum review, to provide a vision that aligns the work of both departments.</p> <p>2.4 Initiate the curriculum review process for World Languages.</p>
<b>3. Healthy and Supported School Community</b>	<p>3.1 Continue to honor diversity, promote integration and pursue equity by implementing, monitoring, and evaluating the five priority recommendations identified in the equity audit.</p> <p>3.2 Provide training, communication and support needed to implement restorative practices.</p> <p>3.3 Prepare for the transition to a new IEP that is more student and family centered.</p> <p>3.4 Continue to respond to student mental health needs, and engage community partners in providing short and long term support</p>
<b>4. Infrastructure for the Future</b>	<p>4.1 Develop a long-term capital plan for the District and engage the community in the planning process.</p> <p>4.2 Develop stronger data systems for monitoring student achievement and growth, student behaviors, and talent recruitment and retention to promote equitable outcomes.</p> <p>4.3 Continue to engage in self-study and external audit processes to promote equitable access and outcomes for all students and ensure that district policies and practices align with state and federal laws.</p>

# School Start Times Update

# Superintendent's Entry Plan



# Key Questions

- What are the strengths of our school system?
- What are the biggest challenges that we face?
- What is important that we protect (or maintain) in our system?
- What are our biggest opportunities for growth in the future?



# Meet-and-Greet

- Monday, September 18
  - 8:00–10:00am, Muffin House, 296 Washington St, Westwood
- Tuesday, September 26
  - 6:00–8:00pm, METCO, Inc., 11 Roxbury St, Boston
- Tuesday, October 3
  - 2:00–4:00pm, Westwood Public Library, 660 High St, Westwood
- Wednesday, October 4
  - 6:30–8:30pm, via Zoom, <https://tinyurl.com/WPSSuptOct4>

