

# District Bulletin



*Information contained in this bulletin has been approved by the Office of the Superintendent for distribution on email listservs as a service to community organizations.*

If you wish to have something posted in this bulletin, please contact John Cianciarulo at [jcianciarulo@westwood.k12.ma.us](mailto:jcianciarulo@westwood.k12.ma.us). Note: Recreation, School, Scouting, Town Hall, and Westwood Sports flyers will be posted a maximum of three times. Flyers from businesses, churches, or outside groups will be posted once.

**14**

**WEDNESDAY, NOV. 14**

**Early release day**

**16**

**FRIDAY, NOV. 16**

**Gr. 6 Play: "Myths at the Edge of the World," 7pm, High School Auditorium**

**17**

**SATURDAY, NOV. 17**

**Gr. 6 Play: "Myths at the Edge of the World," 2pm, High School Auditorium**



[www.westwood.k12.ma.us](http://www.westwood.k12.ma.us)



**Twitter**

[@westwood\\_ps](#)  
[@PerfArts\\_02090](#)  
[@westwoodhs](#)  
[@whsathletics1](#)  
[@whsvisualarts](#)  
[@deerfield\\_ps](#)  
[@downeschool](#)  
[@hanlonschool\\_ps](#)  
[@marthajones\\_ps](#)  
[@sheehan\\_ps](#)



**Facebook**  
[westwoodschoo](#)



**Instagram**  
[westwood\\_ps](#)  
[westwoodhs](#)

WEDNESDAY

21

NOVEMBER



## THANKSGIVING RECESS DISMISSAL

**Dismissal times for the day before Thanksgiving,  
Wednesday, November 21, 2018 are as follows.  
No lunch will be served.**

High School–10:45am

Middle School–11:10am

Preschool–11:30am

Deerfield School–11:35am

Other Elementary Schools–Noon

***Classes resume for students on Tuesday, November 27.***



# WESTWOOD WIRE



HAVE YOU  
SIGNED  
UP?

## GET ALL THE LATEST NEWS STRAIGHT TO YOUR INBOX!

The Town now offers a monthly newsletter with community information!

[http://www.townhall.westwood.ma.us/towns/westwood\\_wire/default.htm](http://www.townhall.westwood.ma.us/towns/westwood_wire/default.htm)



One of the most difficult challenges for the Superintendent of Schools is deciding whether or not to cancel or delay school due to inclement weather. Like weather forecasting, the school-closing decision process is not a perfect science. However, it is important for families to understand how the process works. This FAQ document was designed to answer such questions.

### Who makes the decision about whether or not to close school?

The Superintendent of Schools, in consultation with the Director of Operations, Westwood's Department of Public Works, the Highway Department, and Westwood Police officials, make the final decision by 5:45am or earlier. If made later, parents have little time to make arrangements for childcare, and some school district staff may have already left for work.

### What information is gathered to aid in the decision?

There are multiple factors used in deciding whether or not to close school: information on road conditions, snow accumulation predictions, building conditions such as electricity and heat, parking lot conditions, air temperature and wind chill, and estimated times from the Department of Public Works as to when parking lots, roads, and walkways will be cleared of snow and ice.

### How is the information acquired?

District staff monitors state and local weather forecasts. The Department of Public Works and Westwood Police officials provide updates on neighborhood road conditions.

### What are parents' responsibilities?

The safety of your child is paramount. On days when weather conditions are questionable, but school remains open, parents are free to exercise discretion and keep children home from school. Parents of young drivers are asked to reinforce winter weather driving skills: allowing extra travel time, reducing speed, and not worrying about being late.

### How are days made-up?

As per State regulations, students must attend school for a minimum of 180 days and the school year must end by June 30. If school is closed due to weather, the day will be made-up at the end of the school year.

# SNOW DAY FAQ



### How do power outages affect the decision?

Inclement weather can affect the timeline for utility companies to restore electricity. If all school buildings have electricity, the goal will be to open school. Other factors also influence the decision, including whether a number of neighborhoods are without power.

### What is a delayed opening?

Rather than close school for a whole day due to short-term weather situations, there may be days when the beginning of school will be delayed one hour, ninety minutes, or two hours. **School will simply start later by the length of the delay.** Bus pickup, therefore, will also occur later. For example, if your child is normally picked up at 8:35am, during a one hour delayed opening he/she will be picked up at 9:35am. Lunch will still be available and dismissal will be at the regularly scheduled times.

### How is the public notified?

District website ([www.westwood.k12.ma.us](http://www.westwood.k12.ma.us)), Twitter (@[@westwood\\_ps](https://twitter.com/westwood_ps)), and Facebook ([fb.com/westwoodschoools](https://fb.com/westwoodschoools))

School Messenger email

School Messenger phone call ("robo-call"): If the timing is appropriate, a telephone call may be made to families.

Local Television: [WBZ-Ch. 4](#), [WCVB-Ch. 5](#), [WHDH-Ch. 7](#), [WFXT-Ch. 25](#), and [NECN/NBC10 Boston](#).

*Waiting for television broadcasts is often the least effective means of learning about school closings. It is recommended that you first rely on the resources above. Each station also posts school closings on its website.*





**WESTWOOD GIRLS YOUTH  
LACROSSE**

**Spring 2019 Registration  
October 15 - December 15**

Westwood Girls Youth Lacrosse league is a recreational league consisting of youth girls in the Grades 3-8. Our Objectives are to honor the game by exemplifying the value, integrity, trust and competition.

---

WGYL is an instructional girls lacrosse league where each team is organized by grade in school ( 3rd/4th, 5th/6th and 7th/8th).

---

Teams are balanced at each level. We emphasize skill building, teamwork, healthy competition and fun. We aim to give equal playing time for all players.

---

Adheres to a Zero Tolerance policy for misconduct of players, coaches and spectators

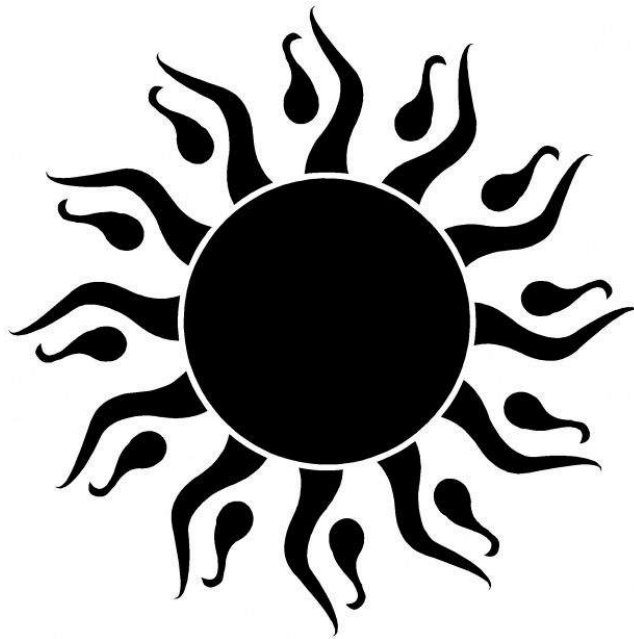


**Westwood Girls Youth Lacrosse**

Register at: [www.westwoodgirlslacrosse.org](http://www.westwoodgirlslacrosse.org)  
Questions: [westwoodgirlslacrosse@gmail.com](mailto:westwoodgirlslacrosse@gmail.com)

\*Thurston Middle School Presents\*

# Myths at the Edge of the World



Westwood High School Auditorium  
Friday November 16<sup>th</sup> at 7pm  
Saturday November 17<sup>th</sup> at 2pm

\$10 Adults     \$7 Students/Senior Citizens

Tickets can be purchased at the door or online at:  
[myths.brownpapertickets.com](http://myths.brownpapertickets.com)



# WHAT'S NEW

from



Take a look at these recent programs available on Westwood Media Center's YouTube page and airing this week on our local Cable Channels!

Judge Baker Children's Center Speaker Series  
"Limit Setting in the Age of Technology" 11/8/18

Friday, November 16 at 4:00 pm  
Comcast 8 and Verizon 32

**YouTube:** [https://youtu.be/tchecUCKi\\_M](https://youtu.be/tchecUCKi_M)

"Teaching Our Children to be Good Digital Citizens"  
with Dr. Elizabeth Englander 10/30/18

Saturday, November 17 at 12:00 pm  
Comcast 8 and Verizon 32

Westwood Boys Varsity Soccer vs Medfield  
"Round 1 Playoffs" 11/4/18

Sunday, November 18 at 6:00 pm  
Comcast 8 and Verizon 32

**YouTube:** [https://youtu.be/\\_KZ4Lru0Dco](https://youtu.be/_KZ4Lru0Dco)

[www.westwoodmediacenter.tv](http://www.westwoodmediacenter.tv)

# BAKE SALE

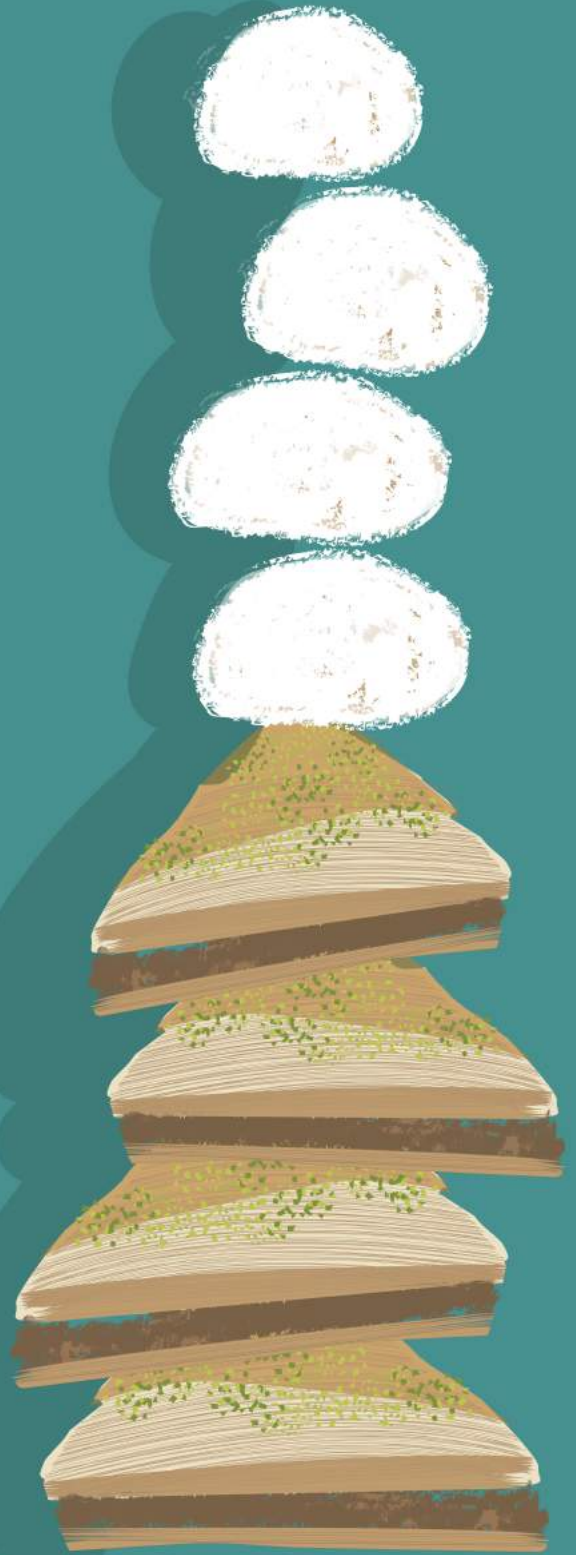
November  
17 and 18

12-3pm

Homemade Greek  
specialties & more

St. Mark of Ephesus  
Orthodox Cathedral  
340 Clapboardtree Street  
Westwood, MA

"Sponsored by St. Philothei Philoptochos"







St. John's Nursery School  
w e s t w o o d

# OPEN HOUSE

for FALL 2019

Saturday, November 17th

9:30-11:00am

**95 DEERFIELD AVENUE - WESTWOOD**

781-329-2032

[www.stjohnsnursery.org](http://www.stjohnsnursery.org)



# **WESTWOOD BASKETBALL WEBSTORE**



**Adult & Youth  
Sizes Available**

**STORE CLOSSES NOV. 19th**



**[ptsteam.com/teams](http://ptsteam.com/teams)**

**Username: Westwood**

**Password: Basketball**



# Martha Jones PTO

## *Benefit Night*

November 20th, 2018 4:30-8:00pm

# BAMBOO

FINE ASIAN CUISINE & SUSHI

---

55 Ariadne Road  
Dedham, MA  
781-251-2566

For Menu and Directions visit:  
[www.bamboogourmet.com](http://www.bamboogourmet.com)

Enjoy a wonderful dinner and help  
support the  
Martha Jones Elementary  
School.

Mention this fundraiser and 20% of  
all sales will be donated to the PTO.

\*\*\* Includes Take Out \*\*\*



# THANKS GIVING BOOT CAMP

TO BENEFIT THE  
WESTWOOD  
COMMUNITY CHEST

8AM 11/22 AT THE WHS  
MULTIPURPOSE FIELD  
OR WHS GYM FOR RAIN/ICE

**suggested  
donation  
\$20**

BRING A MAT, WEIGHTS AND  
WATER...AND YOUR  
HOUSEGUESTS AND TEENS,  
TOO!

[www.coreassetfitness.com](http://www.coreassetfitness.com)





# HALE

## Hale's 3<sup>rd</sup> Annual #OptOutside Scavenger Hunt



**On November 23, go on a FREE self-guided adventure with family, friends, and neighbors.**

Start at Trading Post where you'll pick up a map and clues, and enter to **win a Hale Summer Club Staycation Pass** valued at \$530. Then hike to historical sites as you **celebrate Hale's centennial** with activities, prizes, and more. The family route is 2 miles, and the "challenge waypoint" (if you choose to hike to it) is an additional mile.

**RSVP ON HALE'S FACEBOOK PAGE**



## COFFEE WITH DISTRICT ADMINISTRATORS

Please join the District Administrative Team for a coffee on **Thursday, November 29 at 7pm** in the **Sheehan School Library**. This is an opportunity to discuss your perspective on the district and your hopes and expectations for your child's experience in school. The coffee is open to all families in the district.

### DISTRICT ADMINISTRATORS

Emily Parks  
Superintendent of Schools

Allison Borchers  
Assistant Superintendent

Abby Hanscom  
Director of Student Services

Heath Petracca  
Director of Business and Finance

Steve Ouellette  
Director of Technology,  
Learning & Innovation







# Westwood Artists December Marketplace

at the **Fisher School**

830 High Street, Westwood

**Friday and Saturday**

**November 30, 3:30 - 7:00 pm**

**December 1, 10:00 am - 3:00 pm**

Featuring Westwood MA resident artisans -  
ceramicists **Lisa W B Walker & Jane Wojick**,  
jewelry makers **Marilyn Brier & Melanie Guerra**,  
painters **Carol Ahearn & Maureen Obey**,  
calligrapher **Claire Griffin**, fiber artist **Kathy Zola**,  
and photographer **Karen Cagan**.

Yummy Welsh cakes from **Copper Kettle Bakery**  
& chocolate from **Whim Chocolates**.

Thank you to the Westwood Historical Society for hosting us.







## Westwood Youth Soccer Spring 2019 Registration Grades 3-8



Online at [www.westwoodsoccer.org](http://www.westwoodsoccer.org)  
Thursday November 1 - Friday November 30, 2018

Calling all Westwood Youth Soccer Players!

### Grades 3-8

Online registration is OPEN for the Spring 2019 season **from Thursday November 1 through Friday November 30, 2018** at [www.westwoodsoccer.org](http://www.westwoodsoccer.org). Players must be residents of Westwood.

Click through the [Registration](#) link on the left-hand side of the home page at [www.westwoodsoccer.org](http://www.westwoodsoccer.org). The fee for the 10-week Spring 2019 season from early April – mid June 2019 is \$125 per player.

### Grades K-2

K-2 soccer is a FULL-YEAR program, so if a child in Grades K-2 played in the fall season, there is **NO NEED to RE-REGISTER for the spring.**

If a K-2 child DID NOT play in the fall, and wishes to play in the Spring 2019 season, please contact the registrar separately at [registrar@westwoodsoccer.org](mailto:registrar@westwoodsoccer.org).

### Late Fee

**Registrations completed after the 12:00 midnight November 30, 2018 deadline will be considered late and automatically assessed a \$25 per player late fee.**

Late fees cannot be waived. Fee waivers will NOT be granted for late registrations. Late registrants will be placed on a space available basis.

### Financial Hardship Fee Waivers

Requests for a registration fee waiver due to financial hardship **MUST** come within the **OPEN** registration period from **November 1 – November 30**. Fee waivers for late registrations will not be granted.

### We Need Volunteers!

**Please consider volunteering!** Soccer knowledge a plus, but not a requirement. To submit your name to be considered for a Coach, Assistant Coach, or Parent Manager position please select the appropriate volunteer option and complete the volunteer information when you are registering your child during this online registration process.

See [www.westwoodsoccer.org](http://www.westwoodsoccer.org) for additional information.

# WESTWOOD BOYS LACROSSE

12/1 Deadline  
Fast Approaching



HEAD, HEART, HUSTLE

## SPRING SEASON

**Register NOW**

Timely registration ensures our volunteers have the time for planning and coach recruiting necessary to deliver a superior player experience!

[WestwoodYouthLacrosse.com](http://WestwoodYouthLacrosse.com)

Grades  
1 - 8



# A WESTWOOD COMMUNITY BASKETBALL CELEBRATION



MEET THE PLAYERS



# WESTWOOD HOOPS TIP-OFF



RAFFLES



COMPETITIONS



PRIZES



SATURDAY, DECEMBER 1ST  
WESTWOOD HS GYM - 7:00PM



## WESTWOOD COUNCIL ON AGING BASKET FUNDRAISER

The Friends of the Westwood Council on Aging is hosting its 3<sup>rd</sup> Annual Basket Fundraiser. This is our one and only fundraiser and 100% of all proceeds go towards programs and outreach for seniors in our community.

Tickets are \$1 each or \$10 for 12 tickets; drawing will be held at our Holiday Party in December (you do not need to be present to win – you write your name and phone number on the ticket and we will contact you if you win). Attached you will find a description of the 19 baskets that were generously donated to us. Tickets are available daily here at the Center, Monday through Thursday, 8-4 and Fridays 8-12.

I hope you will consider stopping by and help us help our senior community.

Please pass this on to your friends. Thanks in advance.

Warmly,

*Lina Arena-DeRosa*

*Director  
Westwood Council on Aging  
60 Nahatan Street  
Westwood MA 02090  
781-329-8799*

# **WESTWOOD SENIOR CENTER**

## **2018 HOLIDAY RAFFLE**

**\$1 PER TICKET OR \$10 FOR 12 TICKETS**

1. "Afternoon Tea" \$50 Gift Cards to "Fancy That", "Bibi Bakery" and "Dessert Works", Wedgwood Bone China Tea Set, Tea Strainer, Tea bags, Recipe Book, Cookies, Scone & Bread Mixes & Champagne!  
Donated by: Conlin Health Care, Inc. Total Value: \$250
2. "Scentsational!!" Candles, Candle holders, Plug-in, Spray Scents, Wick Trimmer, Lighters.  
Donated by: Folsom Funeral Services Total Value: \$250
3. "Party In A Basket" (Just Add Champagne) Basket, 6 Champagne Glasses, 30 Large Plates & Napkins, 45 Dessert Plates & Napkins, 20 Champagne Flutes, 70 Cups, Cutlery, Round & Square Tablecloths, Balloons, Tissue Balls, Fans, Dangles, Bead Necklaces.  
Donated by: 2Sisters Senior Living Advisors Total Value: \$250
4. "Spa Day!" \$100 Massage Envy Gift Card, iHome Zenergy Candle, Ultra Plush Robe & Slippers, Herbal Elements Room & Body Mist, Scented Soaps, Foot Brush & Pumice, Sponges and St. Ives Sheet Masks.  
Donated by: Cornerstone at Canton Total Value: \$250
5. "Cold Cash" \$250 of cold hard cash for you to enjoy any way you like!!!  
Donated by: Blue Cross Blue Shield Massachusetts Total Value: \$250
6. "Box O'Green" A second chance at \$250 cash for you to enjoy any way you like!!!  
Donated by: Out of the Box Moves Total Value: \$250
7. "Do you Feel Lucky?" \$250 of Scratch Cards and a dime for Scratching!  
Donated by: Samuel, Sayward & Baler, LLC Total Value: ????
8. "What's for Dinner?" \$250 Gift Card to Roche Bros. with a recipe holder.  
Donated by: Roche Bros. Total Value: \$250
9. "Stonewall Breakfast" \$50 Big Y Gift Card, Waffle Maker, 2 each of the following: Farmhouse Pancake and Waffle Mixes - Regular & Organic; Syrups - Wild Maine Blueberry, Maine Maple, Raspberry; Jams - Red Raspberry, Wild Maine Blueberry, Peach Apricot & Strawberry.  
Donated by: Big Y Total Value: \$250
10. "Italian Night" \$200 Wegmans Gift Card, Pasta, Sauce, Balsamic Vinegar, Olive Oil, Dipping Oil, Towels, Pasta, Bruschette Toasts.  
Donated by: Wegmans Total Value: \$250

11. **“All Things Pumpkin” Select William Sonoma items, Pumpkin Cake Pan, Pumpkin Spice Hot Chocolate, Pumpkin Cinnamon Quick Bread, Maple Syrup, Waffle Mix, Apron, Oven Mitt, Pot Holder, Spatulas, Pumpkin Candle, Mulling Spices, Spiced Pumpkin Pecan Chocolate Bark.**  
Donated by: **Beacon Communities, Highland Glen** Total Value: **\$250**
12. **“Italian Inspirations” 2 Bottles of Harry & David Vineyards Wine; Harry & David Gift Basket: Angel Hair Garlic Pasta, Olive Oil, Flatbread Mix, Bruschetta Spread, Artichoke Hearts, Four-cheese Risotto, Roasted Vegetables, Salami, Pasta Sauce, Crackers, Dipping Sauce, Ceramic Dipping Bowls, Towel.**  
Donated by: **Ellis Residential & Rehabilitation** Total Value: **\$250**
13. **“Save your Winnings!!” 2 Bottles of Wine, \$200 of Scratch Tickets and more!**  
Donated by: **Rockland Trust, Westwood** Total Value: **\$250**
14. **“Get Lucky - Get Happy!!” \$100 of Scratch Cards, 3 Bottles of Wine, Water Bottle, Canvas Tote Bag, Pens, Note Pads, Treats.**  
Donated by: **Benchmark Senior Living** Total Value: **\$250**
15. **“Holiday Shopping at University Station!!” Includes 2 \$25 Gift Cards to Target and 1 \$25 Gift Card to each of the following: Anthony’s Coal Fired Pizza, Marshalls, HomeGoods, Panera, Wegmans, Nordstrom, PetSmart, Home Sense.**  
Donated by: **Visiting Angels** Total Value: **\$250**
16. **“Snowed In” Scratch Tickets, Adult Coloring Books, Colored Pencils, Candle, Craft Foam Magnets, Glue, Paint by Numbers, Puzzles, Puzzle Books, Pens, Flashlights Batteries, Pictionary, Hot Chocolate, Mugs, Marshmallows, Napkins, Mints, Hand Cream, Sunblock, ChapSticks.**  
Donated by: **Dedham Savings Bank** Total Value: **\$250**
17. **“Dine, Wine & Spirits!” 2-\$70 Chiara Gift Cards, Echo Bay New Zealand Sauvignon Blanc, Fleurs de Prairie Provence Rose, Petit Manou Medoc Read Bordeaux, Jack Daniels Old #7 Black Label Whiskey, Prairie Organic Cucumber Vodka.**  
Donated by: **Chiara** Total Value: **\$250**
18. **“Dinning Out” \$50 Gift Cards to Byblo’s, Comella’s, Conrad’s, Taso’s & The Toast Office.**  
Donated by: **Highland Glen II & National Development** Total Value: **\$250**
19. **“Last But Not Least - From the Center” 3 Months of Waxing with Lisa at the Center, 1 Free Day Trip with Trish, 1 Free Fox Tour Day Trip, First in line for One Center Party of your Choice for 2 People.**  
Donated by: **Westwood Council on Aging** Total Value: **Priceless**





# Pilates Night Out

Wed 11/14 7:30pm

Come for our Mat Pilates class

Stay for:

FitVine Wine Tasting

Beauty Counter pop-up

Massages by Victoria Krutan

\$18 drop-in or use your class pack

Core Asset Fitness Training

40 Hartford St.

Westwood MA

[info@coreassetfitness.com](mailto:info@coreassetfitness.com)

[www.coreassetfitness.com/classes](http://www.coreassetfitness.com/classes)